

UK Office

Everest Biotech Ltd

Cherwell Innovation Centre
77 Heyford Park
Upper Heyford
Oxfordshire
OX25 5HD
UK

Enquiries:

info@everestbiotech.com

Sales:

sales@everestbiotech.com

Tech support:

support@everestbiotech.com

Tel: +44 (0)1869 238326

www.everestbiotech.com

**Research Use Only. Not for
diagnostic or therapeutic use.**

EB07126 - Goat Anti-DEAD-box protein 6 Antibody

Size: 100µg specific antibody in 200µl

Target Protein

Principal Names: DEAD-box protein 6, DEAD (Asp-Glu-Ala-Asp) box polypeptide 6, DDX6, HLR2, P54, RCK, DEAD box-6, DEAD/H (Asp-Glu-Ala-Asp/His) box polypeptide 6 (RNA helicase, 54kD)

Official Symbol: DDX6

Accession Number(s): NP_004388.1

Human GeneID(s): [1656](#)

Immunogen

Peptide with sequence C-AEYHSEPVEDEKP, from the C Terminus of the protein sequence according to NP_004388.1.

Please note the [peptide](#) is available for sale.

Purification and Storage

Purified from goat serum by ammonium sulphate precipitation followed by antigen affinity chromatography using the immunizing peptide.

Supplied at 0.5 mg/ml in Tris saline, 0.02% sodium azide, pH7.3 with 0.5% bovine serum albumin.

Aliquot and store at -20°C. Minimize freezing and thawing.

Applications Tested

Peptide ELISA: antibody detection limit dilution 1:128000.

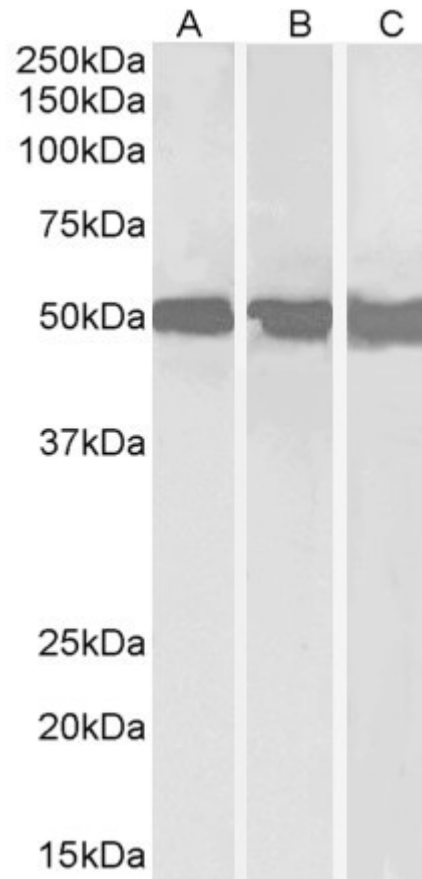
Western blot: Approx 50kDa band observed in lysates of cell lines Daudi, Jurkat and HepG2 (calculated MW of 53.2kDa according to NP_004388.1). Recommended concentration: 0.3-1µg/ml. Primary incubation was 1 hour.

IHC: Paraffin embedded Human Brain (Cortex) and Thymus. Recommended concentration: 5µg/ml.

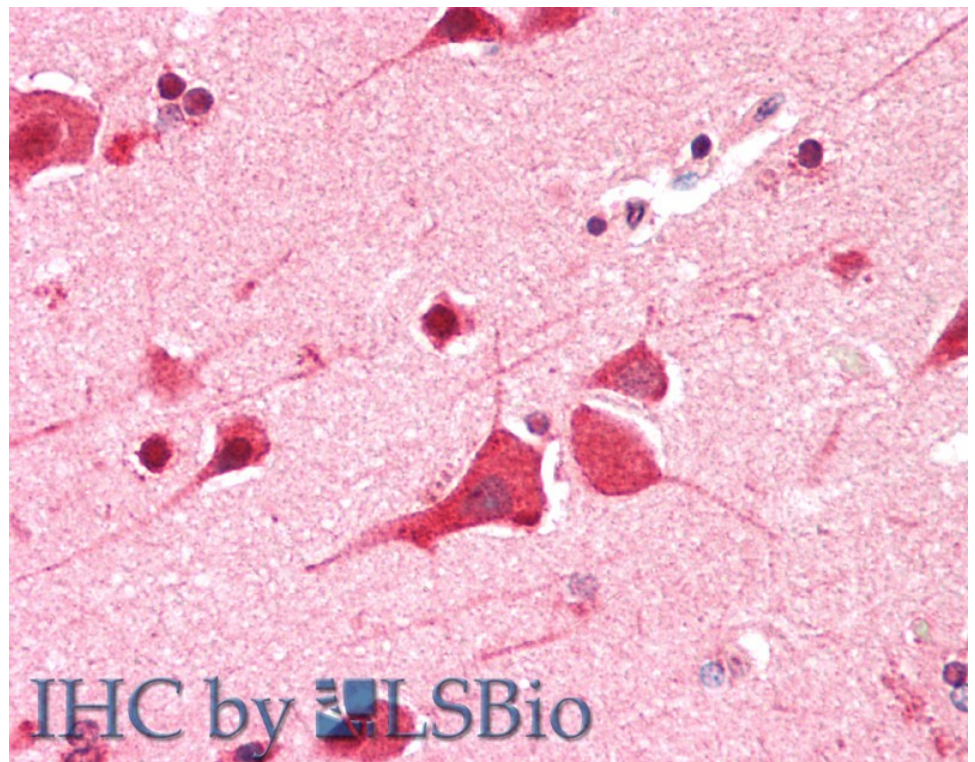
Species Reactivity

Tested: Human

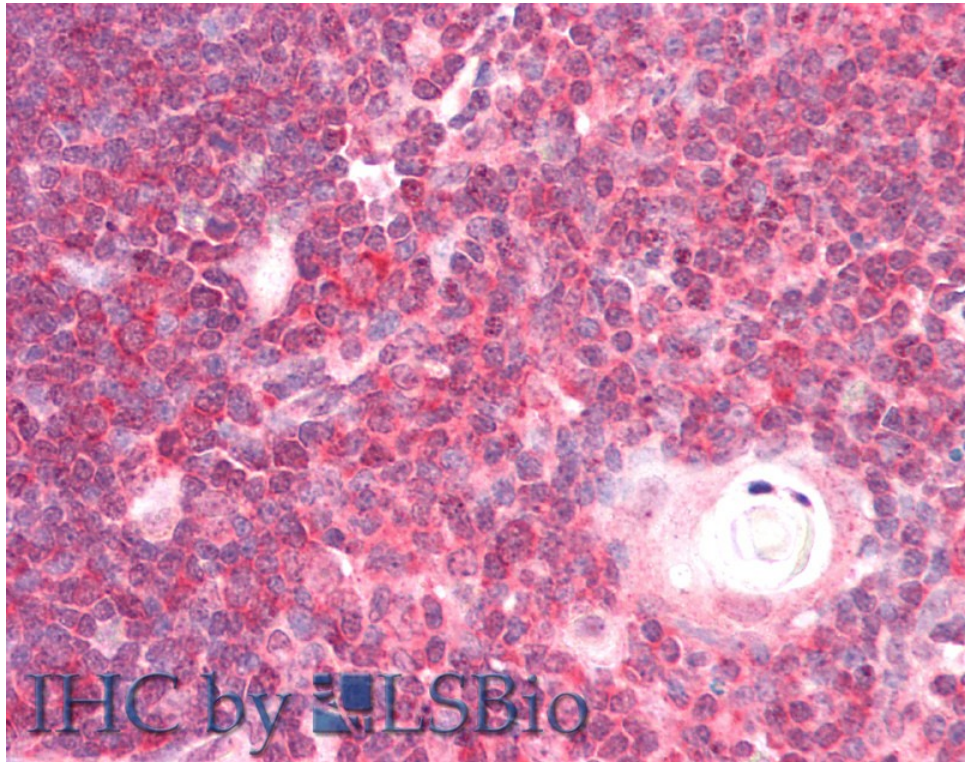
Expected from sequence similarity: Human, Mouse, Rat, Dog



EB07126 (0.3 μ g/ml) staining of Daudi (A), Jurkat (B) and HepG2 (C) lysates (35 μ g protein in RIPA buffer).
Detected by chemiluminescence.



EB07126 (5 μ g/ml) staining of paraffin embedded Human Cortex. Steamed antigen retrieval with citrate buffer pH 6, AP-staining.



EB07126 (5 μ g/ml) staining of paraffin embedded Human Thymus. Steamed antigen retrieval with citrate buffer pH 6, AP-staining.