



## UK Office

### Everest Biotech Ltd

Cherwell Innovation Centre  
77 Heyford Park  
Upper Heyford  
Oxfordshire  
OX25 5HD  
UK

Enquiries:

[info@everestbiotech.com](mailto:info@everestbiotech.com)

Sales:

[sales@everestbiotech.com](mailto:sales@everestbiotech.com)

Tech support:

[support@everestbiotech.com](mailto:support@everestbiotech.com)

Tel: +44 (0)1869 238326

[www.everestbiotech.com](http://www.everestbiotech.com)

**Research Use Only. Not for  
diagnostic or therapeutic use.**

## EB09586 - Goat Anti-Desmoglein 1 / DSG1 Antibody

Size: 100µg specific antibody in 200µl



### Target Protein

**Principal Names:** DSG1, desmoglein 1, CDHF4, DG1, DSG, desmosomal glycoprotein 1, pemphigus foliaceus antigen

**Official Symbol:** DSG1

**Accession Number(s):** NP\_001933.2

**Human GeneID(s):** [1828](#)

### Immunogen

Peptide with sequence C-YTTSDTLKPSVHVHD, from the internal region of the protein sequence according to NP\_001933.2.

Please note the [peptide](#) is available for sale.

### Purification and Storage

Purified from goat serum by ammonium sulphate precipitation followed by antigen affinity chromatography using the immunizing peptide.

Supplied at 0.5 mg/ml in Tris saline, 0.02% sodium azide, pH7.3 with 0.5% bovine serum albumin.

Aliquot and store at -20°C. Minimize freezing and thawing.

### Applications Tested

**Peptide ELISA:** antibody detection limit dilution 1:32000.

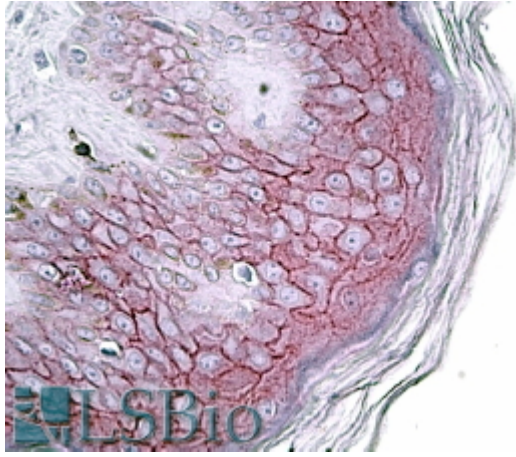
**Western blot:** Preliminary experiments in lysates of cell lines A431, HeLa, K562 and MOLT4 gave no specific signal but low background (at antibody concentration up to 1µg/ml).

**IHC:** In paraffin embedded Human Skin shows staining of the cellular membranes of keratinocytes. Recommended concentration, 4-6µg/ml.

### Species Reactivity

**Tested:** Human

**Expected from sequence similarity:** Human



EB09586 (3.8µg/ml) staining of paraffin embedded Human Skin. Steamed antigen retrieval with citrate buffer pH 6, AP-staining.