



International Office

Everest Biotech Ltd

Vector Laboratories, Inc.
6737 Mowry Ave
Newark, CA 94560
United States

Customer Service:

customerservice@vectorlabs.com

Technical Service:

technical@vectorlabs.com

Tel: +1 (800) 227-6666

www.everestbiotech.com

**Research Use Only. Not for
diagnostic or therapeutic use.**

EB10151 - Goat Anti-Desmoplakin (aa 1672 -1684) Antibody

Size: 100µg specific antibody in 200µl



Target Protein

Principal Names: 250kDa paraneoplastic pemphigus antigen, desmoplakin, desmoplakin I, DPI, DSP

Official Symbol: DSP

Accession Number(s): NP_004406.2

Human GeneID(s): [1832](#)

Non-Human GeneID(s): 109620 (mouse), 306871 (rat)

Important Comments: This antibody is expected to recognize reported isoform I (NP_004406.2) only.

Immunogen

Peptide with sequence C-QESVKQAHLRNEH, from the internal region of the protein sequence according to NP_004406.2.

Please note the [peptide](#) is available for sale.

Purification and Storage

Purified from goat serum by ammonium sulphate precipitation followed by antigen affinity chromatography using the immunizing peptide.

Supplied at 0.5 mg/ml in Tris saline, 0.02% sodium azide, pH7.3 with 0.5% bovine serum albumin.

Aliquot and store at -20°C. Minimize freezing and thawing.

Applications Tested

Peptide ELISA: antibody detection limit dilution 1:4000.

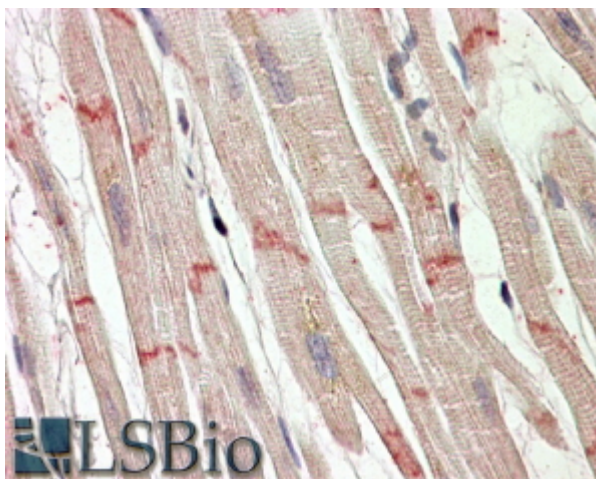
Western blot: Preliminary experiments in lysates of cell lines HEK293, HeLa and NIH3T3 gave no specific signal but low background (at antibody concentration up to 1µg/ml). We would appreciate any feedback from people in the field - have any results been reported with other antibodies/lysates?

IHC: In paraffin embedded Human Heart shows staining of the junctions between cardiomyocellular fibres. Recommended concentration, 3-6µg/ml.

Species Reactivity

Tested: Human

Expected from sequence similarity: Human, Mouse, Rat



EB10151 (3.8µg/ml) staining of paraffin embedded Human Heart. Steamed antigen retrieval with citrate buffer pH 6, AP-staining.