

## International Office

### Everest Biotech Ltd

Vector Laboratories, Inc.  
6737 Mowry Ave  
Newark, CA 94560  
United States

Customer Service:

[customerservice@vectorlabs.com](mailto:customerservice@vectorlabs.com)

Technical Service:

[technical@vectorlabs.com](mailto:technical@vectorlabs.com)

Tel: +1 (800) 227-6666

[www.everestbiotech.com](http://www.everestbiotech.com)

**Research Use Only. Not for  
diagnostic or therapeutic use.**

## EB07661 - Goat Anti-DGAT2 Antibody

Size: 100µg specific antibody in 200µl



### Target Protein

**Principal Names:** DGAT2, diacylglycerol O-acyltransferase homolog 2 (mouse), DKFZp686A15125, HMFN1045, GS1999full, diacylglycerol O-acyltransferase homolog 2, diacylglycerol O-acyltransferase-like protein 2 isoform 1

**Official Symbol:** DGAT2

**Accession Number(s):** NP\_115953.2; NP\_001240820.1

**Human GeneID(s):** [84649](#)

**Non-Human GeneID(s):** 67800 (mouse), 252900 (rat)

**Important Comments:** This antibody is not expected to cross-react with other DGAT members.

### Immunogen

Peptide with sequence C-KLEHPTQQDIDLYH, from the internal region (near the C Terminus) of the protein sequence according to NP\_115953.2; NP\_001240820.1.

Please note the [peptide](#) is available for sale.

### Purification and Storage

Purified from goat serum by ammonium sulphate precipitation followed by antigen affinity chromatography using the immunizing peptide.

Supplied at 0.5 mg/ml in Tris saline, 0.02% sodium azide, pH7.3 with 0.5% bovine serum albumin.

Aliquot and store at -20°C. Minimize freezing and thawing.

### Applications Tested

**Peptide ELISA:** antibody detection limit dilution 1:128000.

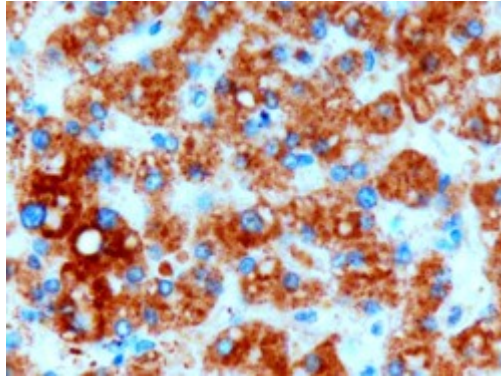
**IHC:** In paraffin embedded Human Liver shows granular cytoplasm staining of hepatocytes. Recommended concentration: 3µg/ml.

**Flow Cytometry:** Flow cytometric analysis of HeLa cells. Recommended concentration: 10ug/ml.

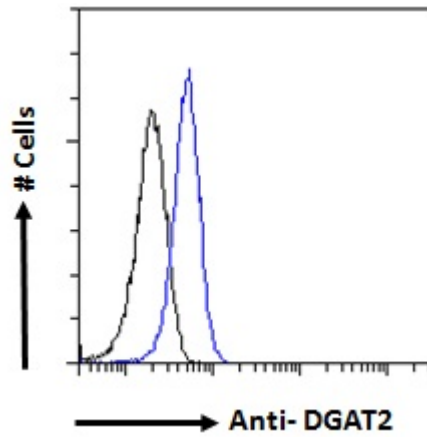
### Species Reactivity

**Tested:** Human

**Expected from sequence similarity:** Human, Mouse, Rat, Dog



EB07661 (3 $\mu$ g/ml) staining of paraffin embedded Human Liver. Microwaved antigen retrieval with Tris/EDTA buffer pH9, HRP-staining.



EB07661 Flow cytometric analysis of paraformaldehyde fixed HeLa cells (blue line), permeabilized with 0.5% Triton. Primary incubation 1hr (10 $\mu$ g/ml) followed by Alexa Fluor 488 secondary antibody (1 $\mu$ g/ml). IgG control: Unimmunized goat IgG (black line) followed by Alexa Fluor 488 secondary antibody.