

## UK Office

### Everest Biotech Ltd

Cherwell Innovation Centre  
77 Heyford Park  
Upper Heyford  
Oxfordshire  
OX25 5HD  
UK

Enquiries:

[info@everestbiotech.com](mailto:info@everestbiotech.com)

Sales:

[sales@everestbiotech.com](mailto:sales@everestbiotech.com)

Tech support:

[support@everestbiotech.com](mailto:support@everestbiotech.com)

Tel: +44 (0)1869 238326

[www.everestbiotech.com](http://www.everestbiotech.com)

**Research Use Only. Not for  
diagnostic or therapeutic use.**

## EB09297 - Goat Anti-DHX9 / RHA Antibody

Size: 100µg specific antibody in 200µl



### Target Protein

**Principal Names:** DHX9, DEAH (Asp-Glu-Ala-His) box polypeptide 9, DDX9, LKP, NDHII, RHA, ATP-dependent RNA helicase A, DEAD/H (Asp-Glu-Ala-Asp/His) box polypeptide 9 (RNA helicase A), DEAD/H (Asp-Glu-Ala-Asp/His) box polypeptide 9 (RNA helicase A, nuclear DNA helicase II, leukophysin), DEAD/H box-9 (nuclear DNA helicase II, RNA helicase A), OTTHUMP00000033287, leukophysin

**Official Symbol:** DHX9

**Accession Number(s):** NP\_001348.2

**Human GeneID(s):** [1660](#)

**Non-Human GeneID(s):** 13211 (mouse), 304859 (rat)

### Immunogen

Peptide with sequence TEGRNALIHKSSVNC, from the internal region of the protein sequence according to NP\_001348.2.

Please note the [peptide](#) is available for sale.

### Purification and Storage

Purified from goat serum by ammonium sulphate precipitation followed by antigen affinity chromatography using the immunizing peptide.

Supplied at 0.5 mg/ml in Tris saline, 0.02% sodium azide, pH7.3 with 0.5% bovine serum albumin.

Aliquot and store at -20°C. Minimize freezing and thawing.

### Applications Tested

**Peptide ELISA:** antibody detection limit dilution 1:16000.

**Western blot:** Approx. 140kDa band observed in nuclear lysates of cell line HeLa (calculated MW of 141kDa according to NP\_001348.2). Recommended concentration: 1-3µg/ml. Primary incubation was 1 hour.

### Species Reactivity

**Tested:** Human

**Expected from sequence similarity:** Human, Mouse, Rat, Cow

### Specific Reference

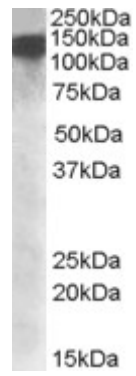
**This antibody has been successfully used in WB:**

Saravana Selvanathan and Jeffrey Toretzky

An EWS::FLI1 monoclonal antibody with multimodal utility and specificity for FLI1.

bioRxiv preprint doi: <https://doi.org/10.1101/2023.11.13.566886>

PMID: 0



EB09297 (1 $\mu$ g/ml) staining of nuclear HeLa lysate (35 $\mu$ g protein in RIPA buffer). Detected by chemiluminescence.