



UK Office

Everest Biotech Ltd

Cherwell Innovation Centre
77 Heyford Park
Upper Heyford
Oxfordshire
OX25 5HD
UK

Enquiries:

info@everestbiotech.com

Sales:

sales@everestbiotech.com

Tech support:

support@everestbiotech.com

Tel: +44 (0)1869 238326

Fax: +44 (0)1869 238327

US Office

Everest Biotech c/o Abcore

405 Maple Street, Suite A106
Ramona,
CA 92065
USA

Inquiries:

info@everestbiotech.com

Sales:

usasales@everestbiotech.com

Tech support:

support@everestbiotech.com

Tel: 888-320-4628 (toll-free)

Fax: 888-841-9041

www.everestbiotech.com

**Research Use Only. Not for
diagnostic or therapeutic use.**

EB07628 - Goat Anti-DIO2 Antibody

Size: 100µg specific antibody in 200µl



Target Protein

Principal Names: DIO2, deiodinase, iodothyronine, type II, 5DII, D2, SelY, TXDI2, thyroxine deiodinase, type II, type 2 iodothyronine deiodinase, type II iodothyronine deiodinaseN: type-II 5\1deiodinase

Official Symbol: DIO2

Accession Number(s): NP_000784.2; NP_054644.1; NP_001007024.1

Human GeneID(s): [1734](#)

Non-Human GeneID(s): 13371 (mouse), 65162 (rat)

Important Comments: This antibody is expected to recognise both reported isoform a (NP_000784.2 and NP_054644.1) and isoform b (NP_001007024.1).

Immunogen

Peptide with sequence EVKKHQHQEDRC, from the internal region of the protein sequence according to NP_000784.2; NP_054644.1; NP_001007024.1.

Please note the [peptide](#) is available for sale.

Purification and Storage

Purified from goat serum by ammonium sulphate precipitation followed by antigen affinity chromatography using the immunizing peptide.

Supplied at 0.5 mg/ml in Tris saline, 0.02% sodium azide, pH7.3 with 0.5% bovine serum albumin.

Aliquot and store at -20°C. Minimize freezing and thawing.

Applications Tested

Peptide ELISA: antibody detection limit dilution 1:128000.

IHC: Cryo-sectioned Mouse Brain (Hippocampus) shows staining in the granular layer of the dentate gyrus. Recommended concentration: 2-3µg/ml. Data obtained from customer.

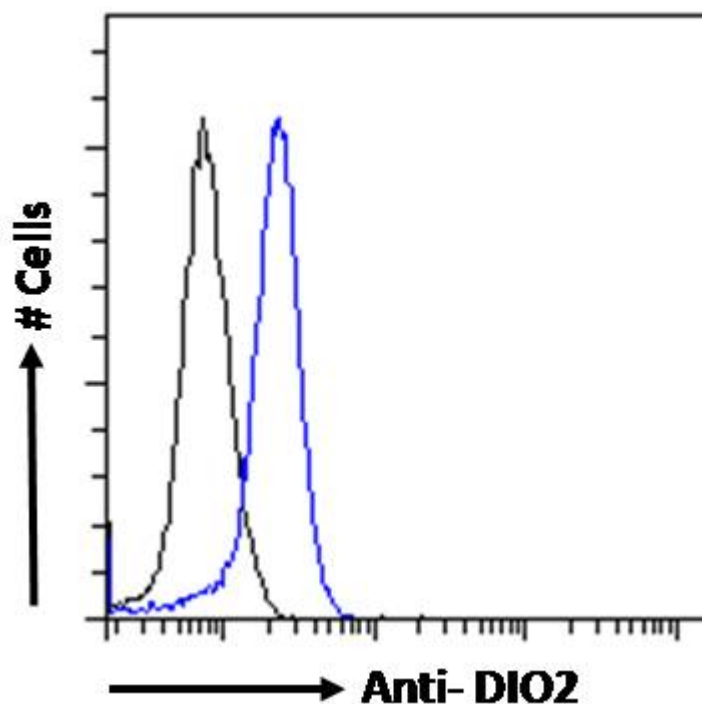
Immunofluorescence: Strong expression of the protein seen in the cytoplasm and nuclei of HeLa cells. Recommended concentration: 10µg/ml.

Flow Cytometry: Flow cytometric analysis of MCF7 cells. Recommended concentration: 10ug/ml.

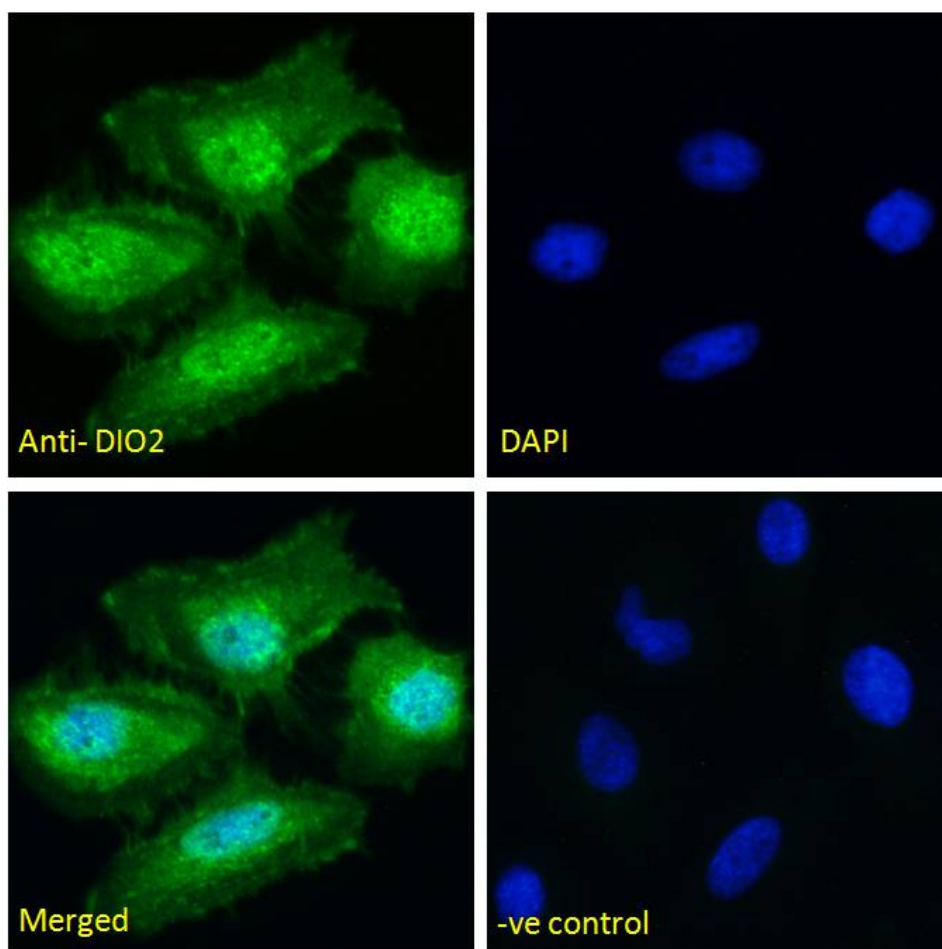
Species Reactivity

Tested: Human, Mouse

Expected from sequence similarity: Human, Mouse, Rat, Pig



EB07628 Flow cytometric analysis of paraformaldehyde fixed MCF7 cells (blue line), permeabilized with 0.5% Triton. Primary incubation 1hr (10ug/ml) followed by Alexa Fluor 488 secondary antibody (1ug/ml). IgG control: Unimmunized goat IgG (black line) followed by Alexa Fluor 488 secondary antibody.



EB07628 Immunofluorescence analysis of paraformaldehyde fixed HeLa cells, permeabilized with 0.15% Triton. Primary incubation 1hr (10ug/ml) followed by Alexa Fluor 488 secondary antibody (2ug/ml), showing nuclear and

cytoplasmic staining. The nuclear stain is DAPI (blue). Negative control: Unimmunized goat IgG (10ug/ml) followed by Alexa Fluor 488 secondary antibody (2ug/ml).



EB07628 (2 μ g/ml) staining of PFA-fixed cryo-sectioned Mouse Hippocampus. Microwaved antigen retrieval with citrate buffer pH 4.5, HRP-staining.