



## UK Office

### Everest Biotech Ltd

Cherwell Innovation Centre  
77 Heyford Park  
Upper Heyford  
Oxfordshire  
OX25 5HD  
UK

Enquiries:

[info@everestbiotech.com](mailto:info@everestbiotech.com)

Sales:

[sales@everestbiotech.com](mailto:sales@everestbiotech.com)

Tech support:

[support@everestbiotech.com](mailto:support@everestbiotech.com)

Tel: +44 (0)1869 238326

[www.everestbiotech.com](http://www.everestbiotech.com)

**Research Use Only. Not for  
diagnostic or therapeutic use.**

## EB06750 - Goat Anti-Dipeptidylpeptidase 10 Antibody

Size: 100µg specific antibody in 200µl



### Target Protein

**Principal Names:** DPP10, dipeptidylpeptidase 10, HGNC:20823, DPRP3, dipeptidyl peptidase IV-related protein 3, dipeptidyl peptidase X, dipeptidyl peptidase-like protein 2, dipeptidyl-peptidase 10, DPL2, DPPY, dipeptidyl peptidase 10, dipeptidyl peptidase like protein 2

**Official Symbol:** DPP10

**Accession Number(s):** NP\_065919.2; NP\_001004360.2

**Human GeneID(s):** [57628](#)

**Important Comments:** This antibody is expected to recognise both reported isoforms NP\_065919.2 and NP\_001004360.2.

### Immunogen

Peptide with sequence C-DEGHNVSEKSKYHL, from the internal region of the protein sequence according to NP\_065919.2; NP\_001004360.2.

Please note the [peptide](#) is available for sale.

### Purification and Storage

Purified from goat serum by ammonium sulphate precipitation followed by antigen affinity chromatography using the immunizing peptide.

Supplied at 0.5 mg/ml in Tris saline, 0.02% sodium azide, pH7.3 with 0.5% bovine serum albumin.

Aliquot and store at -20°C. Minimize freezing and thawing.

### Applications Tested

**Peptide ELISA:** antibody detection limit dilution 1:32000.

**Western blot:** Approx 90kDa band observed in Human Bone Marrow lysates (calculated MW of 90.0kDa according to NP\_065919.2 and of 90.1 according to NP\_001004360.1).

Recommended concentration: 0.1-0.3µg/ml.

**IHC:** Paraffin embedded Human Brain (Cortex and Cerebellum). Recommended concentration: 3.75µg/ml.

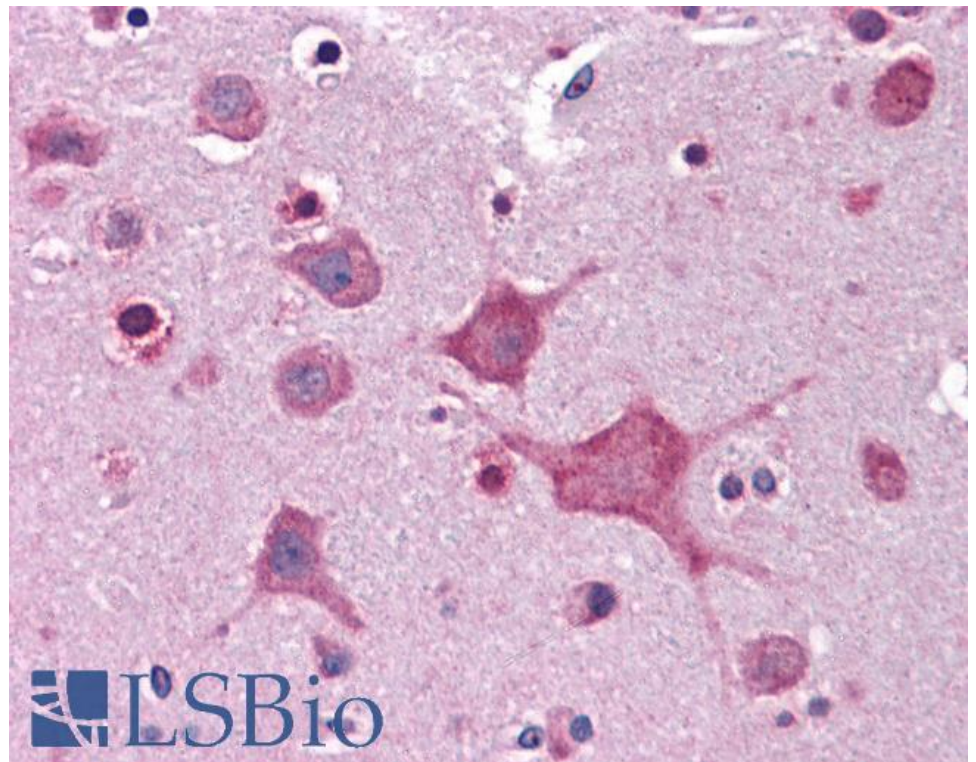
### Species Reactivity

**Tested:** Human

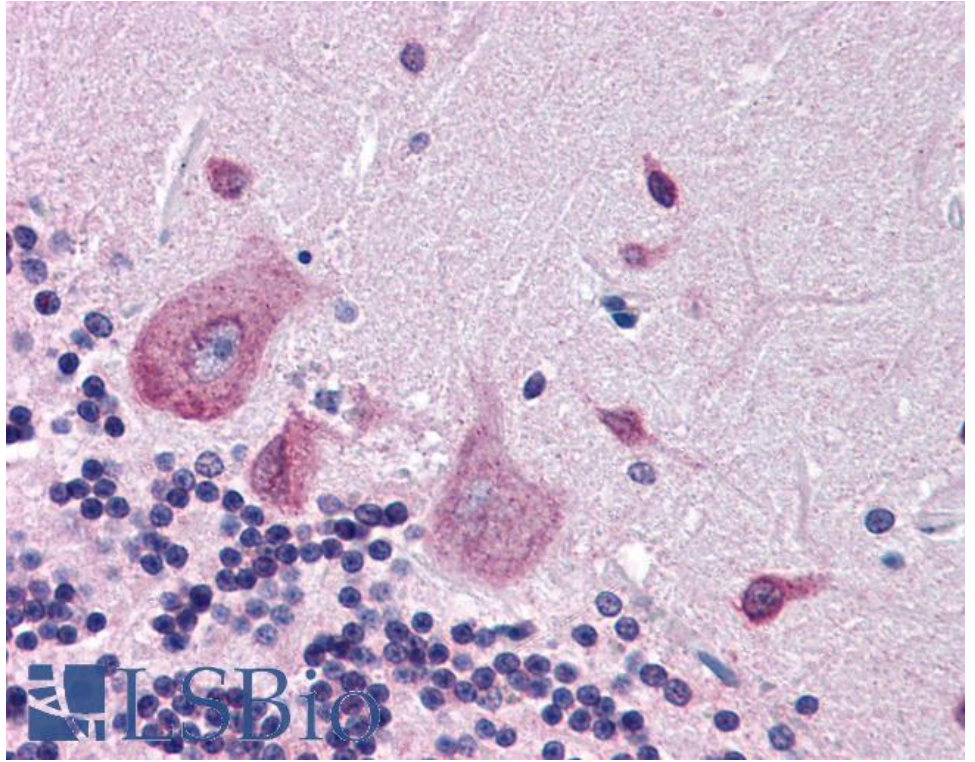
**Expected from sequence similarity:** Human, Dog, Cow



EB06750 (0.1 $\mu$ g/ml) staining of Human Bone Marrow lysate (35 $\mu$ g protein in RIPA buffer). Primary incubation was 1 hour. Detected by chemiluminescence.



EB06750 (3.75 $\mu$ g/ml) staining of paraffin embedded Human Cortex. Steamed antigen retrieval with citrate buffer pH 6, AP-staining.



EB06750 (3.75µg/ml) staining of paraffin embedded Human Cerebellum. Steamed antigen retrieval with citrate buffer pH 6, AP-staining.