



UK Office

Everest Biotech Ltd

Cherwell Innovation Centre
77 Heyford Park
Upper Heyford
Oxfordshire
OX25 5HD
UK

Enquiries:

info@everestbiotech.com

Sales:

sales@everestbiotech.com

Tech support:

support@everestbiotech.com

Tel: +44 (0)1869 238326

Fax: +44 (0)1869 238327

US Office

Everest Biotech c/o Abcore

405 Maple Street, Suite A106
Ramona,
CA 92065
USA

Inquiries:

info@everestbiotech.com

Sales:

usasales@everestbiotech.com

Tech support:

support@everestbiotech.com

Tel: 888-320-4628 (toll-free)

Fax: 888-841-9041

www.everestbiotech.com

**Research Use Only. Not for
diagnostic or therapeutic use.**

EB06750 - Goat Anti-Dipeptidylpeptidase 10 Antibody

Size: 100µg specific antibody in 200µl



Target Protein

Principal Names: DPP10, dipeptidylpeptidase 10, HGNC:20823, DPRP3, dipeptidyl peptidase IV-related protein 3, dipeptidyl peptidase X, dipeptidyl peptidase-like protein 2, dipeptidyl-peptidase 10, DPL2, DPPY, dipeptidyl peptidase 10, dipeptidyl peptidase like protein 2

Official Symbol: DPP10

Accession Number(s): NP_065919.2; NP_001004360.2

Human GeneID(s): [57628](#)

Important Comments: This antibody is expected to recognise both reported isoforms NP_065919.2 and NP_001004360.2.

Immunogen

Peptide with sequence C-DEGHNVSEKSKYHL, from the internal region of the protein sequence according to NP_065919.2; NP_001004360.2.

Please note the [peptide](#) is available for sale.

Purification and Storage

Purified from goat serum by ammonium sulphate precipitation followed by antigen affinity chromatography using the immunizing peptide.

Supplied at 0.5 mg/ml in Tris saline, 0.02% sodium azide, pH7.3 with 0.5% bovine serum albumin.

Aliquot and store at -20°C. Minimize freezing and thawing.

Applications Tested

Peptide ELISA: antibody detection limit dilution 1:32000.

Western blot: Approx 90kDa band observed in Human Bone Marrow lysates (calculated MW of 90.0kDa according to NP_065919.2 and of 90.1 according to NP_001004360.1).

Recommended concentration: 0.1-0.3µg/ml.

IHC: Paraffin embedded Human Brain (Cortex and Cerebellum). Recommended concentration: 3.75µg/ml.

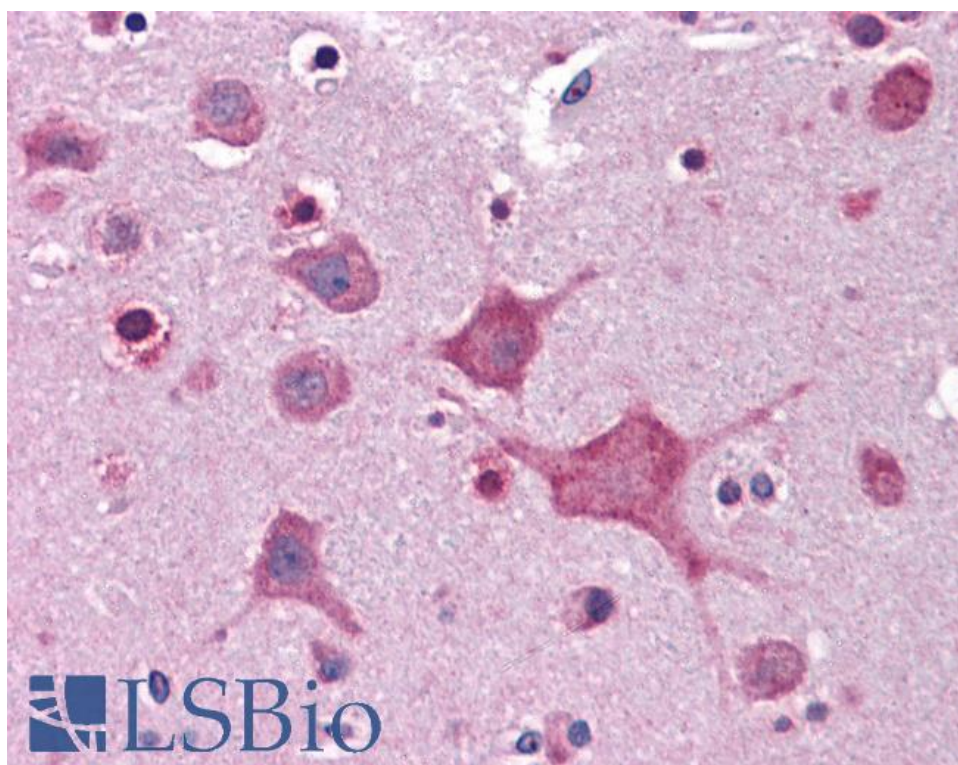
Species Reactivity

Tested: Human

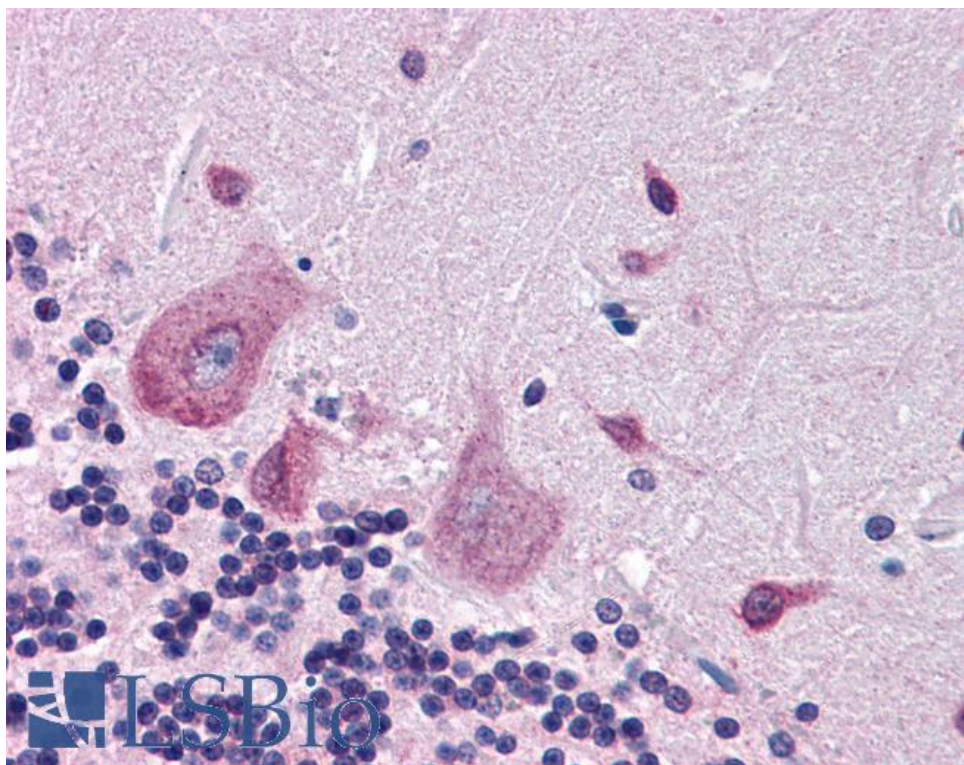
Expected from sequence similarity: Human, Dog, Cow



EB06750 (0.1 μ g/ml) staining of Human Bone Marrow lysate (35 μ g protein in RIPA buffer). Primary incubation was 1 hour. Detected by chemiluminescence.



EB06750 (3.75 μ g/ml) staining of paraffin embedded Human Cortex. Steamed antigen retrieval with citrate buffer pH 6, AP-staining.



EB06750 (3.75µg/ml) staining of paraffin embedded Human Cerebellum. Steamed antigen retrieval with citrate buffer pH 6, AP-staining.