

UK Office

Everest Biotech Ltd

Cherwell Innovation Centre
77 Heyford Park
Upper Heyford
Oxfordshire
OX25 5HD
UK

Enquiries:

info@everestbiotech.com

Sales:

sales@everestbiotech.com

Tech support:

support@everestbiotech.com

Tel: +44 (0)1869 238326

www.everestbiotech.com

**Research Use Only. Not for
diagnostic or therapeutic use.**

EB07358 - Goat Anti-DISC1 Antibody

Size: 100µg specific antibody in 200µl



Target Protein

Principal Names: DISC1, disrupted in schizophrenia 1, RP4-730B13.1, KIAA0457

Official Symbol: DISC1

Accession Number(s): NP_001012975.1; NP_061132.2

Human GeneID(s): [27185](#)

Important Comments: This antibody is expected to recognise isoforms L (NP_061132.2) and Lv (NP_001012975.1) only.

Immunogen

Peptide with sequence C-HSEDKRKTKPLKVLE, from the internal region of the protein sequence according to NP_001012975.1; NP_061132.2.

Please note the [peptide](#) is available for sale.

Purification and Storage

Purified from goat serum by ammonium sulphate precipitation followed by antigen affinity chromatography using the immunizing peptide.

Supplied at 0.5 mg/ml in Tris saline, 0.02% sodium azide, pH7.3 with 0.5% bovine serum albumin.

Aliquot and store at -20°C. Minimize freezing and thawing.

Applications Tested

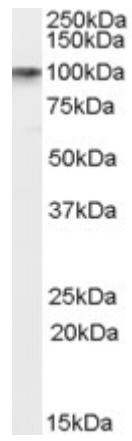
Peptide ELISA: antibody detection limit dilution 1:128000.

Western blot: Approx 100kDa band observed in Human Brain (Hippocampus) lysates (calculated MW of 93.6kDa according to NP_001012975.1). Recommended concentration: 0.1-0.3µg/ml. Primary incubation 1 hour at room temperature.

Species Reactivity

Tested: Human

Expected from sequence similarity: Human



EB07358 (0.1 μ g/ml) staining of Human Hippocampus lysate (35 μ g protein in RIPA buffer). Primary incubation was 1 hour. Detected by chemiluminescence.