



International Office

Everest Biotech Ltd

Vector Laboratories, Inc.
6737 Mowry Ave
Newark, CA 94560
United States

Customer Service:

customerservice@vectorlabs.com

Technical Service:

technical@vectorlabs.com

Tel: +1 (800) 227-6666

www.everestbiotech.com

**Research Use Only. Not for
diagnostic or therapeutic use.**

EB11466 - Goat Anti-Dishevelled1 (aa20-32) Antibody

Size: 100µg specific antibody in 200µl



Target Protein

Principal Names: Dvl1, dishevelled, dsh homolog 1 (Drosophila), RP23-242K15.15-003, Dvl, mKIAA4029, DSH homolog 1, dishevelled-1, segment polarity protein dishevelled homolog DVL-1

Official Symbol: Dvl1

Accession Number(s): NP_034221.3

Human GeneID(s): [1855](#)

Non-Human GeneID(s): 13542 (mouse), 83721 (rat)

Immunogen

Peptide with sequence KLPVAPERVTAD-C, from the N Terminus of the protein sequence according to NP_034221.3.

Please note the [peptide](#) is available for sale.

Purification and Storage

Purified from goat serum by ammonium sulphate precipitation followed by antigen affinity chromatography using the immunizing peptide.

Supplied at 0.5 mg/ml in Tris saline, 0.02% sodium azide, pH7.3 with 0.5% bovine serum albumin.

Aliquot and store at -20°C. Minimize freezing and thawing.

Applications Tested

Peptide ELISA: antibody detection limit dilution 1:128000.

IHC: Paraffin embedded Human Skeletal Muscle and Kidney. Recommended concentration: 5µg/ml.

Species Reactivity

Tested: Human

Expected from sequence similarity: Human, Mouse, Rat, Pig, Cow

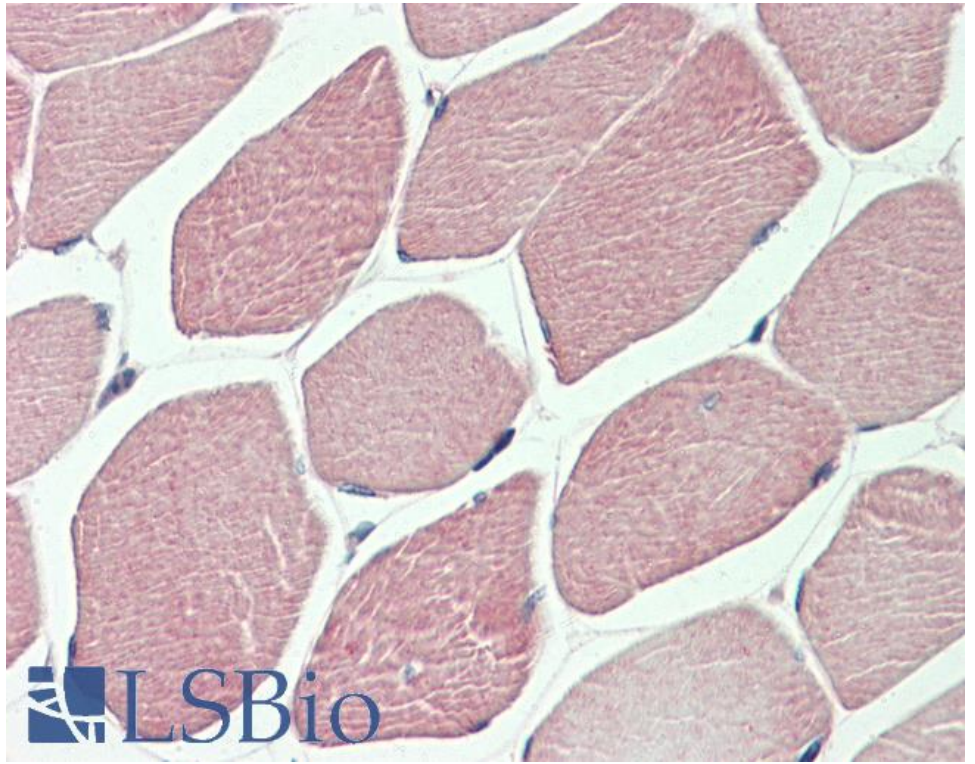
Specific Reference

Spate LD, Brown AN, Redel BK, Whitworth KM, Murphy CN, Prather RS.

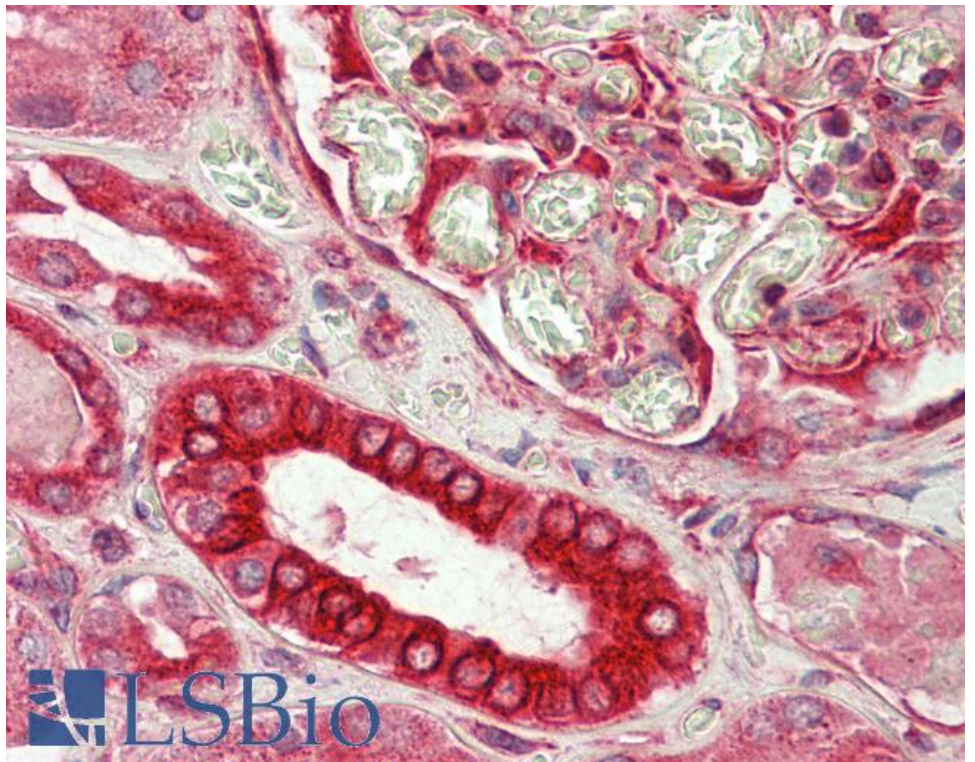
Dickkopf-related protein 1 inhibits the WNT signaling pathway and improves pig oocyte maturation.

PLoS One. 2014 Apr 16;9(4):e95114.

PMID: 24739947



EB11466 (5 μ g/ml) staining of paraffin embedded Human Skeletal Muscle. Steamed antigen retrieval with citrate buffer pH 6, AP-staining.



EB11466 (5 μ g/ml) staining of paraffin embedded Human Kidney. Steamed antigen retrieval with citrate buffer pH 6, AP-staining.