

UK Office

Everest Biotech Ltd

Cherwell Innovation Centre
77 Heyford Park
Upper Heyford
Oxfordshire
OX25 5HD
UK

Enquiries:

info@everestbiotech.com

Sales:

sales@everestbiotech.com

Tech support:

support@everestbiotech.com

Tel: +44 (0)1869 238326

www.everestbiotech.com

**Research Use Only. Not for
diagnostic or therapeutic use.**

EB09762 - Goat Anti-DIXDC1 Antibody

Size: 100µg specific antibody in 200µl



Target Protein

Principal Names: DIXDC1, DIX domain containing 1, CCD1, KIAA1735

Official Symbol: DIXDC1

Accession Number(s): NP_001033043.1; NP_219493.1

Human GeneID(s): [85458](#)

Non-Human GeneID(s): 330938 (mouse), 363062 (rat)

Important Comments: This antibody is expected to recognize both isoforms (NP_001033043.1; NP_219493.1).

Immunogen

Peptide with sequence C-DVSYHQVDLERE, from the internal region of the protein sequence according to NP_001033043.1; NP_219493.1.

Please note the [peptide](#) is available for sale.

Purification and Storage

Purified from goat serum by ammonium sulphate precipitation followed by antigen affinity chromatography using the immunizing peptide.

Supplied at 0.5 mg/ml in Tris saline, 0.02% sodium azide, pH7.3 with 0.5% bovine serum albumin.

Aliquot and store at -20°C. Minimize freezing and thawing.

Applications Tested

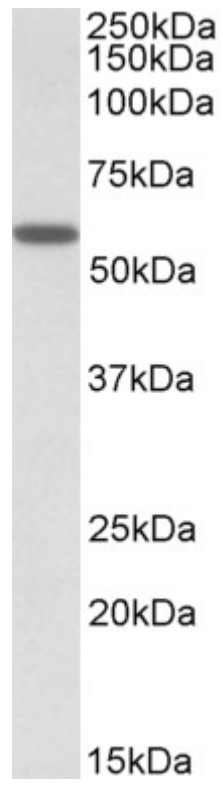
Peptide ELISA: antibody detection limit dilution 1:64000.

Western blot: Approx 60kDa band observed in Human Heart and Skeletal Muscle lysates (calculated MW of 53.9kDa according to NP_219493.1). Recommended concentration: 0.5-2µg/ml.

Species Reactivity

Tested: Human

Expected from sequence similarity: Human, Mouse, Rat, Dog, Cow



EB09762 (0.5 μ g/ml) staining of Human Skeletal Muscle lysate (35 μ g protein in RIPA buffer). Primary incubation was 1 hour. Detected by chemiluminescence.