



## UK Office

### Everest Biotech Ltd

Cherwell Innovation Centre  
77 Heyford Park  
Upper Heyford  
Oxfordshire  
OX25 5HD  
UK

Enquiries:

[info@everestbiotech.com](mailto:info@everestbiotech.com)

Sales:

[sales@everestbiotech.com](mailto:sales@everestbiotech.com)

Tech support:

[support@everestbiotech.com](mailto:support@everestbiotech.com)

Tel: +44 (0)1869 238326

Fax: +44 (0)1869 238327

## US Office

### Everest Biotech c/o Abcore

405 Maple Street, Suite A106  
Ramona,  
CA 92065  
USA

Inquiries:

[info@everestbiotech.com](mailto:info@everestbiotech.com)

Sales:

[usasales@everestbiotech.com](mailto:usasales@everestbiotech.com)

Tech support:

[support@everestbiotech.com](mailto:support@everestbiotech.com)

Tel: 888-320-4628 (toll-free)

Fax: 888-841-9041

[www.everestbiotech.com](http://www.everestbiotech.com)

**Research Use Only. Not for  
diagnostic or therapeutic use.**

## EB09762 - Goat Anti-DIXDC1 Antibody

Size: 100µg specific antibody in 200µl



### Target Protein

**Principal Names:** DIXDC1, DIX domain containing 1, CCD1, KIAA1735

**Official Symbol:** DIXDC1

**Accession Number(s):** NP\_001033043.1; NP\_219493.1

**Human GeneID(s):** [85458](#)

**Non-Human GeneID(s):** 330938 (mouse), 363062 (rat)

**Important Comments:** This antibody is expected to recognize both isoforms (NP\_001033043.1; NP\_219493.1).

### Immunogen

Peptide with sequence C-DVSYHQVDLRE, from the internal region of the protein sequence according to NP\_001033043.1; NP\_219493.1.

Please note the [peptide](#) is available for sale.

### Purification and Storage

Purified from goat serum by ammonium sulphate precipitation followed by antigen affinity chromatography using the immunizing peptide.

Supplied at 0.5 mg/ml in Tris saline, 0.02% sodium azide, pH7.3 with 0.5% bovine serum albumin.

Aliquot and store at -20°C. Minimize freezing and thawing.

### Applications Tested

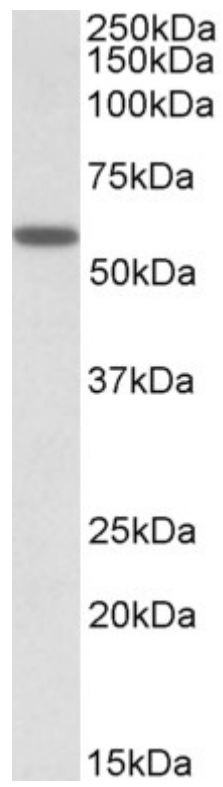
**Peptide ELISA:** antibody detection limit dilution 1:64000.

**Western blot:** Approx 60kDa band observed in Human Heart and Skeletal Muscle lysates (calculated MW of 53.9kDa according to NP\_219493.1). Recommended concentration: 0.5-2µg/ml.

### Species Reactivity

**Tested:** Human

**Expected from sequence similarity:** Human, Mouse, Rat, Dog, Cow



EB09762 (0.5 $\mu$ g/ml) staining of Human Skeletal Muscle lysate (35 $\mu$ g protein in RIPA buffer). Primary incubation was 1 hour. Detected by chemiluminescence.