



UK Office

Everest Biotech Ltd

Cherwell Innovation Centre
77 Heyford Park
Upper Heyford
Oxfordshire
OX25 5HD
UK

Enquiries:

info@everestbiotech.com

Sales:

sales@everestbiotech.com

Tech support:

support@everestbiotech.com

Tel: +44 (0)1869 238326

Fax: +44 (0)1869 238327

US Office

Everest Biotech c/o Abcore

405 Maple Street, Suite A106
Ramona,
CA 92065
USA

Inquiries:

info@everestbiotech.com

Sales:

usasales@everestbiotech.com

Tech support:

support@everestbiotech.com

Tel: 888-320-4628 (toll-free)

Fax: 888-841-9041

www.everestbiotech.com

**Research Use Only. Not for
diagnostic or therapeutic use.**

EB05361 - Goat Anti-DKK3 / REIC Antibody

Size: 100µg specific antibody in 200µl



Target Protein

Principal Names: DKK3, REIC, dickkopf homolog 3 (Xenopus laevis), DKK-3, RIG-like 5-6, RIG-like 7-1, dickkopf 3, Dickkopf gene 3, dickkopf (Xenopus laevis) homolog 3, dickkopf homolog 3, RIG, regulated in glioma

Official Symbol: DKK3

Accession Number(s): NP_037385.2; NP_056965.3; NP_001018067.1

Human GeneID(s): [27122](#)

Important Comments: NP_037385.2; NP_056965.3 and NP_001018067.1 are variants of the same protein.

Immunogen

Peptide with sequence C-AAAALLGGEEI, from the C Terminus of the protein sequence according to NP_037385.2; NP_056965.3; NP_001018067.1.

Please note the [peptide](#) is available for sale.

Purification and Storage

Purified from goat serum by ammonium sulphate precipitation followed by antigen affinity chromatography using the immunizing peptide.

Supplied at 0.5 mg/ml in Tris saline, 0.02% sodium azide, pH7.3 with 0.5% bovine serum albumin.

Aliquot and store at -20°C. Minimize freezing and thawing.

Applications Tested

Peptide ELISA: antibody detection limit dilution 1:16000.

Western blot: Approx 38kDa band observed in Human Brain (Cerebellum) lysates (calculated MW of 38.4kDa according to NP_037385.2). Recommended concentration: 1-3µg/ml. Primary incubation 1 hour at room temperature.

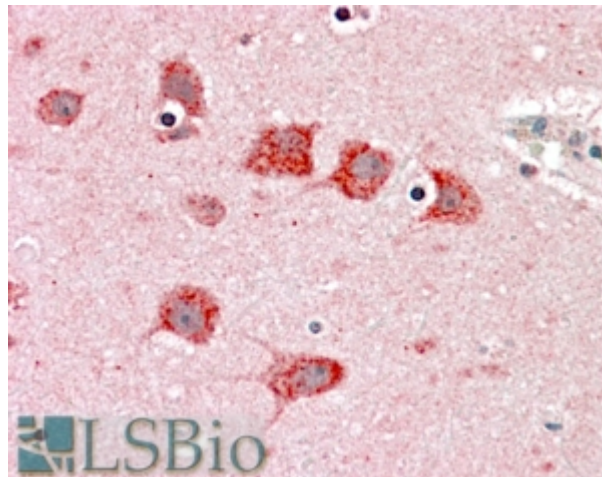
Species Reactivity

Tested: Human

Expected from sequence similarity: Human



EB05361 staining (2 μ g/ml) of Human Cerebellum lysate (RIPA buffer, 35 μ g total protein per lane). Detected by chemiluminescence.



EB05361 (5 μ g/ml) staining of paraffin embedded Human Cortex. Steamed antigen retrieval with citrate buffer pH 6, AP-staining. **This data is from a previous batch, not on sale.**