

International Office

Everest Biotech Ltd

Vector Laboratories, Inc.
6737 Mowry Ave
Newark, CA 94560
United States

Customer Service:

customerservice@vectorlabs.com

Technical Service:

technical@vectorlabs.com

Tel: +1 (800) 227-6666

www.everestbiotech.com

**Research Use Only. Not for
diagnostic or therapeutic use.**

EB09176 - Goat Anti-DLGAP1 / GKAP Antibody

Size: 100µg specific antibody in 200µl



Target Protein

Principal Names: DLGAP1, discs, large (Drosophila) homolog-associated protein 1, DAP-1, DAP-1-ALPHA, DAP-1-BETA, GKAP, MGC88156, SAPAP1, hGKAP, PSD-95/SAP90 binding protein 1, SAP90/PSD-95-associated protein 1, discs large homolog-associated protein 1, disks large-associated protein 1, guanylate kinase-associated protein

Official Symbol: DLGAP1

Accession Number(s): NP_004737.2; NP_001003809.1

Human GeneID(s): [9229](#)

Important Comments: This antibody is expected to recognize both reported isoforms (NP_001003809.1; NP_004737.2)

Immunogen

Peptide with sequence C-KISNEHSPKLQIRSH, from the internal region of the protein sequence according to NP_004737.2; NP_001003809.1.

Please note the [peptide](#) is available for sale.

Purification and Storage

Purified from goat serum by ammonium sulphate precipitation followed by antigen affinity chromatography using the immunizing peptide.

Supplied at 0.5 mg/ml in Tris saline, 0.02% sodium azide, pH7.3 with 0.5% bovine serum albumin.

Aliquot and store at -20°C. Minimize freezing and thawing.

Applications Tested

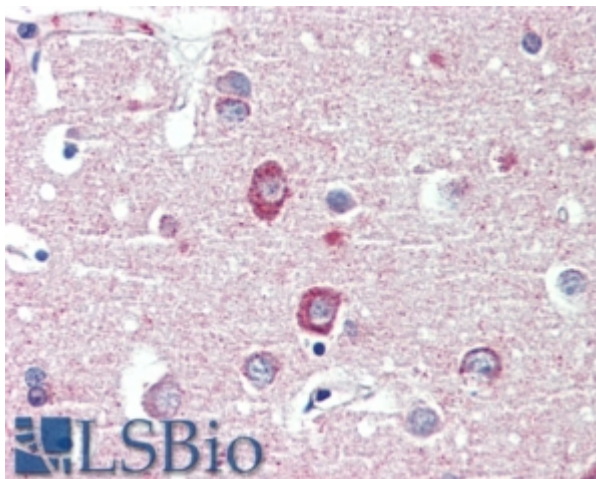
Peptide ELISA: antibody detection limit dilution 1:64000.

IHC: In paraffin embedded Human Cortex shows cytoplasm staining in neuronal cell bodies. Recommended concentration, 3-6µg/ml.

Species Reactivity

Tested: Human

Expected from sequence similarity: human



EB09176 (3.8µg/ml) staining of paraffin embedded Human Cortex. Steamed antigen retrieval with citrate buffer pH 6, AP-staining.