



International Office

Everest Biotech Ltd

Vector Laboratories, Inc.
6737 Mowry Ave
Newark, CA 94560
United States

Customer Service:

customerservice@vectorlabs.com

Technical Service:

technical@vectorlabs.com

Tel: +1 (800) 227-6666

www.everestbiotech.com

**Research Use Only. Not for
diagnostic or therapeutic use.**

EB08011 - Goat Anti-DLL4 Antibody

Size: 100µg specific antibody in 200µl



Target Protein

Principal Names: DLL4, delta-like 4 (Drosophila), MGC126344, hdelta2, delta 4, delta ligand 4, delta-like 4 homolog, delta-like 4 protein, notch ligand DLL4, notch ligand delta-2

Official Symbol: DLL4

Accession Number(s): NP_061947.1

Human GeneID(s): [54567](#)

Important Comments: Notch signaling

Immunogen

Peptide with sequence KNTNQKKELEVDC, from the internal region of the protein sequence according to NP_061947.1.

Please note the [peptide](#) is available for sale.

Purification and Storage

Purified from goat serum by ammonium sulphate precipitation followed by antigen affinity chromatography using the immunizing peptide.

Supplied at 0.5 mg/ml in Tris saline, 0.02% sodium azide, pH7.3 with 0.5% bovine serum albumin.

Aliquot and store at -20°C. Minimize freezing and thawing.

Applications Tested

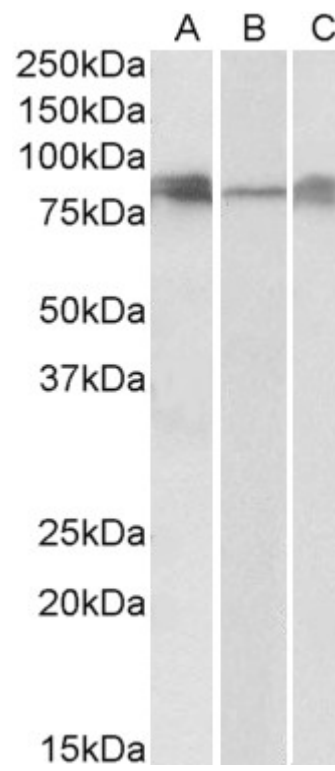
Peptide ELISA: antibody detection limit dilution 1:64000.

Western blot: Approx 80-85kDa bands observed in Human, Mouse and Rat Lung lysates (calculated MW of 74.6kDa according to NP_061947.1). Recommended concentration: 0.3-1µg/ml. Primary incubation was 1 hour.

Species Reactivity

Tested: Human, Mouse, Rat

Expected from sequence similarity: Human, Mouse, Rat



EB08011 (0.3 μ g/ml) staining of Human (A), Mouse (B) and Rat (C) Lung lysates (35 μ g protein in RIPA buffer).
Detected by chemiluminescence