



## International Office

### Everest Biotech Ltd

Vector Laboratories, Inc.  
6737 Mowry Ave  
Newark, CA 94560  
United States

Customer Service:

[customerservice@vectorlabs.com](mailto:customerservice@vectorlabs.com)

Technical Service:

[technical@vectorlabs.com](mailto:technical@vectorlabs.com)

Tel: +1 (800) 227-6666

[www.everestbiotech.com](http://www.everestbiotech.com)

**Research Use Only. Not for  
diagnostic or therapeutic use.**

## EB09408 - Goat Anti-DMRT2 Antibody

Size: 100µg specific antibody in 200µl



### Target Protein

**Principal Names:** DMRT2, doublesex and mab-3 related transcription factor 2, OTTHUMP00000020964, OTTHUMP00000020965, OTTHUMP00000020966, OTTHUMP00000020967, terra-like protein

**Official Symbol:** DMRT2

**Accession Number(s):** NP\_006548.1; NP\_870987.2

**Human GeneID(s):** [10655](#)

**Non-Human GeneID(s):** 226049 (mouse), 309430 (rat)

**Important Comments:** This antibody is expected to recognize isoform 2 only (NP\_870987.2). Reported variants NP\_001124337.1 and NP\_006548.1 represent identical protein

### Immunogen

Peptide with sequence C-KRPSSAITRVSQ, from the C Terminus of the protein sequence according to NP\_006548.1; NP\_870987.2.

Please note the [peptide](#) is available for sale.

### Purification and Storage

Purified from goat serum by ammonium sulphate precipitation followed by antigen affinity chromatography using the immunizing peptide.

Supplied at 0.5 mg/ml in Tris saline, 0.02% sodium azide, pH7.3 with 0.5% bovine serum albumin.

Aliquot and store at -20°C. Minimize freezing and thawing.

### Applications Tested

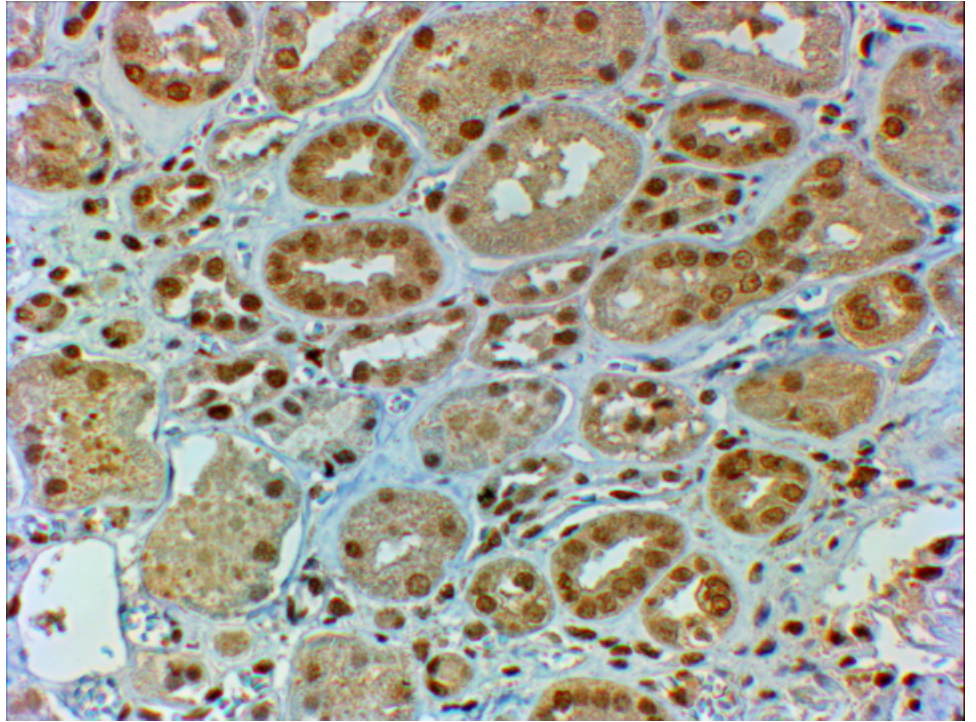
**Peptide ELISA:** antibody detection limit dilution 1:8000.

**IHC:** In paraffin embedded Human Kidney shows nuclear staining primarily in the DCT. Recommended concentration, 2-4µg/ml.

### Species Reactivity

**Tested:** Human

**Expected from sequence similarity:** Human, Mouse, Rat, Cow



EB09408 (2 $\mu$ g/ml) staining of paraffin embedded Human Kidney. Steamed antigen retrieval with citrate buffer pH 6, HRP-staining.