

## UK Office

### Everest Biotech Ltd

Cherwell Innovation Centre  
77 Heyford Park  
Upper Heyford  
Oxfordshire  
OX25 5HD  
UK

Enquiries:

[info@everestbiotech.com](mailto:info@everestbiotech.com)

Sales:

[sales@everestbiotech.com](mailto:sales@everestbiotech.com)

Tech support:

[support@everestbiotech.com](mailto:support@everestbiotech.com)

Tel: +44 (0)1869 238326

[www.everestbiotech.com](http://www.everestbiotech.com)

**Research Use Only. Not for  
diagnostic or therapeutic use.**

## EB12122 - Goat Anti-DMTF1 (isoform a) Antibody

Size: 100µg specific antibody in 200µl



### Target Protein

**Principal Names:** DMTF1, cyclin D binding myb-like transcription factor 1, DMP1, DMTF, hDMP1, cyclin D-binding Myb-like protein, cyclin-D-binding Myb-like transcription factor 1, cyclin-D-interacting Myb-like protein 1, hDMTF1

**Official Symbol:** DMTF1

**Accession Number(s):** NP\_066968.3; NP\_001135798.1

**Human GeneID(s):** [9988](#)

**Non-Human GeneID(s):** 23857 (mouse)

**Important Comments:** This antibody is expected to recognize both reported isoform a (NP\_066968.3) only. Reported variants represent identical protein: NP\_066968.3, NP\_001135799.1

### Immunogen

Peptide with sequence CPQNEADEIDSEDS, from the N-Terminus of the protein sequence according to NP\_066968.3; NP\_001135798.1.

Please note the [peptide](#) is available for sale.

### Purification and Storage

Purified from goat serum by ammonium sulphate precipitation followed by antigen affinity chromatography using the immunizing peptide.

Supplied at 0.5 mg/ml in Tris saline, 0.02% sodium azide, pH7.3 with 0.5% bovine serum albumin.

Aliquot and store at -20°C. Minimize freezing and thawing.

### Applications Tested

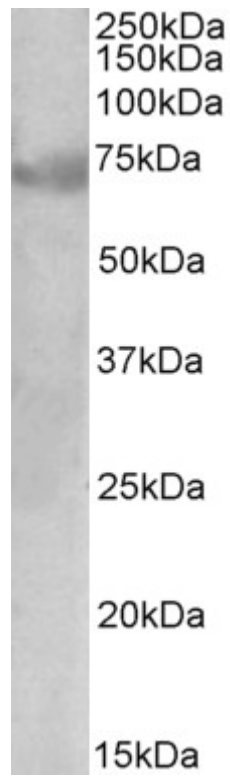
**Peptide ELISA:** antibody detection limit dilution 1:16000.

**Western blot:** Approx 70kDa band observed in Human Lung and Testis lysates (calculated MW of 74.9kDa according to NP\_001135798.1). Recommended concentration: 1-3µg/ml.

### Species Reactivity

**Tested:** Human, Mouse, Rat

**Expected from sequence similarity:** Human, Dog, Pig, Cow



EB12122 (1 $\mu$ g/ml) staining of Human Lung lysate (35 $\mu$ g protein in RIPA buffer). Primary incubation was 1 hour.  
Detected by chemiluminescence.