



## International Office

### Everest Biotech Ltd

Vector Laboratories, Inc.  
6737 Mowry Ave  
Newark, CA 94560  
United States

Customer Service:

[customerservice@vectorlabs.com](mailto:customerservice@vectorlabs.com)

Technical Service:

[technical@vectorlabs.com](mailto:technical@vectorlabs.com)

Tel: +1 (800) 227-6666

[www.everestbiotech.com](http://www.everestbiotech.com)

**Research Use Only. Not for  
diagnostic or therapeutic use.**

## EB11846 - Goat Anti-Dnajc5 (aa177-191) Antibody

Size: 100µg specific antibody in 200µl



### Target Protein

**Principal Names:** 2610314I24Rik, AU018536, Csp, cysteine string protein, DnaJ (Hsp40) homolog, subfamily C, member 5, dnaJ homolog subfamily C member 5, Dnajc5

**Official Symbol:** Dnajc5

**Accession Number(s):** NP\_058055.1

**Human GeneID(s):** [80331](#)

**Non-Human GeneID(s):** 13002 (mouse), 79130 (rat)

### Immunogen

Peptide with sequence C-SATETTQLTADSHPS, from the C Terminus of the protein sequence according to NP\_058055.1.

Please note the [peptide](#) is available for sale.

### Purification and Storage

Purified from goat serum by ammonium sulphate precipitation followed by antigen affinity chromatography using the immunizing peptide.

Supplied at 0.5 mg/ml in Tris saline, 0.02% sodium azide, pH7.3 with 0.5% bovine serum albumin.

Aliquot and store at -20°C. Minimize freezing and thawing.

### Applications Tested

**Peptide ELISA:** antibody detection limit dilution 1:64000.

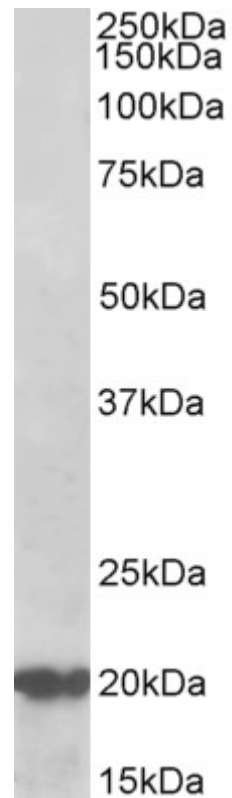
**Western blot:** Approx 20kDa band observed in Human Brain (Cerebellum) lysates (calculated MW of 22.1kDa according to NP\_058055.1). Recommended concentration: 0.5-1.5µg/ml. Preliminary testing was unsuccessful on Mouse and Rat Brain for this particular batch.

**IHC:** Paraffin embedded Human Skeletal Muscle. Recommended concentration: 5µg/ml.

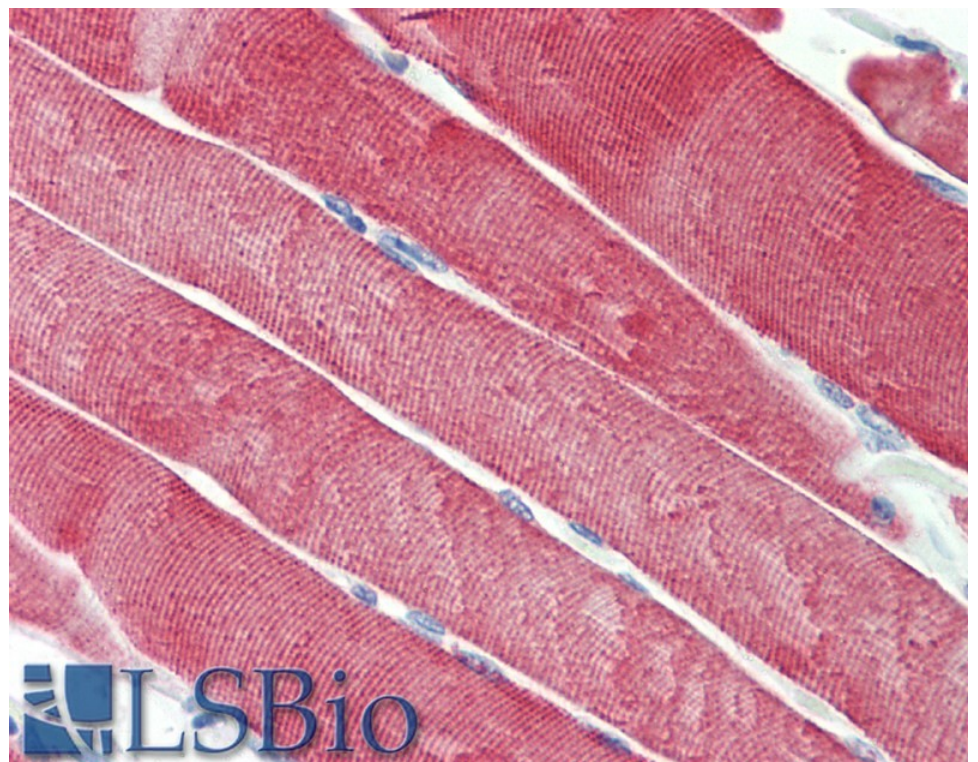
### Species Reactivity

**Tested:** Human

**Expected from sequence similarity:** Human, Mouse, Rat, Dog, Cow



EB11846 (0.5 $\mu$ g/ml) staining of Human Cerebellum lysate (35 $\mu$ g protein in RIPA buffer). Primary incubation was 1 hour. Detected by chemiluminescence.



EB11846 (5 $\mu$ g/ml) staining of paraffin embedded Human Skeletal Muscle. Steamed antigen retrieval with citrate buffer pH 6, AP-staining.