



International Office

Everest Biotech Ltd

Vector Laboratories, Inc.
6737 Mowry Ave
Newark, CA 94560
United States

Customer Service:

customerservice@vectorlabs.com

Technical Service:

technical@vectorlabs.com

Tel: +1 (800) 227-6666

www.everestbiotech.com

**Research Use Only. Not for
diagnostic or therapeutic use.**

EB11850 - Goat Anti-DNAJC5G (human) Antibody

Size: 100µg specific antibody in 200µl



Target Protein

Principal Names: CSP-gamma, cysteine string protein-gamma, DNAJ (Hsp40) homolog, subfamily C, member 5 gamma, DNAJ homolog subfamily C member 5G, DNAJC5G, FLJ40417, gamma cysteine string protein, gamma-CSP, gamma-cysteine string protein

Official Symbol: DNAJC5G

Accession Number(s): NP_775921.1

Human GeneID(s): [285126](#)

Immunogen

Peptide with sequence C-DSGRKYQQNVQSQP, from the internal region (near C Terminus) of the protein sequence according to NP_775921.1.

Please note the [peptide](#) is available for sale.

Purification and Storage

Purified from goat serum by ammonium sulphate precipitation followed by antigen affinity chromatography using the immunizing peptide.

Supplied at 0.5 mg/ml in Tris saline, 0.02% sodium azide, pH7.3 with 0.5% bovine serum albumin.

Aliquot and store at -20°C. Minimize freezing and thawing.

Applications Tested

Peptide ELISA: antibody detection limit dilution 1:128000.

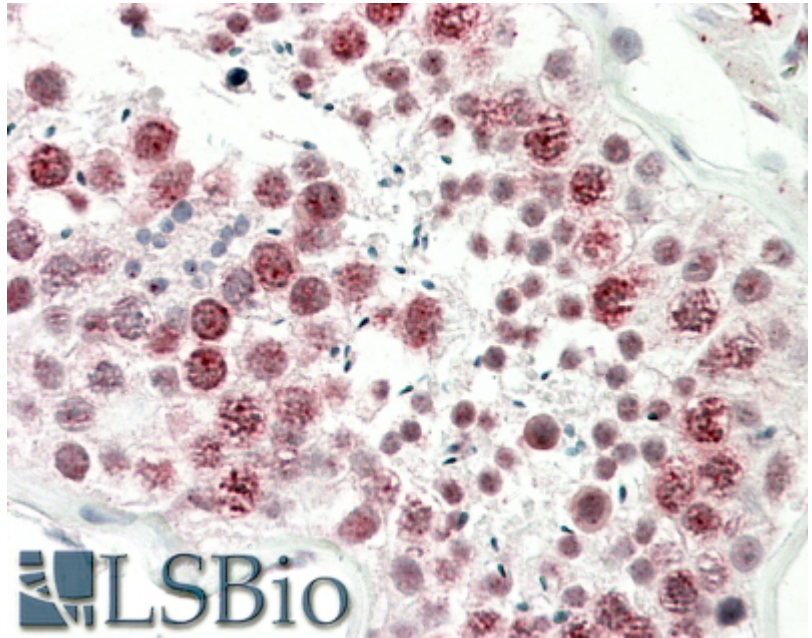
Western blot: Preliminary experiments gave an approx 28kDa band in Human Testis lysates after 0.05µg/ml antibody staining. Please note that currently we cannot find an explanation in the literature for the band we observe given the calculated size of 21.4kDa according to provisional NP_775921.1. The 28kDa band was successfully blocked by incubation with the immunizing peptide. We would appreciate any feedback from people in the field - have any results been reported with other antibodies/lysates? Have any further splice variants/modified forms been reported?

IHC: In paraffin embedded Human Testis shows nuclear staining primarily in spermatogonia and in cellular membrane. Recommended concentration, 5-10µg/ml.

Species Reactivity

Tested: Human

Expected from sequence similarity: Human



EB11850 (5µg/ml) staining of paraffin embedded Human Testis. Steamed antigen retrieval with citrate buffer pH 6, AP-staining.