



International Office

Everest Biotech Ltd

Vector Laboratories, Inc.
6737 Mowry Ave
Newark, CA 94560
United States

Customer Service:

customerservice@vectorlabs.com

Technical Service:

technical@vectorlabs.com

Tel: +1 (800) 227-6666

www.everestbiotech.com

**Research Use Only. Not for
diagnostic or therapeutic use.**

EB05183 - Goat Anti-DOCK1 Antibody

Size: 100µg specific antibody in 200µl



Target Protein

Principal Names: DOCK1, DOCK180, dedicator of cyto-kinesis 1, RP11-82L9.1, ced5

Official Symbol: DOCK1

Accession Number(s): NP_001371.1

Human GeneID(s): [1793](#)

Non-Human GeneID(s): 330662 (mouse)

Immunogen

Peptide with sequence C-TTRKQTSVDSGIVQ, from the C Terminus of the protein sequence according to NP_001371.1.

Please note the [peptide](#) is available for sale.

Purification and Storage

Purified from goat serum by ammonium sulphate precipitation followed by antigen affinity chromatography using the immunizing peptide.

Supplied at 0.5 mg/ml in Tris saline, 0.02% sodium azide, pH7.3 with 0.5% bovine serum albumin.

Aliquot and store at -20°C. Minimize freezing and thawing.

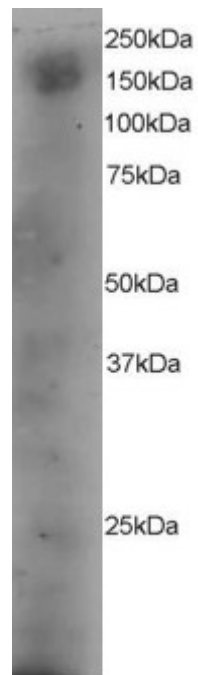
Applications Tested

Western blot: Approx 150-200kDa band seen in A431 cell lysate. Recommended for use at 3-4µg/ml.

Species Reactivity

Tested: Human

Expected from sequence similarity: Human, Mouse, Rat, Dog, Pig, Cow



EB05183 staining (4 μ g/ml) of A431 lysate (RIPA buffer, 35 μ g total protein per lane). Primary incubated for 12 hour. Detected by western blot using chemiluminescence.