



## UK Office

### Everest Biotech Ltd

Cherwell Innovation Centre  
77 Heyford Park  
Upper Heyford  
Oxfordshire  
OX25 5HD  
UK

Enquiries:

[info@everestbiotech.com](mailto:info@everestbiotech.com)

Sales:

[sales@everestbiotech.com](mailto:sales@everestbiotech.com)

Tech support:

[support@everestbiotech.com](mailto:support@everestbiotech.com)

Tel: +44 (0)1869 238326

[www.everestbiotech.com](http://www.everestbiotech.com)

**Research Use Only. Not for  
diagnostic or therapeutic use.**

## EB05210 - Goat Anti-DOK3 Antibody

Size: 100µg specific antibody in 200µl



### Target Protein

**Principal Names:** DOK3, Docking Protein 3, FLJ22570, FLJ39939, DOKL, FLJ39939,  
Dok-like protein

**Official Symbol:** DOK3

**Accession Number(s):** NP\_079148.2

**Human GeneID(s):** [79930](#)

**Non-Human GeneID(s):** 27261 (mouse)

### Immunogen

Peptide with sequence TRERRKGPAPCDRP, from the C Terminus of the protein sequence according to NP\_079148.2.

Please note the [peptide](#) is available for sale.

### Purification and Storage

Purified from goat serum by ammonium sulphate precipitation followed by antigen affinity chromatography using the immunizing peptide.

Supplied at 0.5 mg/ml in Tris saline, 0.02% sodium azide, pH7.3 with 0.5% bovine serum albumin.

Aliquot and store at -20°C. Minimize freezing and thawing.

### Applications Tested

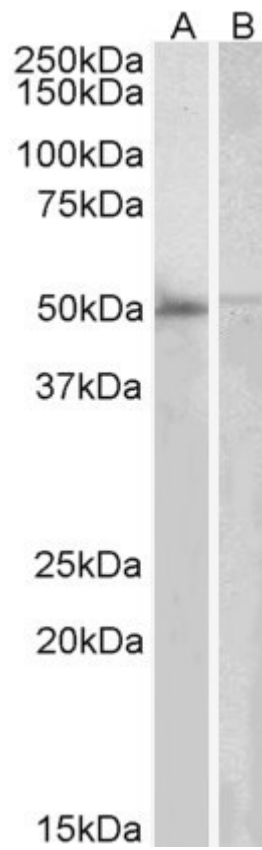
**Peptide ELISA:** antibody detection limit dilution 1:128000.

**Western blot:** Approx 50kDa band observed in Human Bone marrow and Human Peripheral Blood Mononucleocytes lysates (calculated MW of 50.3kDa according to NP\_079148.2). Recommended concentration: 2-6µg/ml.

### Species Reactivity

**Tested:** Human

**Expected from sequence similarity:** Human, Mouse, Rat, Cow



EB05210 (2 $\mu$ g/ml) staining of Human Bone Marrow (A) and PBL (B) lysates (35 $\mu$ g protein in RIPA buffer). Primary incubation was 1 hour. Detected by chemiluminescence.