



UK Office

Everest Biotech Ltd

Cherwell Innovation Centre
77 Heyford Park
Upper Heyford
Oxfordshire
OX25 5HD
UK

Enquiries:

info@everestbiotech.com

Sales:

sales@everestbiotech.com

Tech support:

support@everestbiotech.com

Tel: +44 (0)1869 238326

Fax: +44 (0)1869 238327

US Office

Everest Biotech c/o Abcore

405 Maple Street, Suite A106
Ramona,
CA 92065
USA

Inquiries:

info@everestbiotech.com

Sales:

usasales@everestbiotech.com

Tech support:

support@everestbiotech.com

Tel: 888-320-4628 (toll-free)

Fax: 888-841-9041

www.everestbiotech.com

**Research Use Only. Not for
diagnostic or therapeutic use.**

EB10781 - Goat Anti-Doublecortin / DCX (aa232-242) Antibody

Size: 100µg specific antibody in 200µl



Target Protein

Principal Names: DCX, doublecortin, RP5-914P14.1, DBCN, DC, FLJ51296, LISX, SCLH, XLIS, OTTHUMP00000216316, doublecortex, doublin, lis-X, lissencephalin-X, neuronal migration protein doublecortin

Official Symbol: DCX

Accession Number(s): NP_000546.2; NP_835365.1; NP_835364.1; NP_001182482.1

Human GeneID(s): [1641](#)

Non-Human GeneID(s): 13193 (mouse), 84394 (rat)

Important Comments: This antibody is expected to recognize all four reported isoforms (NP_000546.2; NP_835365.1; NP_835364.1; NP_001182482.1). Reported variants represent identical protein: NP_835364.1 and NP_835366.1.

Immunogen

Peptide with sequence C-KTSANMKAPQS, from the internal region of the protein sequence according to NP_000546.2; NP_835365.1; NP_835364.1; NP_001182482.1.

Please note the [peptide](#) is available for sale.

Purification and Storage

Purified from goat serum by ammonium sulphate precipitation followed by antigen affinity chromatography using the immunizing peptide.

Supplied at 0.5 mg/ml in Tris saline, 0.02% sodium azide, pH7.3 with 0.5% bovine serum albumin.

Aliquot and store at -20°C. Minimize freezing and thawing.

Applications Tested

Peptide ELISA: antibody detection limit dilution 1:128000.

IHC: Paraffin embedded Human Brain (Cortex) and Testis. Recommended concentration: 5-6µg/ml.

Immunofluorescence: Strong expression of the protein seen in the cytoplasm of HepG2 and KNRK cells. Recommended concentration: 10µg/ml.

Species Reactivity

Tested: Human, Rat

Expected from sequence similarity: Human, Mouse, Rat, Dog, Pig, Cow

Specific Reference

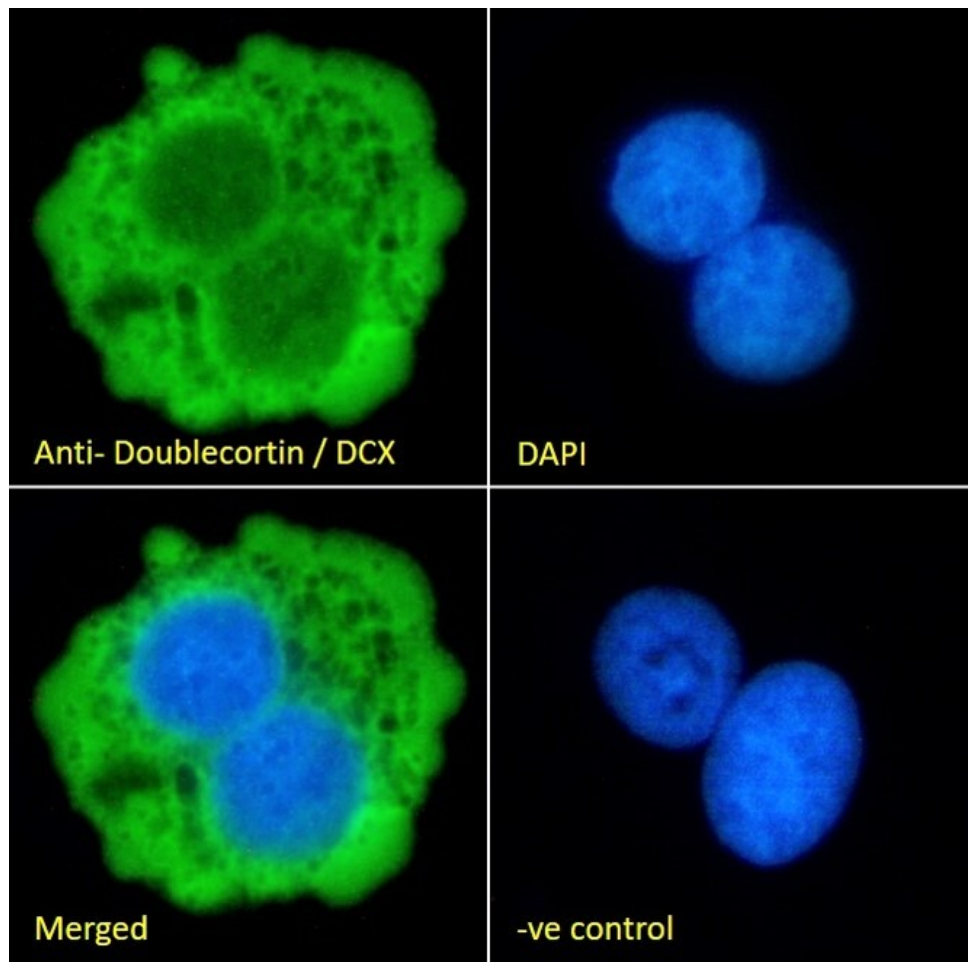
This antibody (previous batch) has been successfully used in IHC on Rat:

Heysieattalab, S., Sadeghi

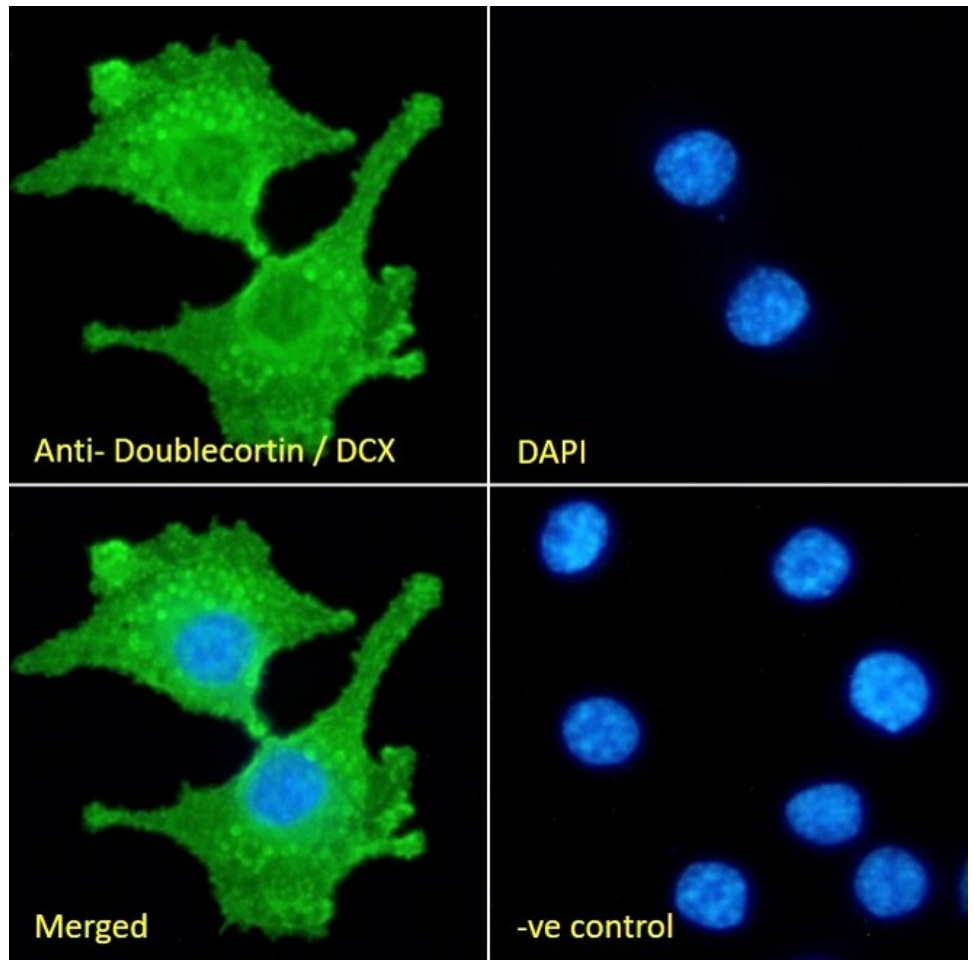
Dynamic structural neuroplasticity during and after epileptogenesis in a pilocarpine rat model of epilepsy

Acta Epileptologica 3, 3 (2021). <https://doi.org/10.1186/s42494-020-00037-7>

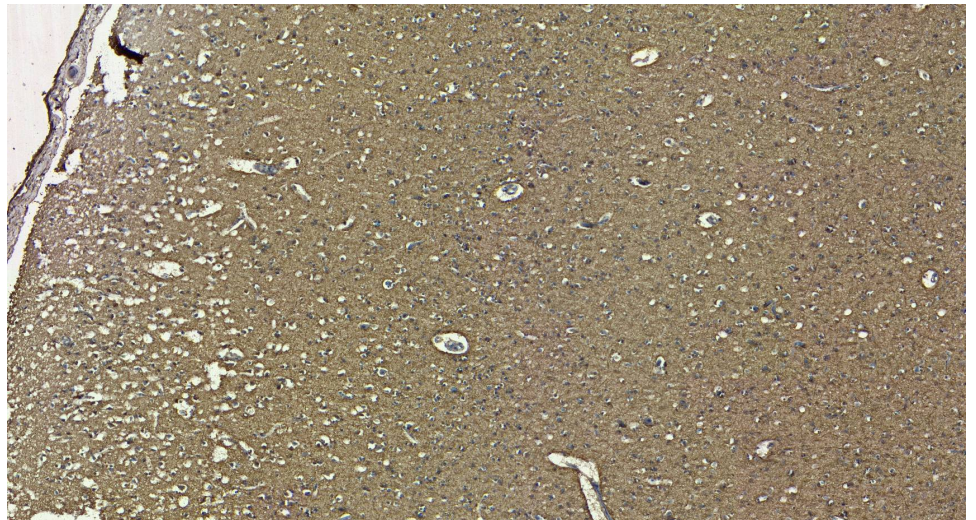
PMID: 0



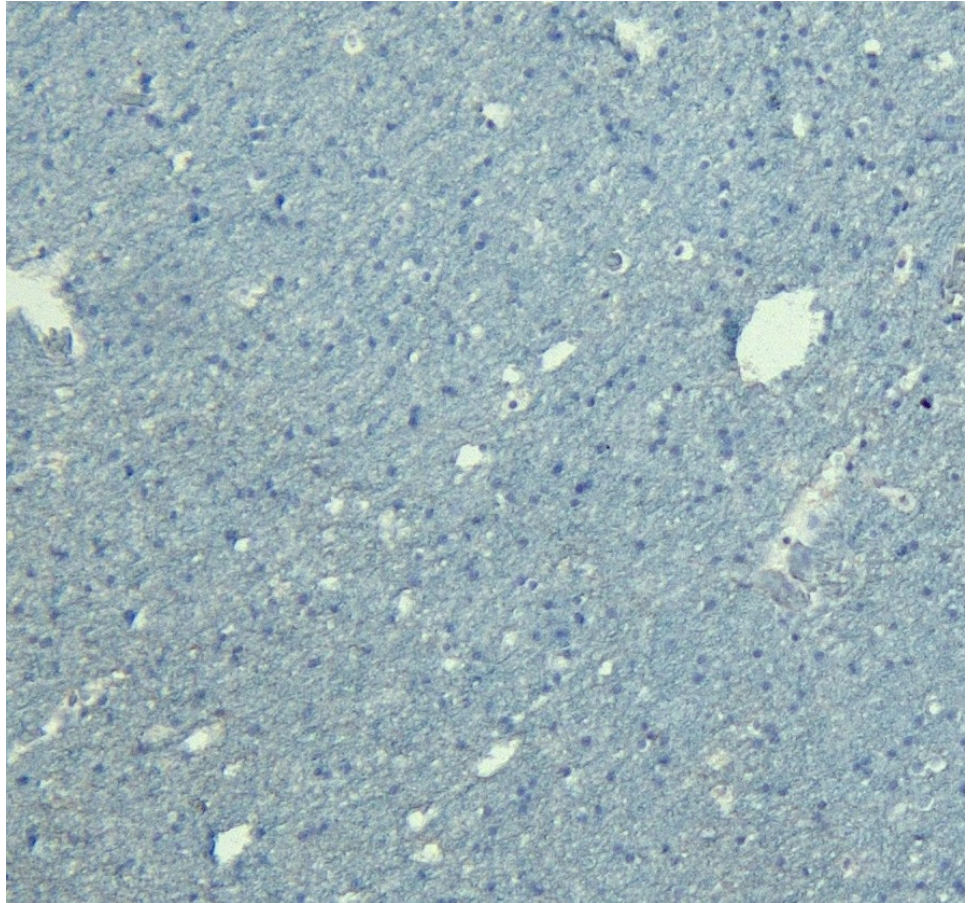
EB10781 Immunofluorescence analysis of paraformaldehyde fixed HepG2 cells, permeabilized with 0.15% Triton. Primary incubation 1hr (10ug/ml) followed by Alexa Fluor 488 secondary antibody (2ug/ml), showing cytoplasmic staining. The nuclear stain is DAPI (blue). Negative control: Unimmunized goat IgG (10ug/ml) followed by Alexa Fluor 488 secondary antibody (2ug/ml).



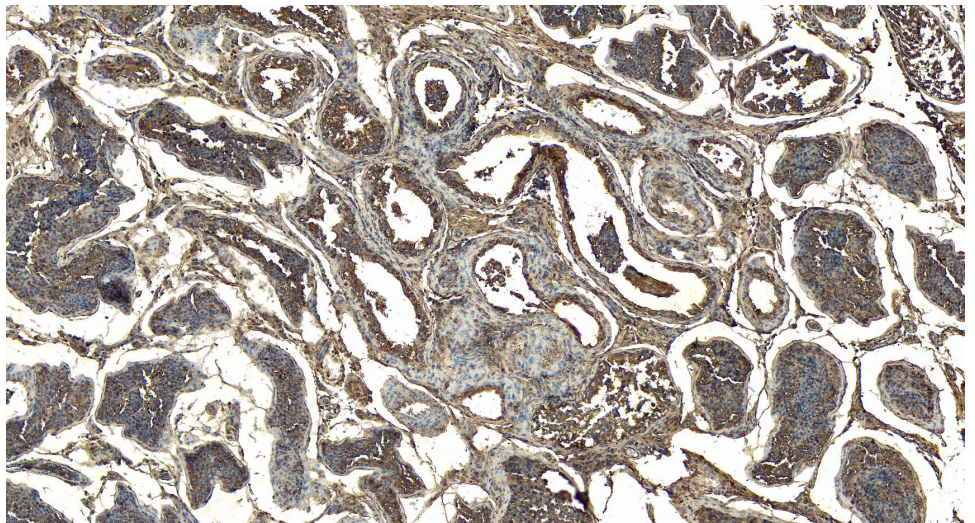
EB10781 Immunofluorescence analysis of paraformaldehyde fixed KNRK cells, permeabilized with 0.15% Triton. Primary incubation 1hr (10ug/ml) followed by Alexa Fluor 488 secondary antibody (2ug/ml), showing cytoplasmic staining. The nuclear stain is DAPI (blue). Negative control: Unimmunized goat IgG (10ug/ml) followed by Alexa Fluor 488 secondary antibody (2ug/ml).



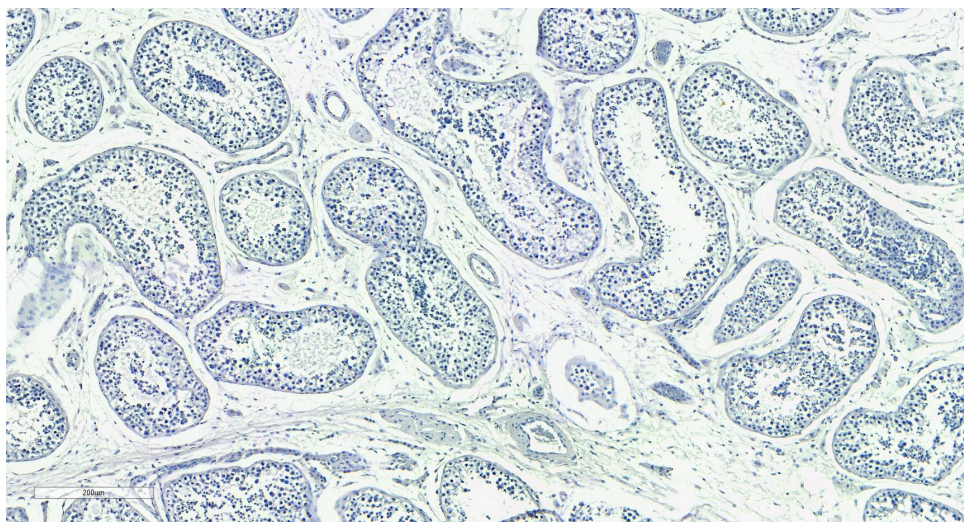
EB10781 (5µg/ml) staining of paraffin embedded Human Cortex. Heat induced antigen retrieval with citrate buffer Ph 6, HRP-staining.



EB10781 Negative Control showing staining of paraffin embedded Human Cortex, with no primary antibody.



EB10781 (6 μ g/ml) staining of paraffin embedded Human Testis. Heat induced antigen retrieval with citrate buffer Ph 6, HRP-staining.



EB10781 Negative Control showing staining of paraffin embedded Human Testis with no primary antibody.