



UK Office

Everest Biotech Ltd

Cherwell Innovation Centre
77 Heyford Park
Upper Heyford
Oxfordshire
OX25 5HD
UK

Enquiries:

info@everestbiotech.com

Sales:

sales@everestbiotech.com

Tech support:

support@everestbiotech.com

Tel: +44 (0)1869 238326

Fax: +44 (0)1869 238327

US Office

Everest Biotech c/o Abcore

405 Maple Street, Suite A106
Ramona,
CA 92065
USA

Inquiries:

info@everestbiotech.com

Sales:

usasales@everestbiotech.com

Tech support:

support@everestbiotech.com

Tel: 888-320-4628 (toll-free)

Fax: 888-841-9041

www.everestbiotech.com

**Research Use Only. Not for
diagnostic or therapeutic use.**

EB11639 - Goat Anti-Doublecortin (mouse) Antibody

Size: 100µg specific antibody in 200µl



Target Protein

Principal Names: Dbct, Dcx, doublecortex, doublecortin, doublin, lissencephalin-X, lissencephaly, X-linked (doublecortin), lis-X, neuronal migration protein doublecortin, OTTMUSP00000020394, OTTMUSP00000020395, OTTMUSP00000020396, OTTMUSP00000020397

Official Symbol: Dcx

Accession Number(s): NP_001103692.1; NP_001103694.1; NP_034155.2

Human GeneID(s): [1641](#)

Non-Human GeneID(s): 13193 (mouse), 84394 (rat)

Important Comments: This antibody is expected to recognize all reported mouse isoforms (NP_001103692.1; NP_001103694.1; NP_034155.2). Reported variants represent identical protein: NP_001103692.1, NP_001103693.1

Immunogen

Peptide with sequence C-PKASPTPQKTSKAS, from the internal region of the protein sequence according to NP_001103692.1; NP_001103694.1; NP_034155.2.

Please note the [peptide](#) is available for sale.

Purification and Storage

Purified from goat serum by ammonium sulphate precipitation followed by antigen affinity chromatography using the immunizing peptide.

Supplied at 0.5 mg/ml in Tris saline, 0.02% sodium azide, pH7.3 with 0.5% bovine serum albumin.

Aliquot and store at -20°C. Minimize freezing and thawing.

Applications Tested

Peptide ELISA: antibody detection limit dilution 1:128000.

Western blot: Approx 40kDa band observed in Mouse fetal Brain lysates (calculated MW of 40.6kDa according to NP_001103692.1). Recommended concentration: 0.5-2µg/ml.

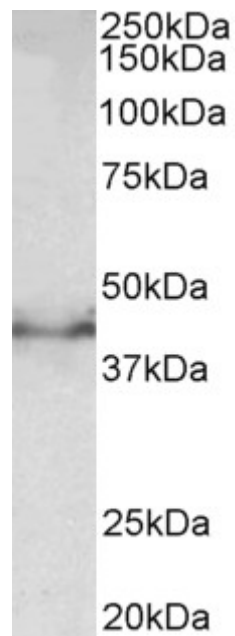
Primary incubation was 1 hour.

Immunofluorescence: Strong expression of the protein seen in the cytoplasm of HepG2 cells. Recommended concentration: 5µg/ml

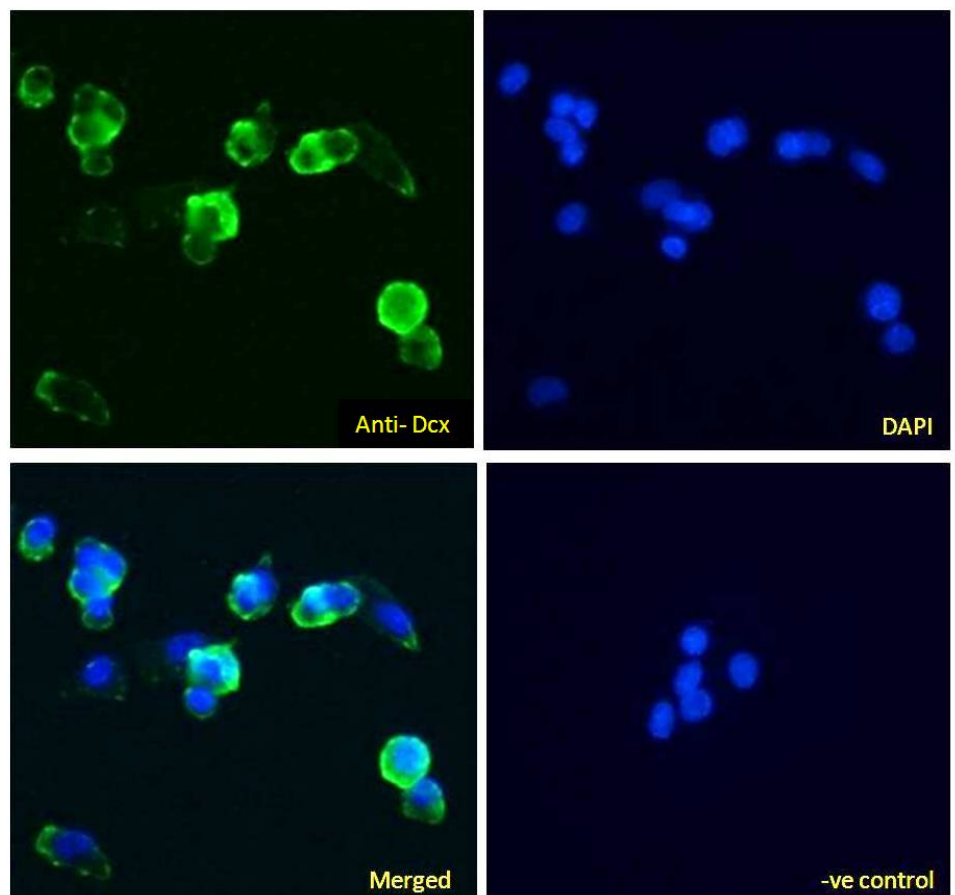
Species Reactivity

Tested: Human, Mouse

Expected from sequence similarity: Human, Mouse, Rat



EB11639 (0.5µg/ml) staining of Mouse fetal Brain lysate (35µg protein in RIPA buffer). Detected by chemiluminescence.



EB11639 Immunofluorescence analysis of paraformaldehyde fixed HepG2 cells, permeabilized with 0.15% Triton. Primary incubation 1hr (5ug/ml) followed by Alexa Fluor 488 secondary antibody (1ug/ml), showing cytoplasmic staining. The nuclear stain is DAPI (blue). Negative control: Unimmunized goat IgG (10ug/ml) followed by Alexa Fluor 488 secondary antibody (1ug/ml).