



UK Office

Everest Biotech Ltd

Cherwell Innovation Centre
77 Heyford Park
Upper Heyford
Oxfordshire
OX25 5HD
UK

Enquiries:

info@everestbiotech.com

Sales:

sales@everestbiotech.com

Tech support:

support@everestbiotech.com

Tel: +44 (0)1869 238326

www.everestbiotech.com

**Research Use Only. Not for
diagnostic or therapeutic use.**

EB08942 - Goat Anti-DPM1 Antibody

Size: 100µg specific antibody in 200µl



Target Protein

Principal Names: DPM1, dolichyl-phosphate mannosyltransferase polypeptide 1, catalytic subunit, CDGIE, MPDS, dolichol monophosphate mannose synthase, dolichyl-phosphate mannosyltransferase polypeptide 1

Official Symbol: DPM1

Accession Number(s): NP_003850.1

Human GeneID(s): [8813](#)

Immunogen

Peptide with sequence RELEVRSPRQNKYS-C, from the N Terminus of the protein sequence according to NP_003850.1.

Please note the [peptide](#) is available for sale.

Purification and Storage

Purified from goat serum by ammonium sulphate precipitation followed by antigen affinity chromatography using the immunizing peptide.

Supplied at 0.5 mg/ml in Tris saline, 0.02% sodium azide, pH7.3 with 0.5% bovine serum albumin.

Aliquot and store at -20°C. Minimize freezing and thawing.

Applications Tested

Peptide ELISA: antibody detection limit dilution 1:32000.

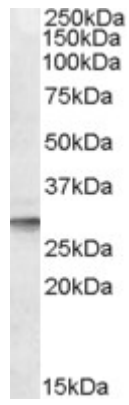
Western blot: Approx. 28kDa band observed in Human Liver lysates (calculated MW of 29.6kDa according to NP_003850.1). Recommended concentration: 0.1-0.3µg/ml. Primary incubation was 1 hour.

IHC: Paraffin embedded Human Tonsil. Recommended concentration: 3.75µg/ml.

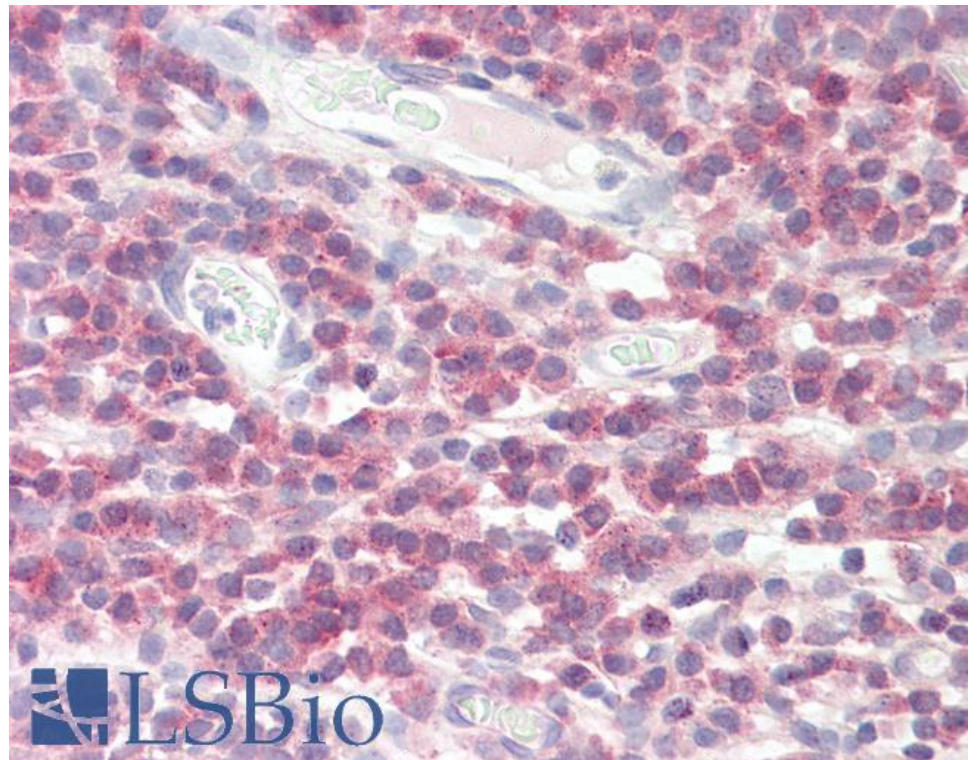
Species Reactivity

Tested: Human

Expected from sequence similarity: Human



EB08942 (0.1 μ g/ml) staining of Human Liver lysate (35 μ g protein in RIPA buffer). Detected by chemiluminescence.



EB08942 (3.75 μ g/ml) staining of paraffin embedded Human Tonsil. Steamed antigen retrieval with citrate buffer pH 6, AP-staining.