



## UK Office

### Everest Biotech Ltd

Cherwell Innovation Centre  
77 Heyford Park  
Upper Heyford  
Oxfordshire  
OX25 5HD  
UK

Enquiries:

[info@everestbiotech.com](mailto:info@everestbiotech.com)

Sales:

[sales@everestbiotech.com](mailto:sales@everestbiotech.com)

Tech support:

[support@everestbiotech.com](mailto:support@everestbiotech.com)

Tel: +44 (0)1869 238326

[www.everestbiotech.com](http://www.everestbiotech.com)

**Research Use Only. Not for  
diagnostic or therapeutic use.**

## EB08946 - Goat Anti-DPM3 Antibody

Size: 100µg specific antibody in 200µl



### Target Protein

**Principal Names:** DPM3, dolichyl-phosphate mannosyltransferase polypeptide 3, MGC125904, MGC125905, MGC34275, dolichol-phosphate mannose synthase subunit 3, dolichyl-phosphate beta-D-mannosyltransferase subunit 3, mannose-P-dolichol synthase subunit 3, prostin 1

**Official Symbol:** DPM3

**Accession Number(s):** NP\_061846.2; NP\_714963.1

**Human GeneID(s):** [54344](#)

**Important Comments:** This antibody is expected to recognize both reported isoforms (NP\_061846.2 and NP\_714963.1).

### Immunogen

Peptide with sequence HDCEDAARELQSQ, from the internal region of the protein sequence according to NP\_061846.2; NP\_714963.1.

Please note the [peptide](#) is available for sale.

### Purification and Storage

Purified from goat serum by ammonium sulphate precipitation followed by antigen affinity chromatography using the immunizing peptide.

Supplied at 0.5 mg/ml in Tris saline, 0.02% sodium azide, pH7.3 with 0.5% bovine serum albumin.

Aliquot and store at -20°C. Minimize freezing and thawing.

### Applications Tested

**Peptide ELISA:** antibody detection limit dilution 1:1000.

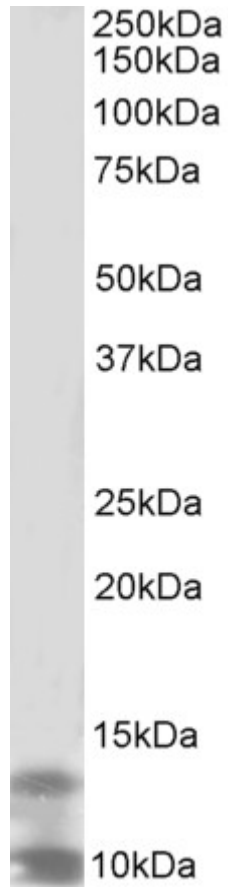
**Western blot:** Approx 10+13kDa bands observed in lysates of cell line K562 (calculated MW of 13.3kDa according to NP\_061846.2 and 10.1kDa according to NP\_714963.1).

Recommended concentration: 1-3µg/ml.

### Species Reactivity

**Tested:** Human

**Expected from sequence similarity:** Human, Mouse, Rat, Dog, Cow, Pig



EB08946 (2 $\mu$ g/ml) staining of K562 lysate (35 $\mu$ g protein in RIPA buffer). Primary incubation was 1 hour.  
Detected by chemiluminescence.