



## UK Office

### Everest Biotech Ltd

Cherwell Innovation Centre  
77 Heyford Park  
Upper Heyford  
Oxfordshire  
OX25 5HD  
UK

Enquiries:

[info@everestbiotech.com](mailto:info@everestbiotech.com)

Sales:

[sales@everestbiotech.com](mailto:sales@everestbiotech.com)

Tech support:

[support@everestbiotech.com](mailto:support@everestbiotech.com)

Tel: +44 (0)1869 238326

[www.everestbiotech.com](http://www.everestbiotech.com)

**Research Use Only. Not for  
diagnostic or therapeutic use.**

## EB07835-T - Goat Anti-DPP4 / CD26 Antibody - Trial

Size: 20µg specific antibody in 40µl



### Target Protein

**Principal Names:** DPP4, CD26, dipeptidyl-peptidase 4 (CD26, adenosine deaminase complexing protein 2), ADABP, ADCP2, DPPIV, TP103, T-cell activation antigen CD26, adenosine deaminase complexing protein 2, dipeptidylpeptidase 4 (CD26, adenosine deaminase complexing protein 2), dipeptidylpeptidase IV, dipeptidylpeptidase IV (CD26, adenosine deaminase complexing protein 2)

**Official Symbol:** DPP4

**Accession Number(s):** NP\_001926.2

**Human GeneID(s):** [1803](#)

**Non-Human GeneID(s):** 13482 (mouse), 25253 (rat)

### Immunogen

Peptide with sequence C-PPHFDKSKKYP, from the internal region of the protein sequence according to NP\_001926.2.

Please note the [peptide](#) is available for sale.

### Purification and Storage

Purified from goat serum by ammonium sulphate precipitation followed by antigen affinity chromatography using the immunizing peptide.

Supplied at 0.5 mg/ml in Tris saline, 0.02% sodium azide, pH7.3 with 0.5% bovine serum albumin.

Aliquot and store at -20°C. Minimize freezing and thawing.

### Applications Tested

**Peptide ELISA:** antibody detection limit dilution 1:64000.

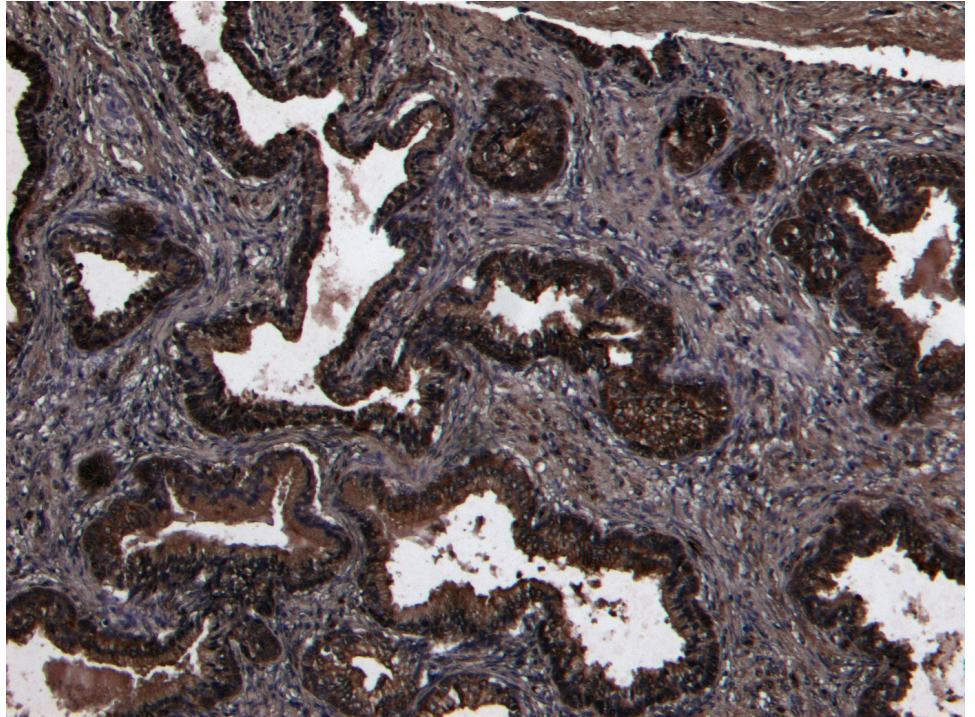
**IHC:** Paraffin embedded Human Prostate. Recommended concentration: 8µg/ml.

**Flow Cytometry:** Flow cytometric analysis of HepG2 cells. Recommended concentration: 10ug/ml.

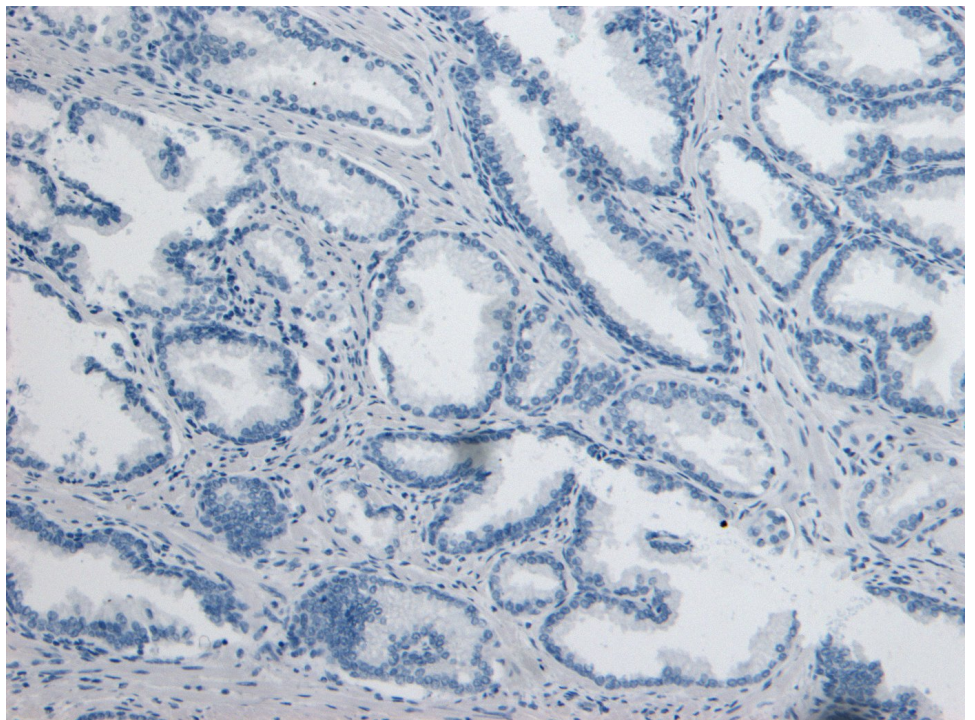
### Species Reactivity

**Tested:** Human

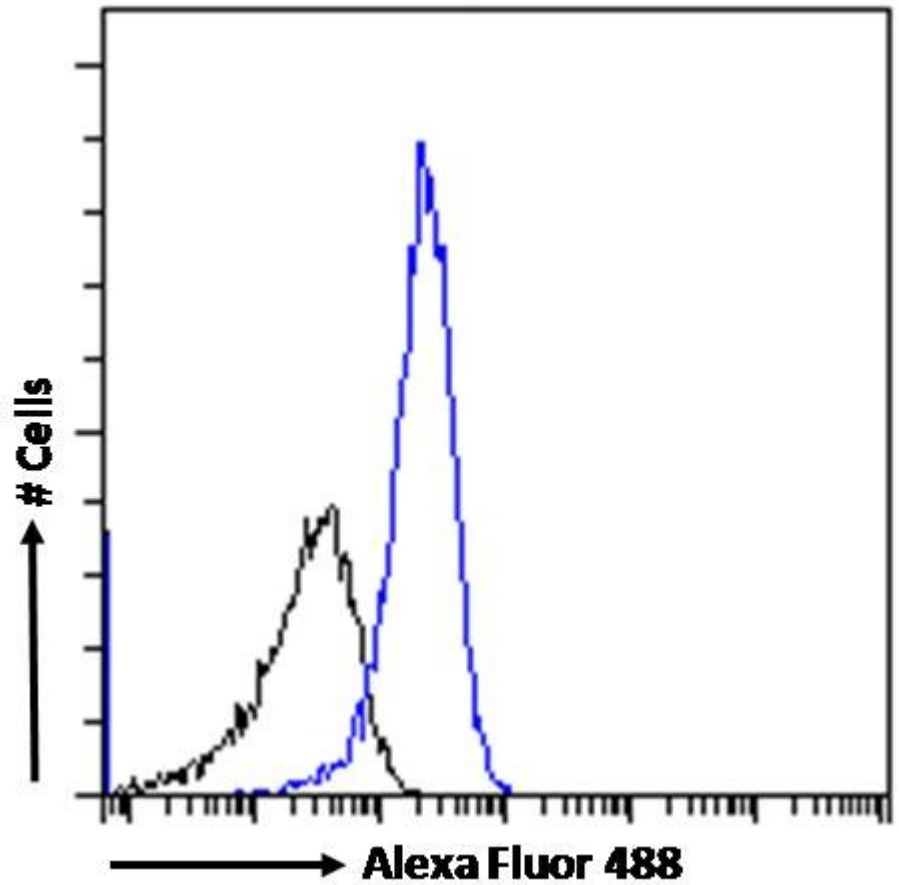
**Expected from sequence similarity:** Human, Mouse, Rat



EB07835 (8µg/ml) staining of paraffin embedded Human Prostate. Heat induced antigen retrieval with citrate buffer pH 6, HRP-staining.



EB07835 Negative Control showing staining of paraffin embedded Human Prostate, with no primary antibody.



EB07835 Flow cytometric analysis of paraformaldehyde fixed HepG2 cells (blue line), permeabilized with 0.5% Triton. Primary incubation 1hr (10ug/ml) followed by Alexa Fluor 488 secondary antibody (1ug/ml). IgG control: Unimmunized goat IgG (black line) followed by Alexa Fluor 488 secondary antibody.