

UK Office

Everest Biotech Ltd

Cherwell Innovation Centre
77 Heyford Park
Upper Heyford
Oxfordshire
OX25 5HD
UK

Enquiries:

info@everestbiotech.com

Sales:

sales@everestbiotech.com

Tech support:

support@everestbiotech.com

Tel: +44 (0)1869 238326

www.everestbiotech.com

**Research Use Only. Not for
diagnostic or therapeutic use.**

EB07835 - Goat Anti-DPP4 / CD26 Antibody

Size: 100µg specific antibody in 200µl



Target Protein

Principal Names: DPP4, CD26, dipeptidyl-peptidase 4 (CD26, adenosine deaminase complexing protein 2), ADABP, ADCP2, DPP4, TP103, T-cell activation antigen CD26, adenosine deaminase complexing protein 2, dipeptidylpeptidase 4 (CD26, adenosine deaminase complexing protein 2), dipeptidylpeptidase IV, dipeptidylpeptidase IV (CD26, adenosine deaminase complexing protein 2)

Official Symbol: DPP4

Accession Number(s): NP_001926.2

Human GeneID(s): [1803](#)

Non-Human GeneID(s): 13482 (mouse), 25253 (rat)

Immunogen

Peptide with sequence C-PPHFDKSKKYP, from the internal region of the protein sequence according to NP_001926.2.

Please note the [peptide](#) is available for sale.

Purification and Storage

Purified from goat serum by ammonium sulphate precipitation followed by antigen affinity chromatography using the immunizing peptide.

Supplied at 0.5 mg/ml in Tris saline, 0.02% sodium azide, pH7.3 with 0.5% bovine serum albumin.

Aliquot and store at -20°C. Minimize freezing and thawing.

Applications Tested

Peptide ELISA: antibody detection limit dilution 1:64000.

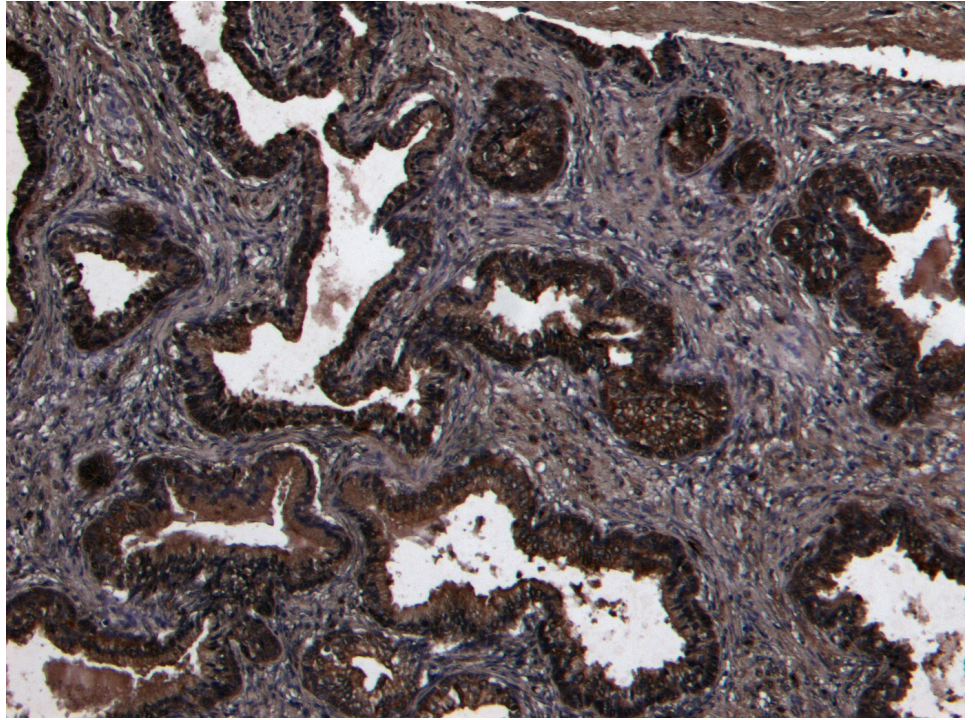
IHC: Paraffin embedded Human Prostate. Recommended concentration: 8µg/ml.

Flow Cytometry: Flow cytometric analysis of HepG2 cells. Recommended concentration: 10ug/ml.

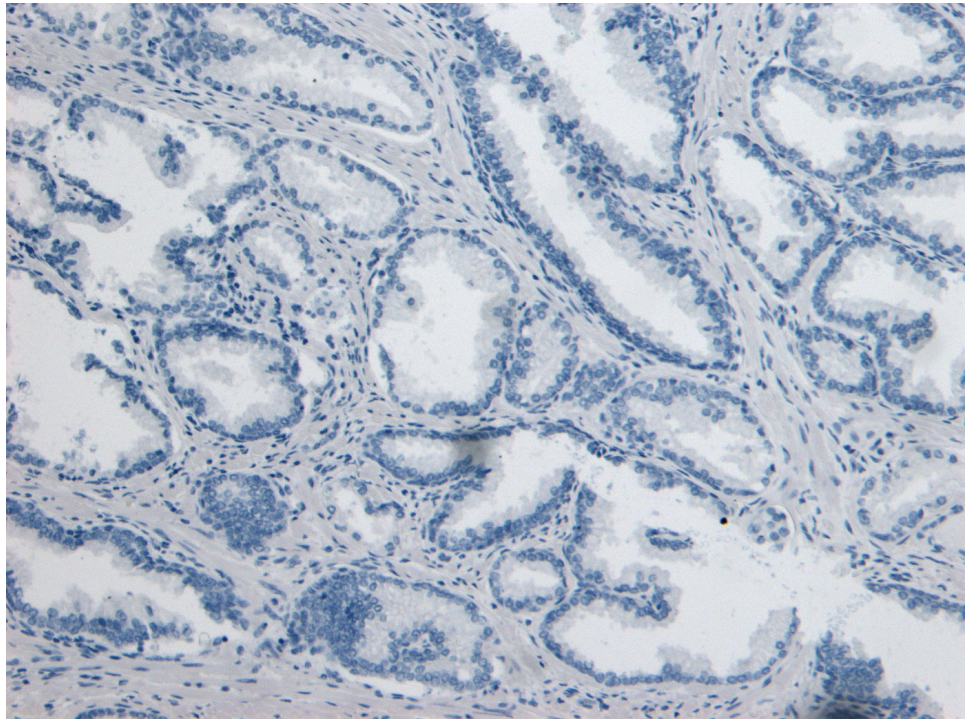
Species Reactivity

Tested: Human

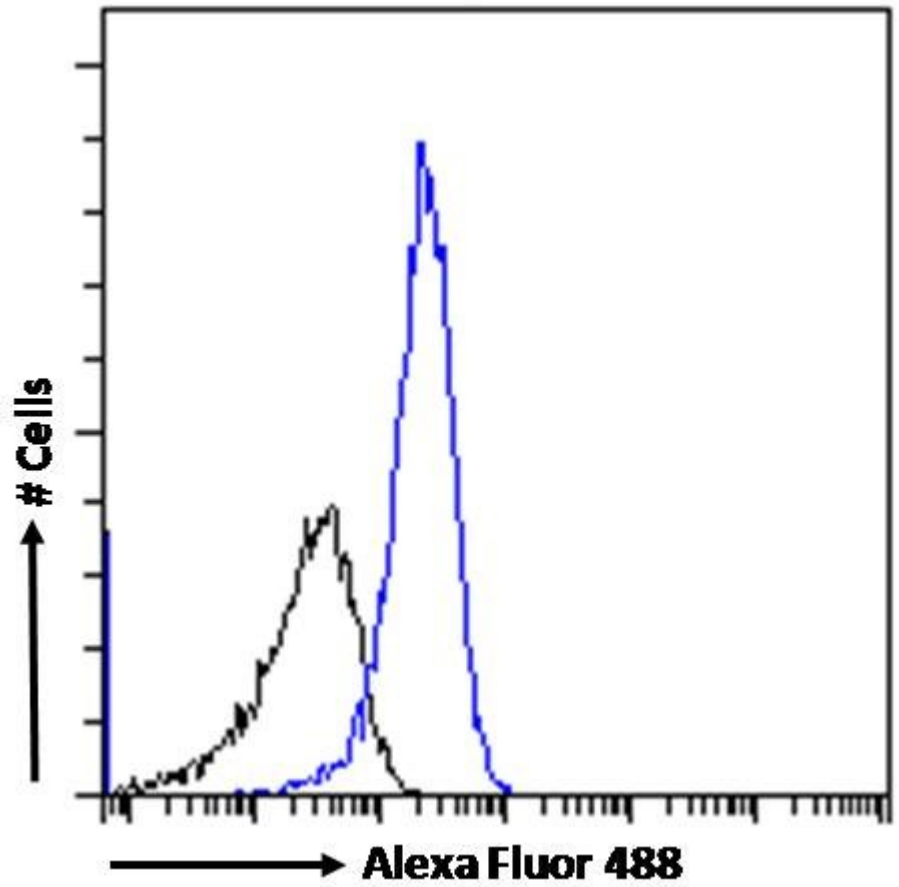
Expected from sequence similarity: Human, Mouse, Rat



EB07835 (8µg/ml) staining of paraffin embedded Human Prostate. Heat induced antigen retrieval with citrate buffer pH 6, HRP-staining.



EB07835 Negative Control showing staining of paraffin embedded Human Prostate, with no primary antibody.



EB07835 Flow cytometric analysis of paraformaldehyde fixed HepG2 cells (blue line), permeabilized with 0.5% Triton. Primary incubation 1hr (10ug/ml) followed by Alexa Fluor 488 secondary antibody (1ug/ml). IgG control: Unimmunized goat IgG (black line) followed by Alexa Fluor 488 secondary antibody.