



## EB07835 - Goat Anti-DPP4 / CD26 Antibody

Size: 100µg specific antibody in 200µl



### UK Office

#### Everest Biotech Ltd

Cherwell Innovation Centre  
77 Heyford Park  
Upper Heyford  
Oxfordshire  
OX25 5HD  
UK

Enquiries:

[info@everestbiotech.com](mailto:info@everestbiotech.com)

Sales:

[sales@everestbiotech.com](mailto:sales@everestbiotech.com)

Tech support:

[support@everestbiotech.com](mailto:support@everestbiotech.com)

Tel: +44 (0)1869 238326

Fax: +44 (0)1869 238327

### US Office

#### Everest Biotech c/o Abcore

405 Maple Street, Suite A106  
Ramona,  
CA 92065  
USA

Inquiries:

[info@everestbiotech.com](mailto:info@everestbiotech.com)

Sales:

[usasales@everestbiotech.com](mailto:usasales@everestbiotech.com)

Tech support:

[support@everestbiotech.com](mailto:support@everestbiotech.com)

Tel: 888-320-4628 (toll-free)

Fax: 888-841-9041

[www.everestbiotech.com](http://www.everestbiotech.com)

**Research Use Only. Not for diagnostic or therapeutic use.**

### Target Protein

**Principal Names:** DPP4, CD26, dipeptidyl-peptidase 4 (CD26, adenosine deaminase complexing protein 2), ADABP, ADCP2, DPP4, TP103, T-cell activation antigen CD26, adenosine deaminase complexing protein 2, dipeptidylpeptidase 4 (CD26, adenosine deaminase complexing protein 2), dipeptidylpeptidase IV, dipeptidylpeptidase IV (CD26, adenosine deaminase complexing protein 2)

**Official Symbol:** DPP4

**Accession Number(s):** NP\_001926.2

**Human GeneID(s):** [1803](#)

**Non-Human GeneID(s):** 13482 (mouse), 25253 (rat)

### Immunogen

Peptide with sequence C-PPHFDKSKKYP, from the internal region of the protein sequence according to NP\_001926.2.

Please note the [peptide](#) is available for sale.

### Purification and Storage

Purified from goat serum by ammonium sulphate precipitation followed by antigen affinity chromatography using the immunizing peptide.

Supplied at 0.5 mg/ml in Tris saline, 0.02% sodium azide, pH7.3 with 0.5% bovine serum albumin.

Aliquot and store at -20°C. Minimize freezing and thawing.

### Applications Tested

**Peptide ELISA:** antibody detection limit dilution 1:64000.

**Western blot:** Approx 110kDa band observed in Rat Lung lysates (calculated MW of 88.3Da according to NP\_001926.2). The observed molecular weight of this glycoprotein corresponds to earlier findings in literature with different antibodies (Herrera et al, J Biol Chem. 2001 Jun 1;276(22):19532-9.; PMID: 11278278). Recommended concentration: 0.3-1µg/ml. Primary incubation was 1 hour. Preliminary testing was unsuccessful on Mouse for this particular batch.

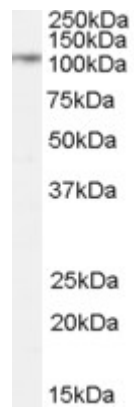
**IHC:** Paraffin embedded Human Prostate. Recommended concentration: 8µg/ml.

**Flow Cytometry:** Flow cytometric analysis of HepG2 cells. Recommended concentration: 10ug/ml.

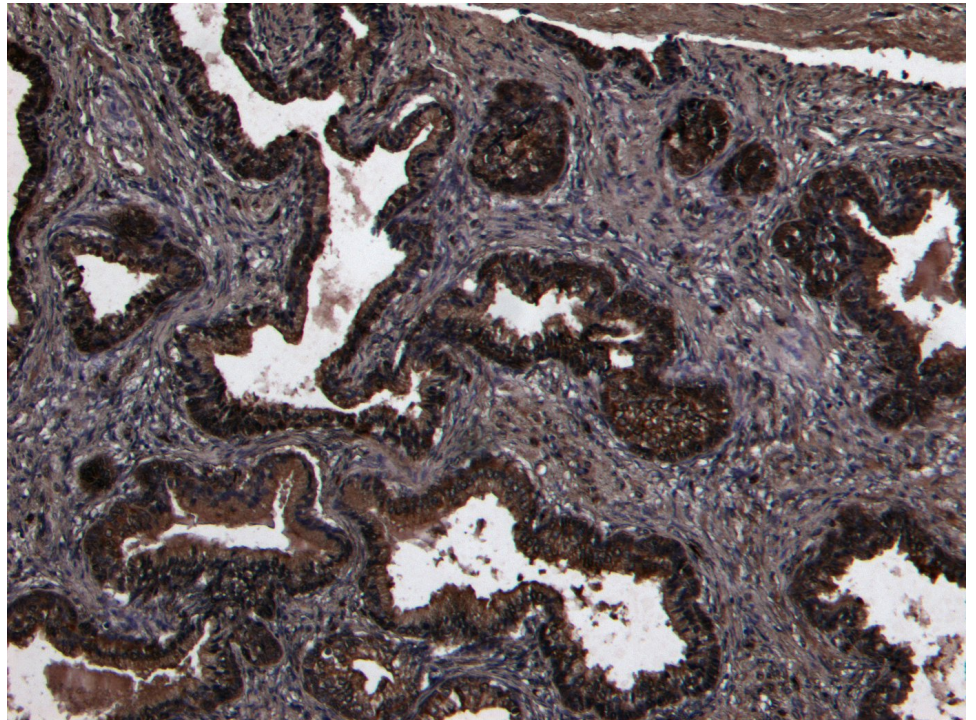
### Species Reactivity

**Tested:** Human, Rat

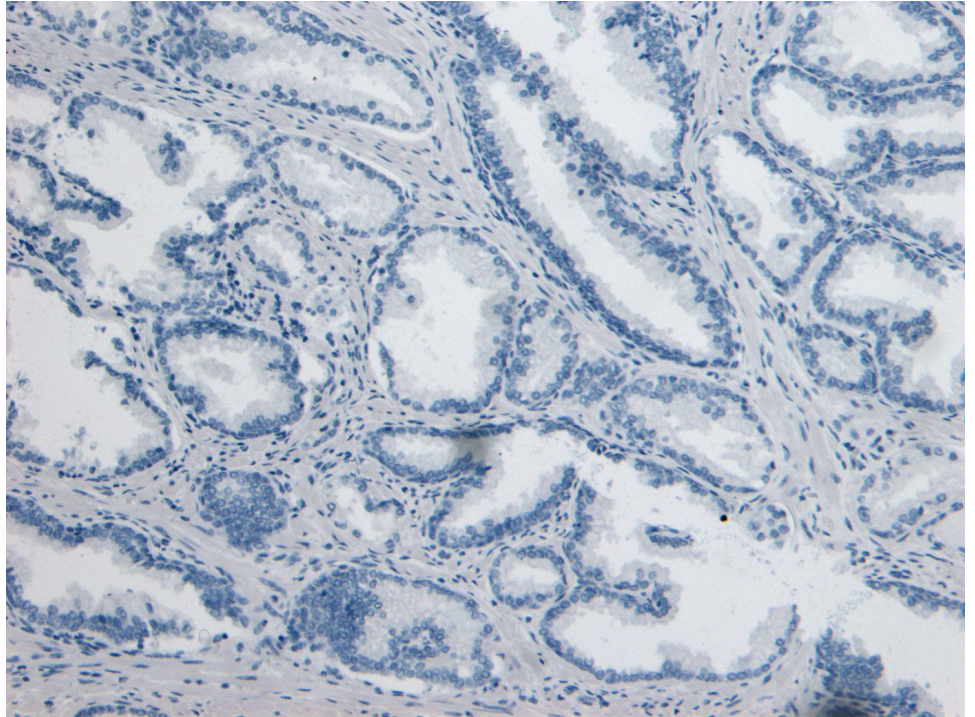
**Expected from sequence similarity:** Human, Mouse, Rat



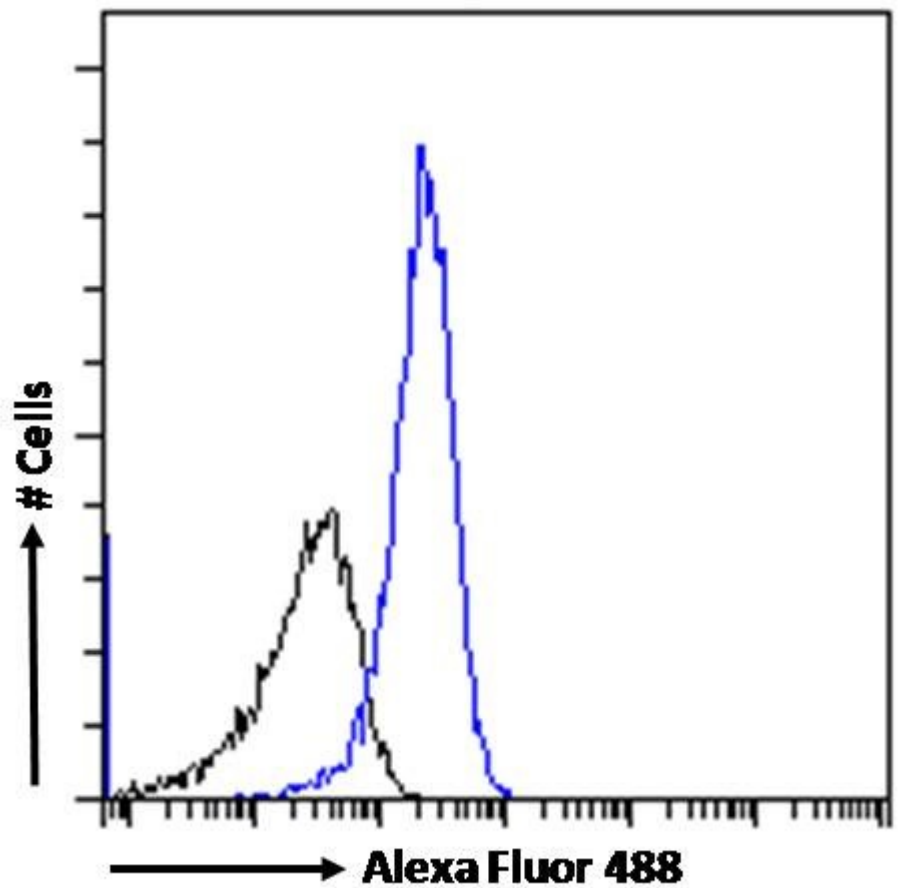
EB07835 (0.3 $\mu$ g/ml) staining of Rat Lung lysate (35 $\mu$ g protein in RIPA buffer). Detected by chemiluminescence.



EB07835 (8 $\mu$ g/ml) staining of paraffin embedded Human Prostate. Heat induced antigen retrieval with citrate buffer pH 6, HRP-staining.



EB07835 Negative Control showing staining of paraffin embedded Human Prostate, with no primary antibody.



EB07835 Flow cytometric analysis of paraformaldehyde fixed HepG2 cells (blue line), permeabilized with 0.5% Triton. Primary incubation 1hr (10ug/ml) followed by Alexa Fluor 488 secondary antibody (1ug/ml). IgG control: Unimmunized goat IgG (black line) followed by Alexa Fluor 488 secondary antibody.