



UK Office

Everest Biotech Ltd

Cherwell Innovation Centre
77 Heyford Park
Upper Heyford
Oxfordshire
OX25 5HD
UK

Enquiries:

info@everestbiotech.com

Sales:

sales@everestbiotech.com

Tech support:

support@everestbiotech.com

Tel: +44 (0)1869 238326

www.everestbiotech.com

**Research Use Only. Not for
diagnostic or therapeutic use.**

EB06940 - Goat Anti-Duffy / FY / DARC Antibody

Size: 100µg specific antibody in 200µl



Target Protein

Principal Names: ACKR1, atypical chemokine receptor 1 (Duffy blood group), CCBP1, CD234, DARC, Dfy, FY, GPD, GpFy, WBCQ1, Duffy antigen chemokine receptor, Duffy blood group antigen, Duffy blood group, atypical chemokine receptor, Duffy blood group, chemokine receptor, Fy glycoprotein, duffy blood group chemokine receptor, glycoprotein D, plasmodium vivax receptor, CTA-134P22.3, HGNC:4035

Official Symbol: ACKR1

Accession Number(s): NP_001116423.1; NP_002027.2

Human GeneID(s): [2532](#)

Important Comments: This antibody is expected to recognize both reported isoforms (NP_001116423.1; NP_002027.2).

Immunogen

Peptide with sequence HRAELSPSTENSSQLDFED-C, from the N Terminus of the protein sequence according to NP_001116423.1; NP_002027.2.

Please note the [peptide](#) is available for sale.

Purification and Storage

Purified from goat serum by ammonium sulphate precipitation followed by antigen affinity chromatography using the immunizing peptide.

Supplied at 0.5 mg/ml in Tris saline, 0.02% sodium azide, pH7.3 with 0.5% bovine serum albumin.

Aliquot and store at -20°C. Minimize freezing and thawing.

Applications Tested

Peptide ELISA: antibody detection limit dilution 1:16000.

Western blot: Approx 37kDa band observed in Human Liver lysates (calculated MW of 35.6kDa according to NP_002027.2). Recommended concentration: 0.3-1µg/ml. Primary incubation was 1 hour.

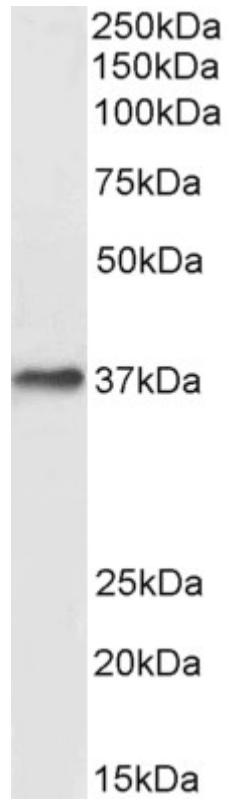
IHC: In paraffin embedded Human Kidney stains epithelial cells of renal tubules and endothelial cells of vessels. The granular staining is compatible with the endoplasmic reticulum association of the protein. Recommended concentration: 3µg/ml. Paraffin embedded Human Lung. Recommended concentration: 5µg/ml.

Flow cytometry: Flow cytometric analysis of HEK293 cells. Recommended concentration: 10ug/ml. A customer has reported successful staining of HEK293S-TetR transfected with DARC receptor at a dilution of 1/1000.

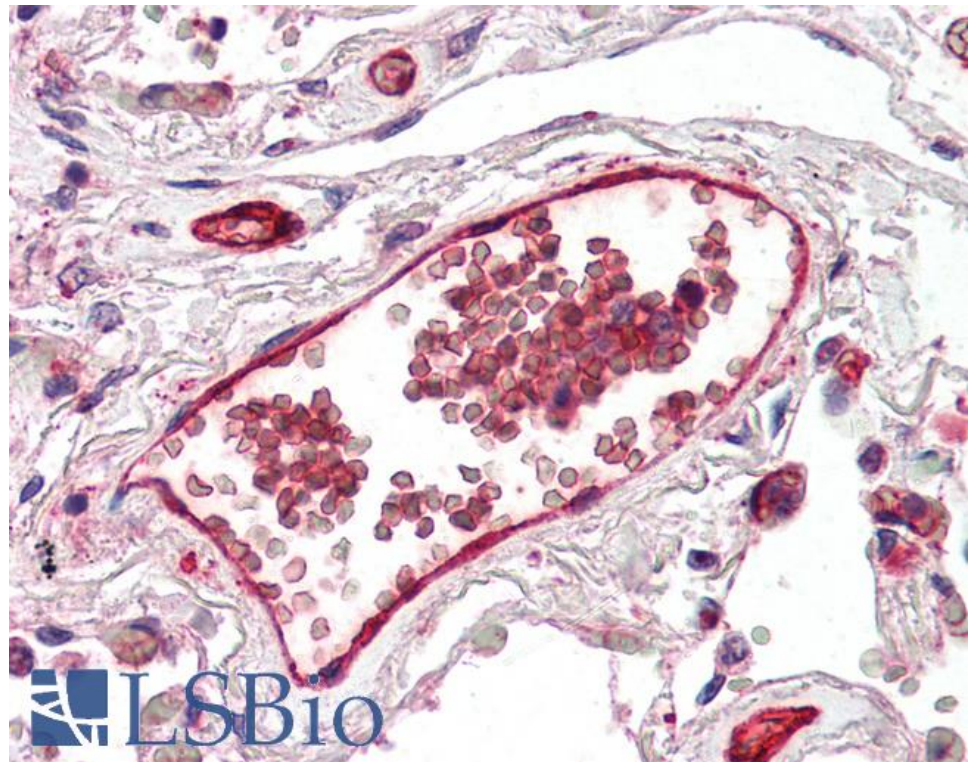
Species Reactivity

Tested: Human

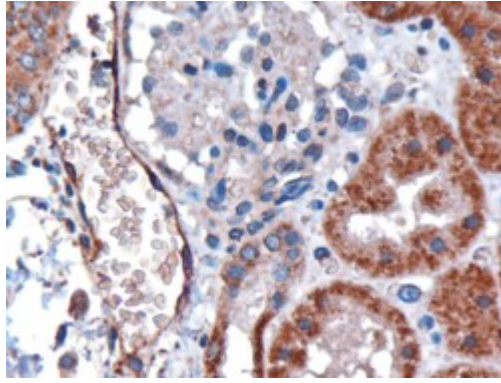
Expected from sequence similarity: Human



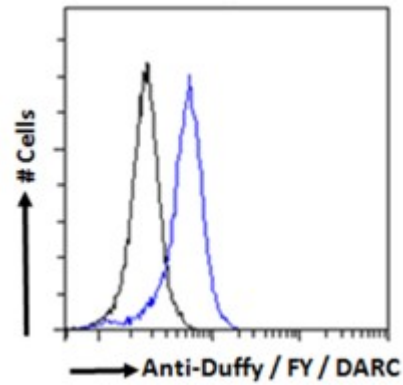
EB06940 (0.3 μ g/ml) staining of Human Liver lysate (35 μ g protein in RIPA buffer). Detected by chemiluminescence.



EB06940 (5 μ g/ml) staining of paraffin embedded Human Lung. Microwaved antigen retrieval with citrate buffer Ph 6, AP-staining.



EB06940 (3 μ g/ml) staining of paraffin embedded Human Kidney. Microwaved antigen retrieval with citrate buffer Ph 6, HRP-staining.



Flow cytometric analysis of paraformaldehyde fixed HEK293 cells (blue line), permeabilized with 0.5% Triton. Primary incubation 1 hr (10 μ g/ml) followed by Alexa Fluor 488 secondary antibody (0.4 μ g/ml). IgG control: Unimmunized goat IgG (black line) followed by Alexa Fluor 488 secondary antibody.