



## UK Office

### Everest Biotech Ltd

Cherwell Innovation Centre  
77 Heyford Park  
Upper Heyford  
Oxfordshire  
OX25 5HD  
UK

Enquiries:

[info@everestbiotech.com](mailto:info@everestbiotech.com)

Sales:

[sales@everestbiotech.com](mailto:sales@everestbiotech.com)

Tech support:

[support@everestbiotech.com](mailto:support@everestbiotech.com)

Tel: +44 (0)1869 238326

[www.everestbiotech.com](http://www.everestbiotech.com)

**Research Use Only. Not for  
diagnostic or therapeutic use.**

## EB05320 - Goat Anti-DUSP14 / MKP6 Antibody

Size: 100µg specific antibody in 200µl



### Target Protein

**Principal Names:** DUSP14, dual specificity phosphatase 14, MKP6, MKP-L, MKP-1 like protein tyrosine phosphatase, OTTHUMP00000164064, OTTHUMP00000164065

**Official Symbol:** DUSP14

**Accession Number(s):** NP\_008957.1

**Human GeneID(s):** [11072](#)

**Non-Human GeneID(s):** 56405 (mouse)

### Immunogen

Peptide with sequence CEKESRHLMPYWGI, from the C Terminus of the protein sequence according to NP\_008957.1.

Please note the [peptide](#) is available for sale.

### Purification and Storage

Purified from goat serum by ammonium sulphate precipitation followed by antigen affinity chromatography using the immunizing peptide.

Supplied at 0.5 mg/ml in Tris saline, 0.02% sodium azide, pH7.3 with 0.5% bovine serum albumin.

Aliquot and store at -20°C. Minimize freezing and thawing.

### Applications Tested

**Peptide ELISA:** antibody detection limit dilution 1:32000.

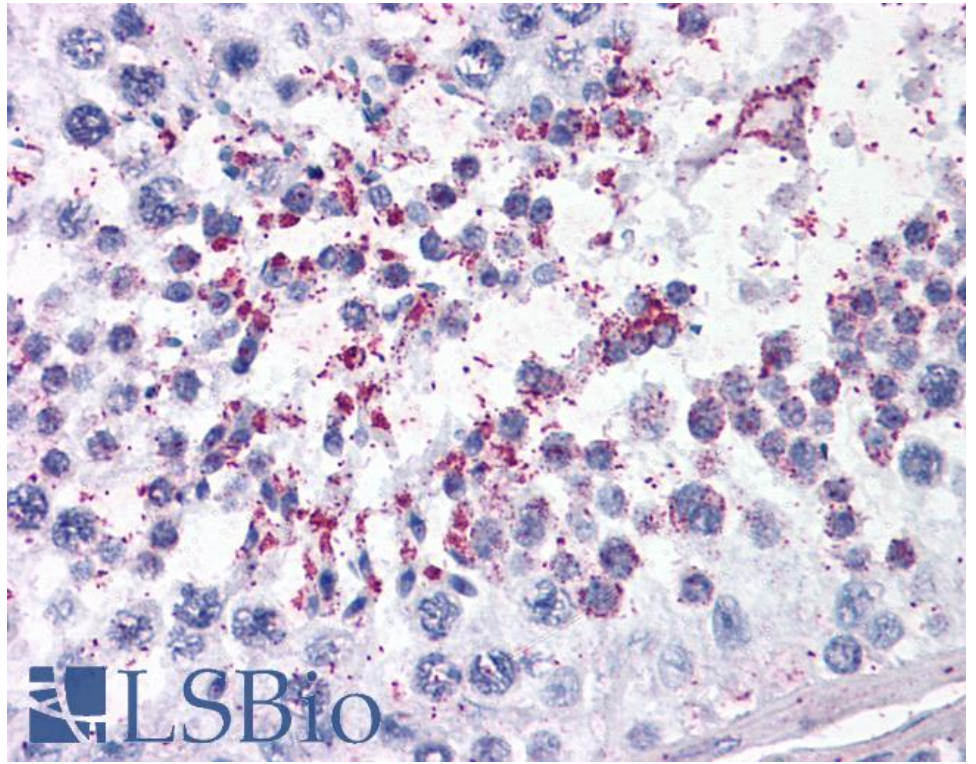
**Western blot:** No signal obtained yet but low background observed in Human Liver extracts at up to 1µg/ml.

**IHC:** Paraffin embedded Human Testis. Recommended concentration: 3.5µg/ml.

### Species Reactivity

**Tested:** Human

**Expected from sequence similarity:** Human, Mouse, Rat, Dog, Cow



EB05320 (3.5µg/ml) staining of paraffin embedded Human Testis. Steamed antigen retrieval with citrate buffer pH 6, AP-staining.