



EB05318 - Goat Anti-DUSP8 / HVH5 Antibody

Size: 100µg specific antibody in 200µl



UK Office

Everest Biotech Ltd

Cherwell Innovation Centre
77 Heyford Park
Upper Heyford
Oxfordshire
OX25 5HD
UK

Enquiries:

info@everestbiotech.com

Sales:

sales@everestbiotech.com

Tech support:

support@everestbiotech.com

Tel: +44 (0)1869 238326

Fax: +44 (0)1869 238327

US Office

Everest Biotech c/o Abcore

405 Maple Street, Suite A106
Ramona,
CA 92065
USA

Inquiries:

info@everestbiotech.com

Sales:

usasales@everestbiotech.com

Tech support:

support@everestbiotech.com

Tel: 888-320-4628 (toll-free)

Fax: 888-841-9041

www.everestbiotech.com

**Research Use Only. Not for
diagnostic or therapeutic use.**

Target Protein

Principal Names: DUSP8, dual specificity phosphatase 8, HB5, HVH8, HVH-5, H1 phosphatase, vaccinia virus homolog, serine/threonine specific protein phosphatase, C11orf81, FLJ42476, FLJ42958, OTTHUMP00000164487

Official Symbol: DUSP8

Accession Number(s): NP_004411.2

Human GeneID(s): [1850](#)

Non-Human GeneID(s): 18218 (mouse)

Important Comments: This antibody is also expected to recognise the hypothetical human protein similar to dual specificity phosphatase 8 (XM_114902), which is virtually identical.

Immunogen

Peptide with sequence AGDRLPRKVM DAK-C, from the N Terminus of the protein sequence according to NP_004411.2.

Please note the [peptide](#) is available for sale.

Purification and Storage

Purified from goat serum by ammonium sulphate precipitation followed by antigen affinity chromatography using the immunizing peptide.

Supplied at 0.5 mg/ml in Tris saline, 0.02% sodium azide, pH7.3 with 0.5% bovine serum albumin.

Aliquot and store at -20°C. Minimize freezing and thawing.

Applications Tested

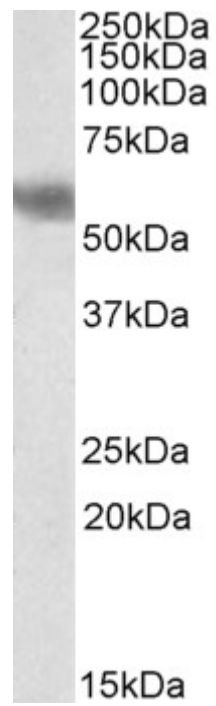
Peptide ELISA: antibody detection limit dilution 1:4000.

Western blot: Approx 55-58kDa band observed in Human (Cerebellum), Mouse and Rat Brain lysates (calculated MW of 65.8kDa according to Human NP_004411.2, 68.8kDa according to Mouse NP_032774.1 and 66.8kDa according to Rat NP_001101980.1).
Recommended concentration: 1-3µg/ml.

Species Reactivity

Tested: Human, Mouse, Rat

Expected from sequence similarity: Human, Mouse, Rat, Cow



EB05318 (2 μ g/ml) staining of Human Cerebellum (A), Mouse (B), and Rat (C) Brain lysate (35 μ g protein in RIPA buffer). Primary incubation was 1 hour. Detected by chemiluminescence.