

International Office

Everest Biotech Ltd

Vector Laboratories, Inc.
6737 Mowry Ave
Newark, CA 94560
United States

Customer Service:

customerservice@vectorlabs.com

Technical Service:

technical@vectorlabs.com

Tel: +1 (800) 227-6666

www.everestbiotech.com

**Research Use Only. Not for
diagnostic or therapeutic use.**

EB12748 - Goat Anti-dUTPase / DUT Antibody

Size: 100µg specific antibody in 200µl



Target Protein

Principal Names: DUT, deoxyuridine triphosphatase, dUTPase, dUTP nucleotidohydrolase, dUTP pyrophosphatase, deoxyuridine 5'-triphosphate nucleotidohydrolase, mitochondrial

Official Symbol: DUT

Accession Number(s): NP_001020419.1; NP_001939.1; NP_001020420.1

Human GeneID(s): [1854](#)

Important Comments: This antibody is expected to recognize all reported isoforms (NP_001020419.1; NP_001939.1; NP_001020420.1).

Immunogen

Peptide with sequence C-QLRFARLSEHATAPT, from the internal region of the protein sequence according to NP_001020419.1; NP_001939.1; NP_001020420.1.

Please note the [peptide](#) is available for sale.

Purification and Storage

Purified from goat serum by ammonium sulphate precipitation followed by antigen affinity chromatography using the immunizing peptide.

Supplied at 0.5 mg/ml in Tris saline, 0.02% sodium azide, pH7.3 with 0.5% bovine serum albumin.

Aliquot and store at -20°C. Minimize freezing and thawing.

Applications Tested

Peptide ELISA: antibody detection limit dilution 1:16000.

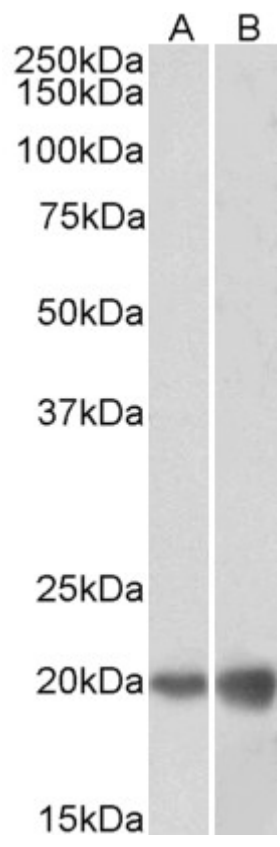
Western blot: Approx 20kDa band observed in lysates of cell lines HEK293 and HeLa (calculated MW of 17.7kDa according to NP_001939.1). Recommended concentration: 0.1-0.3µg/ml. Primary incubation was 1 hour.

IHC: Paraffin embedded Human Testis and Tonsil. Recommended concentration: 5µg/ml.

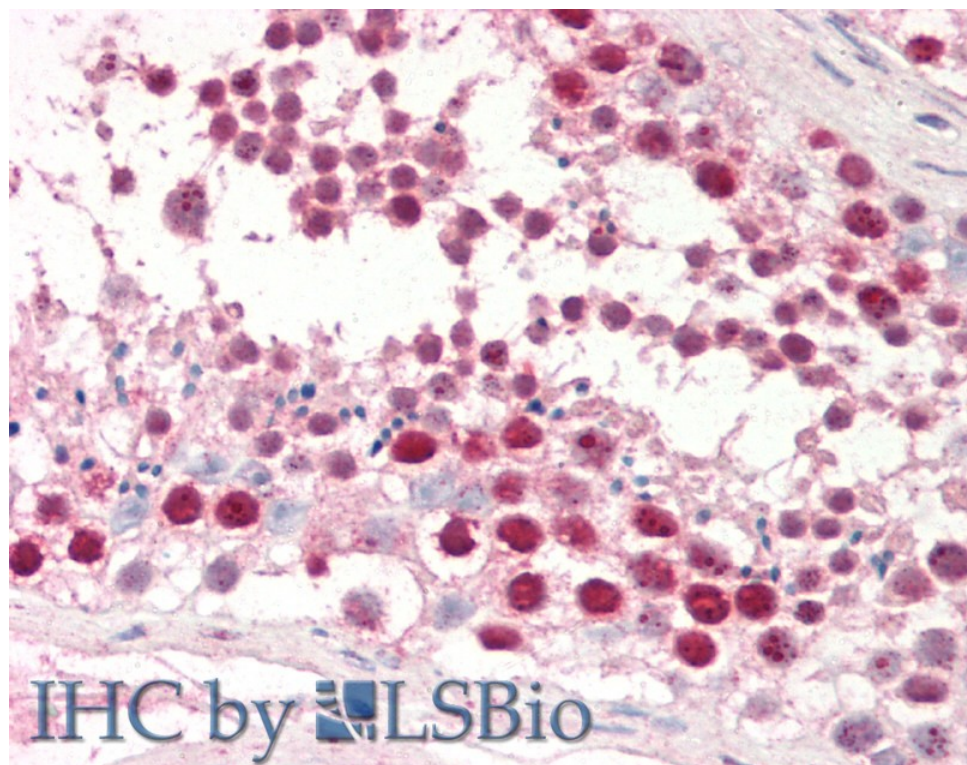
Species Reactivity

Tested: Human

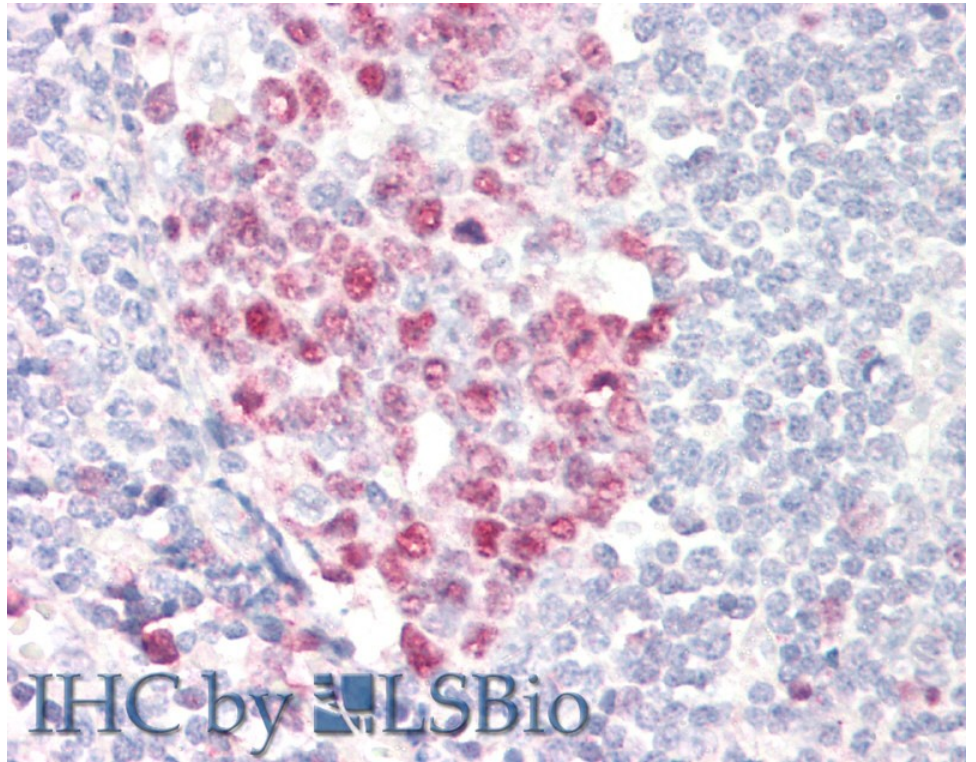
Expected from sequence similarity: Human, Pig, Cow



EB12748 (0.1µg/ml) staining of HEK293 (A) and HeLa (B) lysates (35µg protein in RIPA buffer). Detected by chemiluminescence.



EB12748 (5µg/ml) staining of paraffin embedded Human Testis. Steamed antigen retrieval with citrate buffer pH 6, AP-staining.



EB12748 (5µg/ml) staining of paraffin embedded Human Tonsil. Steamed antigen retrieval with citrate buffer pH 6, AP-staining.