



## UK Office

### Everest Biotech Ltd

Cherwell Innovation Centre  
77 Heyford Park  
Upper Heyford  
Oxfordshire  
OX25 5HD  
UK

Enquiries:

[info@everestbiotech.com](mailto:info@everestbiotech.com)

Sales:

[sales@everestbiotech.com](mailto:sales@everestbiotech.com)

Tech support:

[support@everestbiotech.com](mailto:support@everestbiotech.com)

Tel: +44 (0)1869 238326

[www.everestbiotech.com](http://www.everestbiotech.com)

**Research Use Only. Not for  
diagnostic or therapeutic use.**

## EB05639 - Goat Anti-Dynactin Antibody

Size: 100µg specific antibody in 200µl



### Target Protein

**Principal Names:** DCTN1, dynactin 1 (p150, glued homolog, Drosophila), P135, DP-150, DAP-150, p150-glued, p150, Glued (Drosophila) homolog, 150 kDa dynein-associated polypeptide, dynactin 1 (p150, Glued (Drosophila) homolog), HMN7B, OTTHUMP00000202491, dynactin 1, p150, Glued homolog

**Official Symbol:** DCTN1

**Accession Number(s):** NP\_004073.2; NP\_075408.1; NP\_001128512.1; NP\_001128513.1; NP\_001177765.1; NP\_001177766.1

**Human GeneID(s):** [1639](#)

**Non-Human GeneID(s):** 13191 (mouse)

**Important Comments:** This antibody is expected to recognise all reported isoforms.

### Immunogen

Peptide with sequence C-QEQLHQLHSRLIS, from the C Terminus of the protein sequence according to NP\_004073.2; NP\_075408.1; NP\_001128512.1; NP\_001128513.1; NP\_001177765.1; NP\_001177766.1.

Please note the [peptide](#) is available for sale.

### Purification and Storage

Purified from goat serum by ammonium sulphate precipitation followed by antigen affinity chromatography using the immunizing peptide.

Supplied at 0.5 mg/ml in Tris saline, 0.02% sodium azide, pH7.3 with 0.5% bovine serum albumin.

Aliquot and store at -20°C. Minimize freezing and thawing.

### Applications Tested

**Peptide ELISA:** antibody detection limit dilution 1:16000.

**Western blot:** Approx. 150kDa band observed in HeLa and MCF7 cell lysates, and in preliminary testing of HEK293 and Mouse Brain lysate (calculated MW of 142kDa according to NP\_004073.2). Recommended concentration 0.3-1µg/ml. Primary incubation 1 hour at room temperature.

**IHC:** Paraffin embedded Human Brain (Cortex). Recommended concentration: 6-7µg/ml.

**Immunofluorescence:** Strong expression of the protein seen in the cytoplasm of HeLa cells and additionally the nucleus of U2OS cells.. Recommended concentration: 10µg/ml.

**Flow Cytometry:** Flow cytometric analysis of HeLa cells. Recommended concentration: 10ug/ml.

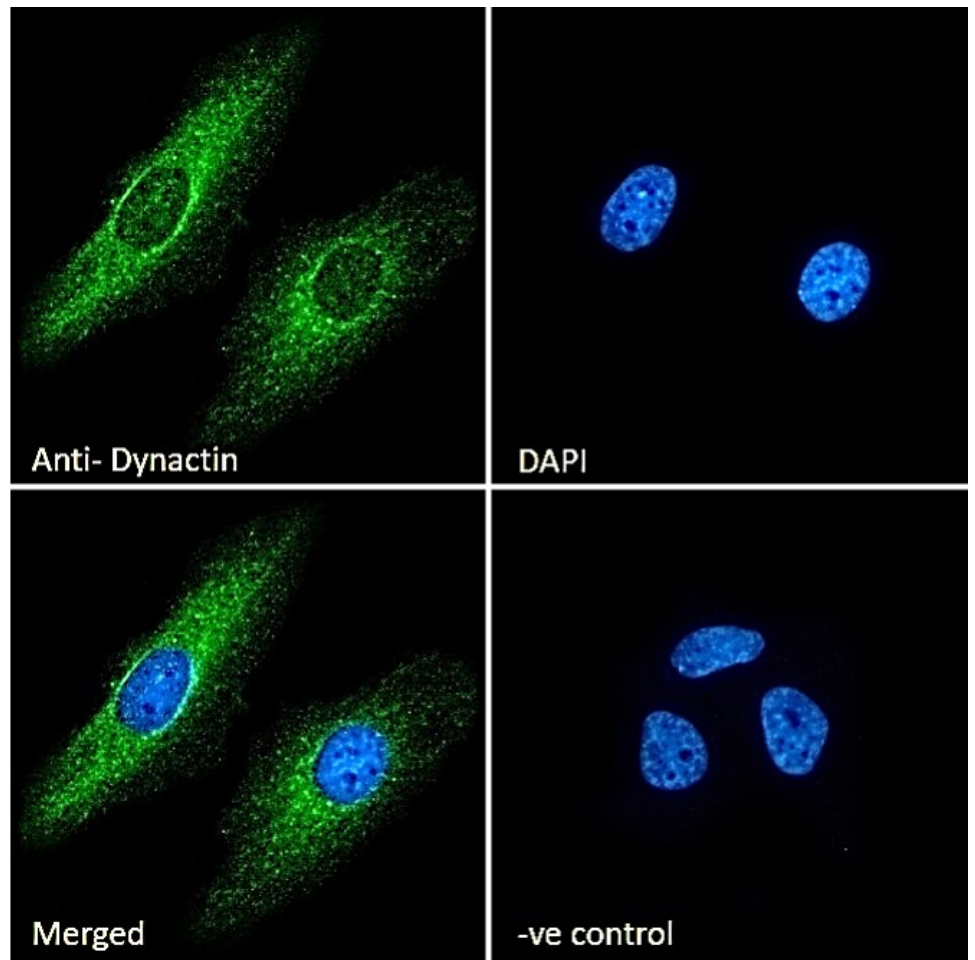
### Species Reactivity

**Tested:** Human

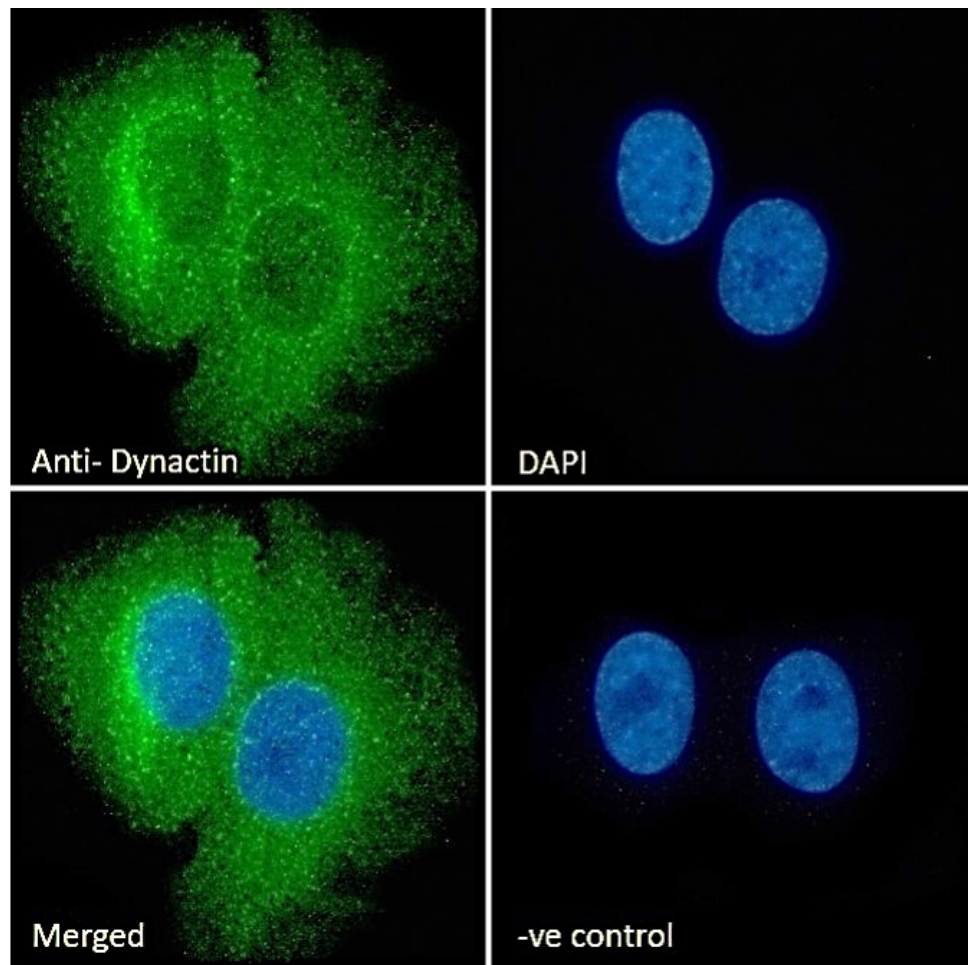
**Expected from sequence similarity:** Human, Mouse



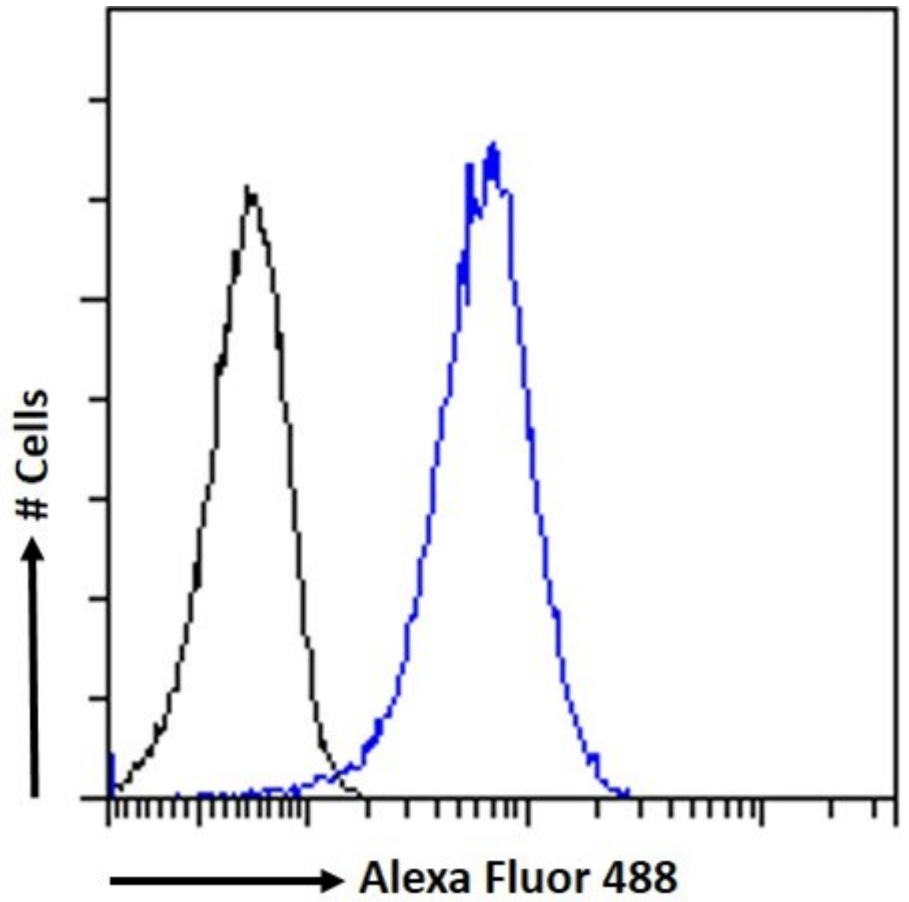
EB05639 (1 $\mu$ g/ml) staining of HeLa (A) and (0.5 $\mu$ g/ml) MCF7 (B) cell lysate (35 $\mu$ g protein in RIPA buffer).  
Detected by chemiluminescence.



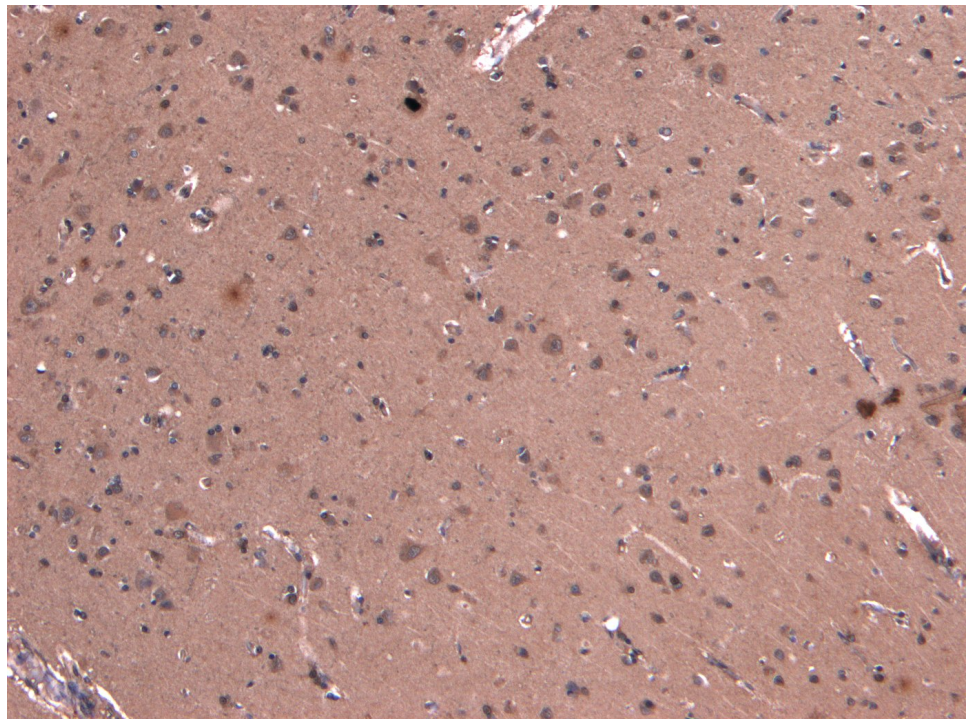
EB05639 Immunofluorescence analysis of paraformaldehyde fixed HeLa cells, permeabilized with 0.15% Triton. Primary incubation 1hr (10ug/ml) followed by Alexa Fluor 488 secondary antibody (2ug/ml), showing cytoplasmic staining. The nuclear stain is DAPI (blue). Negative control: Unimmunized goat IgG (10ug/ml) followed by Alexa Fluor 488 secondary antibody (2ug/ml).



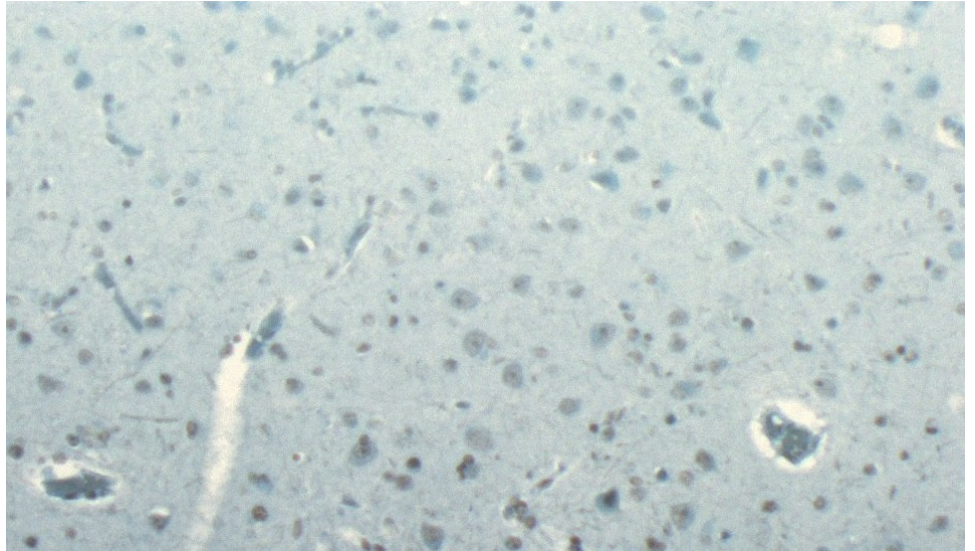
EB05639 Immunofluorescence analysis of paraformaldehyde fixed U2OS cells, permeabilized with 0.15% Triton. Primary incubation 1hr (10ug/ml) followed by Alexa Fluor 488 secondary antibody (2ug/ml), showing cytoplasmic and some nuclear staining. The nuclear stain is DAPI (blue). Negative control: Unimmunized goat IgG (10ug/ml) followed by Alexa Fluor 488 secondary antibody (2ug/ml).



EB05639 Flow cytometric analysis of paraformaldehyde fixed HeLa cells (blue line), permeabilized with 0.5% Triton. Primary incubation 1hr (10ug/ml) followed by Alexa Fluor 488 secondary antibody (1ug/ml). IgG control: Unimmunized goat IgG (black line) followed by Alexa Fluor 488 secondary antibody.



EB05639 (7µg/ml) staining of paraffin embedded Human Cortex. Heat induced antigen retrieval with citrate buffer pH 6, HRP-staining.



EB05639 Negative Control showing staining of paraffin embedded Human Cortex, with no primary antibody.