

## UK Office

### Everest Biotech Ltd

Cherwell Innovation Centre  
77 Heyford Park  
Upper Heyford  
Oxfordshire  
OX25 5HD  
UK

Enquiries:

[info@everestbiotech.com](mailto:info@everestbiotech.com)

Sales:

[sales@everestbiotech.com](mailto:sales@everestbiotech.com)

Tech support:

[support@everestbiotech.com](mailto:support@everestbiotech.com)

Tel: +44 (0)1869 238326

Fax: +44 (0)1869 238327

## US Office

### Everest Biotech c/o Abcore

405 Maple Street, Suite A106  
Ramona,  
CA 92065  
USA

Inquiries:

[info@everestbiotech.com](mailto:info@everestbiotech.com)

Sales:

[usasales@everestbiotech.com](mailto:usasales@everestbiotech.com)

Tech support:

[support@everestbiotech.com](mailto:support@everestbiotech.com)

Tel: 888-320-4628 (toll-free)

Fax: 888-841-9041

[www.everestbiotech.com](http://www.everestbiotech.com)

**Research Use Only. Not for  
diagnostic or therapeutic use.**

## EB11483 - Goat Anti-DYRK1A Antibody

Size: 100µg specific antibody in 200µl



## Target Protein

**Principal Names:** dual specificity tyrosine-phosphorylation-regulated kinase 1A, dual specificity YAK1-related kinase, dual-specificity tyrosine-(Y)-phosphorylation regulated kinase 1A, DYRK, DYRK1, DYRK1A, hMNB, HP86, MNB, mnk protein kinase homolog hp86, MNB/DYRK protein kinase, MNBH, MRD7, OTTHUMP00000109090, OTTHUMP00000109091, OTTHUMP00000109094, OTTHUMP00000174799, protein kinase minibrain homolog, serine/threonine kinase MNB, serine/threonine-specific protein kinase

**Official Symbol:** DYRK1A

**Accession Number(s):** NP\_001387.2; NP\_569120.1; NP\_567824.1; NP\_569122.1

**Human GeneID(s):** [1859](#)

**Non-Human GeneID(s):** 13548 (mouse), 25255 (rat)

**Important Comments:** This antibody is expected to recognize all reported isoforms (NP\_001387.2; NP\_569120.1; NP\_567824.1; NP\_569122.1). This antibody is not expected to cross-react with DYRK1B.

## Immunogen

Peptide with sequence PHSQYSDRRQPN-C, from the N Terminus of the protein sequence according to NP\_001387.2; NP\_569120.1; NP\_567824.1; NP\_569122.1.

Please note the [peptide](#) is available for sale.

## Purification and Storage

Purified from goat serum by ammonium sulphate precipitation followed by antigen affinity chromatography using the immunizing peptide.

Supplied at 0.5 mg/ml in Tris saline, 0.02% sodium azide, pH7.3 with 0.5% bovine serum albumin.

Aliquot and store at -20°C. Minimize freezing and thawing.

## Applications Tested

**Peptide ELISA:** antibody detection limit dilution 1:64000.

**Western blot:** Approx 80kDa band observed in lysates of cell line K562 (calculated MW of 85.6kDa according to NP\_001387.2). Recommended concentration: 0.5-2µg/ml. Primary incubation was 1 hour.

**Immunoprecipitation:** This product has been successfully used in IP on Human: Widowati et al, BMC Res Notes. 2018 May 15;11(1):297. PMID: 29764512.

## Species Reactivity

**Tested:** Human

**Expected from sequence similarity:** Human, Mouse, Rat, Dog, Pig, Cow

## Specific Reference

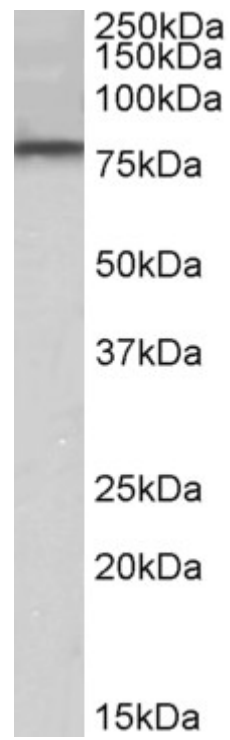
**This antibody has been successfully used in IP on Human:**

Esti Wahyu Widowati, Simone Bamberg-Lemper and Walter Becky

Mutational analysis of two residues in the DYRK homology box of the protein kinase DYRK1A

BMC Res Notes. 2018 May 15;11(1):297.

PMID: 29764512



EB11483 (0.5µg/ml) staining of K562 lysate (35µg protein in RIPA buffer). Detected by chemiluminescence.