



UK Office

Everest Biotech Ltd

Cherwell Innovation Centre
77 Heyford Park
Upper Heyford
Oxfordshire
OX25 5HD
UK

Enquiries:

info@everestbiotech.com

Sales:

sales@everestbiotech.com

Tech support:

support@everestbiotech.com

Tel: +44 (0)1869 238326

Fax: +44 (0)1869 238327

US Office

Everest Biotech c/o Abcore

405 Maple Street, Suite A106
Ramona,
CA 92065
USA

Inquiries:

info@everestbiotech.com

Sales:

usasales@everestbiotech.com

Tech support:

support@everestbiotech.com

Tel: 888-320-4628 (toll-free)

Fax: 888-841-9041

www.everestbiotech.com

**Research Use Only. Not for
diagnostic or therapeutic use.**

EB07254 - Goat Anti-DYX1C1 / EKN1 Antibody

Size: 100µg specific antibody in 200µl



Target Protein

Principal Names: DYX1C1, EKN1, dyslexia susceptibility 1 candidate 1, DYX1, DYXC1, FLJ37882, MGC70618

Official Symbol: DNAAF4

Accession Number(s): NP_570722.2; NP_001028731.1; NP_001028732.1

Human GeneID(s): [161582](#)

Important Comments: This antibody is expected to recognise three reported isoforms (NP_570722.2, NP_001028731.1 and NP_001028732.1).

Immunogen

Peptide with sequence PLQVSDYSWQQTKT-C, from the N Terminus of the protein sequence according to NP_570722.2; NP_001028731.1; NP_001028732.1.

Please note the [peptide](#) is available for sale.

Purification and Storage

Purified from goat serum by ammonium sulphate precipitation followed by antigen affinity chromatography using the immunizing peptide.

Supplied at 0.5 mg/ml in Tris saline, 0.02% sodium azide, pH7.3 with 0.5% bovine serum albumin.

Aliquot and store at -20°C. Minimize freezing and thawing.

Applications Tested

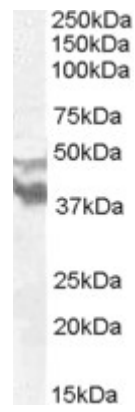
Peptide ELISA: antibody detection limit dilution 1:32000.

Western blot: Approx 48+40kDa bands observed in Human Brain (Cerebral Cortex and Frontal Cortex) lysates (calculated MW of 48.5kDa according to NP_570722.2 and of 44.0kDa according to NP_001028731.1). Recommended concentration: 0.5-1.5µg/ml.

Species Reactivity

Tested: Human

Expected from sequence similarity: Human, Dog



EB07254 (0.5µg/ml) staining of Human Brain (Frontal Cortex) lysate (35µg protein in RIPA buffer). Primary incubation was 1 hour. Detected by chemiluminescence.