

UK Office

Everest Biotech Ltd

Cherwell Innovation Centre
77 Heyford Park
Upper Heyford
Oxfordshire
OX25 5HD
UK

Enquiries:

info@everestbiotech.com

Sales:

sales@everestbiotech.com

Tech support:

support@everestbiotech.com

Tel: +44 (0)1869 238326

www.everestbiotech.com

**Research Use Only. Not for
diagnostic or therapeutic use.**

EB09935 - Goat Anti-E2F3 (mouse) Antibody

Size: 100µg specific antibody in 200µl



Target Protein

Principal Names: E2F transcription factor 3, E2f3a, E2F3b, mKIAA0075, OTTMUSP00000000663, E2f3

Official Symbol: E2f3

Accession Number(s): NP_034223.1

Human GeneID(s): [1871](#)

Non-Human GeneID(s): 13557 (mouse)

Immunogen

Peptide with sequence DLEKLPLVEDFMCS, from the C Terminus of the protein sequence according to NP_034223.1.

Please note the [peptide](#) is available for sale.

Purification and Storage

Purified from goat serum by ammonium sulphate precipitation followed by antigen affinity chromatography using the immunizing peptide.

Supplied at 0.5 mg/ml in Tris saline, 0.02% sodium azide, pH7.3 with 0.5% bovine serum albumin.

Aliquot and store at -20°C. Minimize freezing and thawing.

Applications Tested

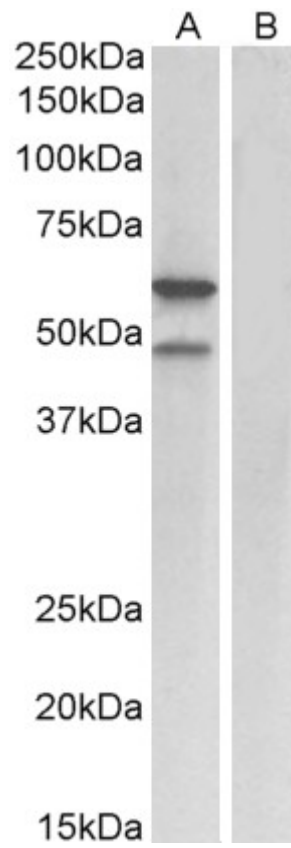
Peptide ELISA: antibody detection limit dilution 1:8000.

Western blot: Approx 60kDa and 48kDa band observed in Mouse fetal Lung lysates (calculated MW of 48.8kDa according to NP_034223.1). The 60kDa band was also observed in nuclear lysates of cell line NIH3T3 and it corresponds with different antibodies from other sources. Recommended concentration: 1-3µg/ml.

Species Reactivity

Tested: Mouse

Expected from sequence similarity: Mouse, Human



EB09935 (1 μ g/ml) staining of Mouse fetal Lung lysate (35 μ g protein in RIPA buffer) with (B) and without (A) blocking with the immunizing peptide. Primary incubation was 1 hour. Detected by chemiluminescence.