



UK Office

Everest Biotech Ltd

Cherwell Innovation Centre
77 Heyford Park
Upper Heyford
Oxfordshire
OX25 5HD
UK

Enquiries:

info@everestbiotech.com

Sales:

sales@everestbiotech.com

Tech support:

support@everestbiotech.com

Tel: +44 (0)1869 238326

www.everestbiotech.com

**Research Use Only. Not for
diagnostic or therapeutic use.**

EB09279 - Goat Anti-E2F7 Antibody

Size: 100µg specific antibody in 200µl



Target Protein

Principal Names: E2F7, E2F transcription factor 7, FLJ12981

Official Symbol: E2F7

Accession Number(s): NP_976328.2

Human GeneID(s): [144455](#)

Immunogen

Peptide with sequence C-DLSKQKKFTPERNP, from the internal region of the protein sequence according to NP_976328.2.

Please note the [peptide](#) is available for sale.

Purification and Storage

Purified from goat serum by ammonium sulphate precipitation followed by antigen affinity chromatography using the immunizing peptide.

Supplied at 0.5 mg/ml in Tris saline, 0.02% sodium azide, pH7.3 with 0.5% bovine serum albumin.

Aliquot and store at -20°C. Minimize freezing and thawing.

Applications Tested

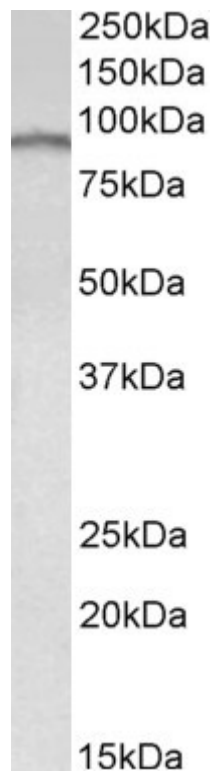
Peptide ELISA: antibody detection limit dilution 1:32000.

Western blot: Approx 90kDa band observed in Human Brain (Cerebellum) lysates (calculated MW of 99.9kDa according to NP_976328.2). Recommended concentration: 0.3-1µg/ml.

Species Reactivity

Tested: Human

Expected from sequence similarity: Human, Dog, Pig



EB09279 (0.3 μ g/ml) staining of Human Cerebellum lysate (35 μ g protein in RIPA buffer). Primary incubation was 1 hour. Detected by chemiluminescence.