



## International Office

### Everest Biotech Ltd

Vector Laboratories, Inc.  
6737 Mowry Ave  
Newark, CA 94560  
United States

Customer Service:

[customerservice@vectorlabs.com](mailto:customerservice@vectorlabs.com)

Technical Service:

[technical@vectorlabs.com](mailto:technical@vectorlabs.com)

Tel: +1 (800) 227-6666

[www.everestbiotech.com](http://www.everestbiotech.com)

**Research Use Only. Not for  
diagnostic or therapeutic use.**

## EB11916 - Goat Anti-EAAT1 / GLAST1 Antibody

Size: 100µg specific antibody in 200µl



### Target Protein

**Principal Names:** SLC1A3, solute carrier family 1 (glial high affinity glutamate transporter), member 3, EA6, EAAT1, FLJ25094, GLAST, GLAST1, GLAST-1, OTTHUMP00000116002, excitatory amino acid transporter 1, sodium-dependent glutamate/aspartate transporter 1, solute carrier family 1 member 3

**Official Symbol:** SLC1A3

**Accession Number(s):** NP\_004163.3; NP\_001160167.1

**Human GeneID(s):** [6507](#)

**Important Comments:** This antibody is expected to recognize isoform 1 (NP\_004163.3) and isoform 2 (NP\_001160167.1).

### Immunogen

Peptide with sequence C-DNETEKPIDSETK, from the C Terminus of the protein sequence according to NP\_004163.3; NP\_001160167.1.

Please note the [peptide](#) is available for sale.

### Purification and Storage

Purified from goat serum by ammonium sulphate precipitation followed by antigen affinity chromatography using the immunizing peptide.

Supplied at 0.5 mg/ml in Tris saline, 0.02% sodium azide, pH7.3 with 0.5% bovine serum albumin.

Aliquot and store at -20°C. Minimize freezing and thawing.

### Applications Tested

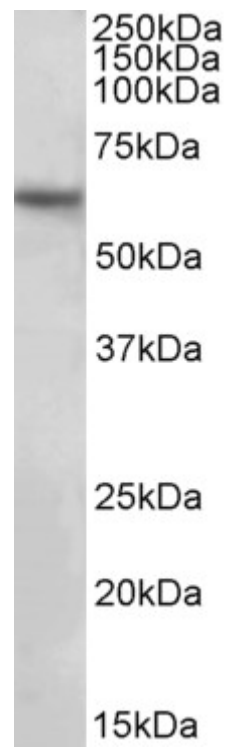
**Peptide ELISA:** antibody detection limit dilution 1:8000.

**Western blot:** Approx 60kDa band observed in Human Brain (Hippocampus) lysates (calculated MW of 59.6kDa according to NP\_004163.3). Recommended concentration: 1-3µg/ml.

### Species Reactivity

**Tested:** Human

**Expected from sequence similarity:** Human



EB11916 (2 $\mu$ g/ml) staining of Human Hippocampus lysate (35 $\mu$ g protein in RIPA buffer). Primary incubation was 1 hour. Detected by chemiluminescence.