



International Office

Everest Biotech Ltd

Vector Laboratories, Inc.
6737 Mowry Ave
Newark, CA 94560
United States

Customer Service:

customerservice@vectorlabs.com

Technical Service:

technical@vectorlabs.com

Tel: +1 (800) 227-6666

www.everestbiotech.com

**Research Use Only. Not for
diagnostic or therapeutic use.**

EB07809 - Goat Anti-EBF1 / COE1 Antibody

Size: 100µg specific antibody in 200µl



Target Protein

Principal Names: EBF1, early B-cell factor 1, COE1, EBF, O/E-1, OLF1, Collier, Olf and EBF transcription factor 1, early B-cell factor olfactory neuronal transcription factor 1

Official Symbol: EBF1

Accession Number(s): NP_076870.1

Human GeneID(s): [1879](#)

Non-Human GeneID(s): 13591 (mouse), 116543 (rat)

Important Comments: This antibody is expected not to cross-react with EBF2, EBF3 and EBF4.

Immunogen

Peptide with sequence C-HNQLPALANTSV, from the internal region of the protein sequence according to NP_076870.1.

Please note the [peptide](#) is available for sale.

Purification and Storage

Purified from goat serum by ammonium sulphate precipitation followed by antigen affinity chromatography using the immunizing peptide.

Supplied at 0.5 mg/ml in Tris saline, 0.02% sodium azide, pH7.3 with 0.5% bovine serum albumin.

Aliquot and store at -20°C. Minimize freezing and thawing.

Applications Tested

Peptide ELISA: antibody detection limit dilution 1:64000.

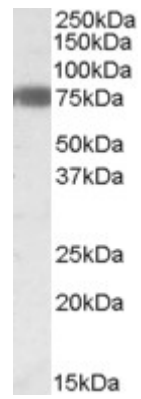
Western blot: Approx. 75kDa band observed in Human Adipose lysates (calculated MW of 64.5kDa according to NP_076870.1). Recommended concentration: 0.3-0.1µg/ml.

Immunoprecipitation: Anonymous customer used this product successfully in IP from induced 3T3-L1 expressing FLAG-EBF1.

Species Reactivity

Tested: Human, Mouse

Expected from sequence similarity: Human, Mouse, Rat



EB07809 (0.3µg/ml) staining of Human Adipose lysate (35µg protein in RIPA buffer). Primary incubation was 1 hour. Detected by chemiluminescence.