

## UK Office

### Everest Biotech Ltd

Cherwell Innovation Centre  
77 Heyford Park  
Upper Heyford  
Oxfordshire  
OX25 5HD  
UK

Enquiries:

[info@everestbiotech.com](mailto:info@everestbiotech.com)

Sales:

[sales@everestbiotech.com](mailto:sales@everestbiotech.com)

Tech support:

[support@everestbiotech.com](mailto:support@everestbiotech.com)

Tel: +44 (0)1869 238326

[www.everestbiotech.com](http://www.everestbiotech.com)

**Research Use Only. Not for  
diagnostic or therapeutic use.**

## EB05995 - Goat Anti-ECT2 Antibody

Size: 100µg specific antibody in 200µl



### Target Protein

**Principal Names:** ECT2, epithelial cell transforming sequence 2 oncogene, FLJ10461, epithelial cell transforming sequence 2 oncogene protein

**Official Symbol:** ECT2

**Accession Number(s):** NP\_060568.3; NP\_001245244.1; NP\_001336023.1; NP\_001336026.1; NP\_001336030.1; NP\_001336031.1; NP\_001336032.1

**Human GeneID(s):** [1894](#)

**Important Comments:** This antibody is expected to recognise NP\_001245244.1 (iso a), NP\_060568.3 (iso b), NP\_001336023.1 (iso c), NP\_001336026.1 (iso d), NP\_001336030.1 (iso e), NP\_001336031.1 (iso f); NP\_001336032.1 (iso g)

### Immunogen

Peptide with sequence AENSVLTSTTGRT-C, from the N Terminus of the protein sequence according to NP\_060568.3; NP\_001245244.1; NP\_001336023.1; NP\_001336026.1; NP\_001336030.1; NP\_001336031.1; NP\_001336032.1.

Please note the [peptide](#) is available for sale.

### Purification and Storage

Purified from goat serum by ammonium sulphate precipitation followed by antigen affinity chromatography using the immunizing peptide.

Supplied at 0.5 mg/ml in Tris saline, 0.02% sodium azide, pH7.3 with 0.5% bovine serum albumin.

Aliquot and store at -20°C. Minimize freezing and thawing.

### Applications Tested

**Peptide ELISA:** antibody detection limit dilution 1:128000.

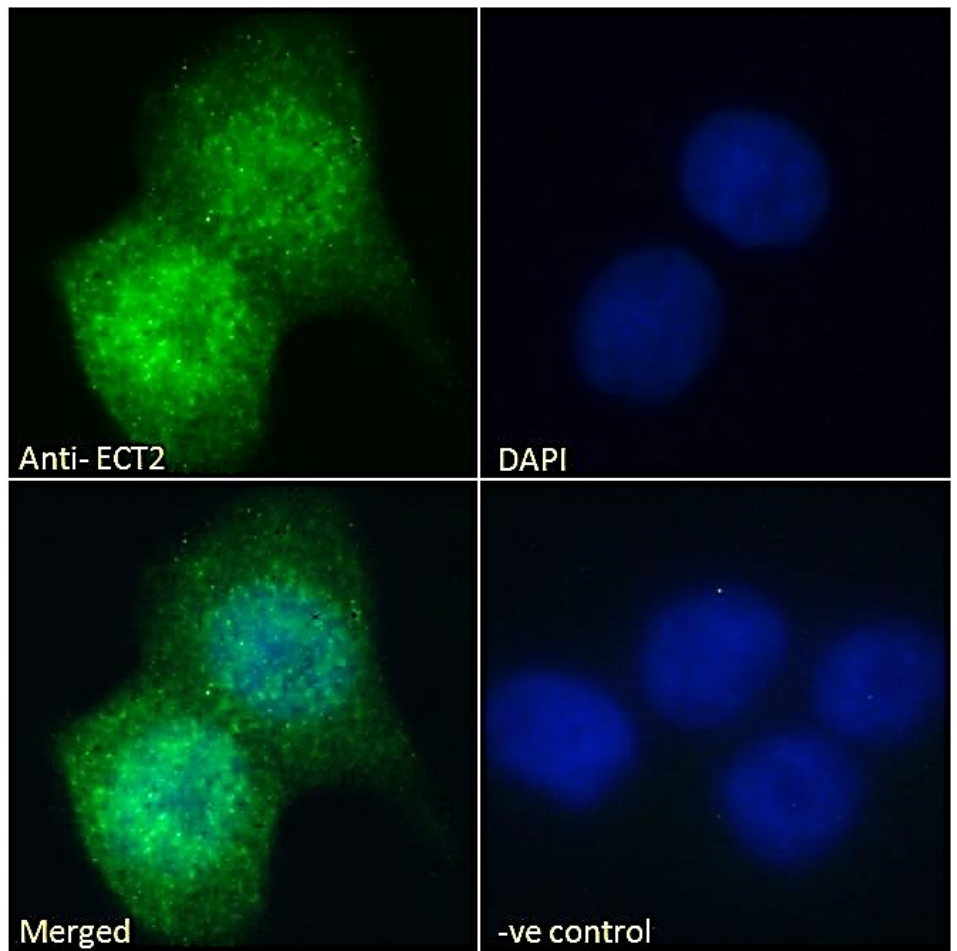
**Immunofluorescence:** Strong expression of the protein seen in the nuclei and cytoplasm of A431 and U2OS cells. Recommended concentration: 10µg/ml.

**Flow Cytometry:** Flow cytometric analysis of A431 cells. Recommended concentration: 10ug/ml.

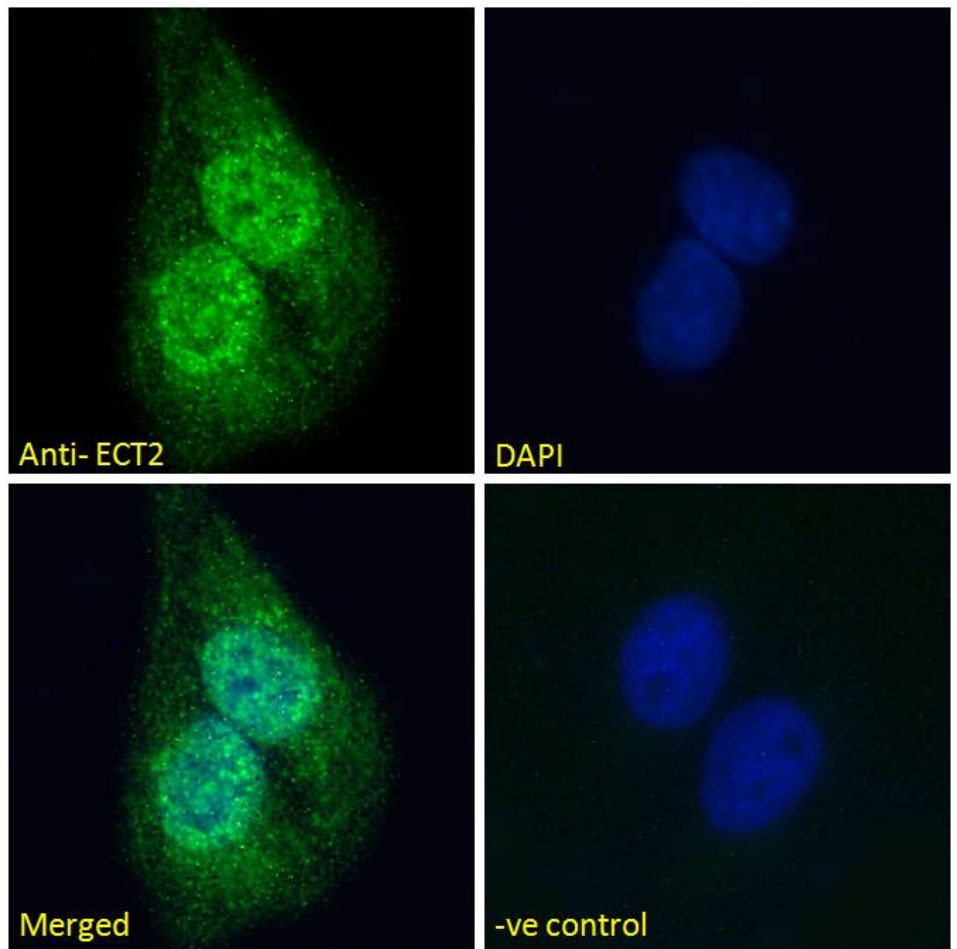
### Species Reactivity

**Tested:** Human

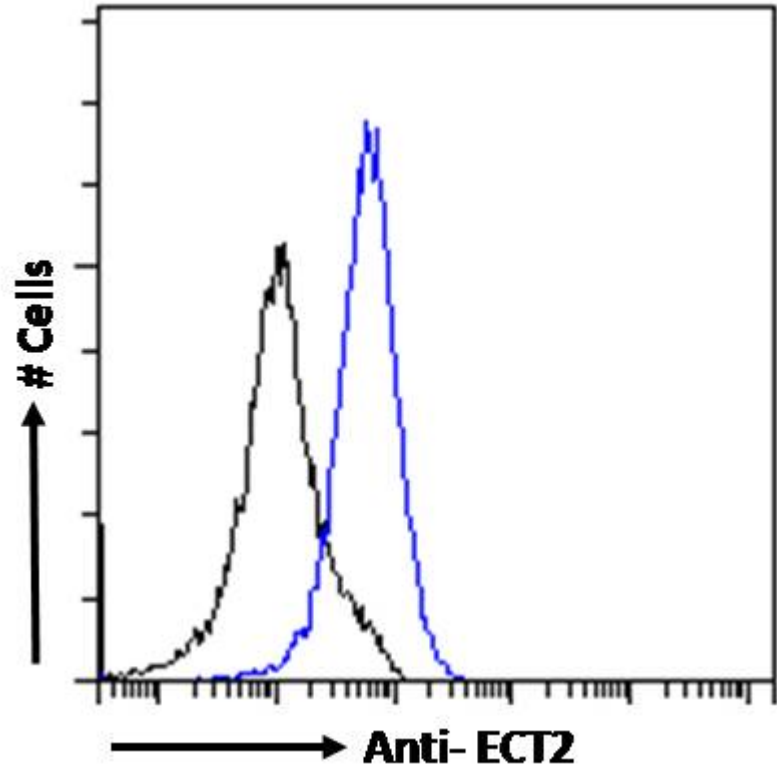
**Expected from sequence similarity:** Human



EB05995 Immunofluorescence analysis of paraformaldehyde fixed A431 cells, permeabilized with 0.15% Triton. Primary incubation 1hr (10ug/ml) followed by Alexa Fluor 488 secondary antibody (2ug/ml), showing strong nuclear and cytoplasmic staining. The nuclear stain is DAPI (blue). Negative control: Unimmunized goat IgG (10ug/ml) followed by Alexa Fluor 488 secondary antibody (2ug/ml).



EB05995 Immunofluorescence analysis of paraformaldehyde fixed U2OS cells, permeabilized with 0.15% Triton. Primary incubation 1hr (10ug/ml) followed by Alexa Fluor 488 secondary antibody (2ug/ml), showing strong nuclear and cytoplasmic staining. The nuclear stain is DAPI (blue). Negative control: Unimmunized goat IgG (10ug/ml) followed by Alexa Fluor 488 secondary antibody (2ug/ml).



EB05995 Flow cytometric analysis of paraformaldehyde fixed A431 cells (blue line), permeabilized with 0.5% Triton. Primary incubation 1hr (10ug/ml) followed by Alexa Fluor 488 secondary antibody (1ug/ml). IgG control: Unimmunized goat IgG (black line) followed by Alexa Fluor 488 secondary antibody.