

## UK Office

### Everest Biotech Ltd

Cherwell Innovation Centre  
77 Heyford Park  
Upper Heyford  
Oxfordshire  
OX25 5HD  
UK

Enquiries:

[info@everestbiotech.com](mailto:info@everestbiotech.com)

Sales:

[sales@everestbiotech.com](mailto:sales@everestbiotech.com)

Tech support:

[support@everestbiotech.com](mailto:support@everestbiotech.com)

Tel: +44 (0)1869 238326

[www.everestbiotech.com](http://www.everestbiotech.com)

**Research Use Only. Not for  
diagnostic or therapeutic use.**

## EB05920 - Goat Anti-EDD1 / HYD Antibody

Size: 100µg specific antibody in 200µl



### Target Protein

**Principal Names:** UBR5, EDD1, E3 ubiquitin protein ligase, HECT domain containing, 1, DD5, EDD, HYD, KIAA0896, progesterin induced protein, ubiquitin-protein ligase, E3 identified by differential display, hyperplastic discs protein homolog, ubiquitin protein ligase E3 component n-recognin 5, FLJ11310, MGC57263

**Official Symbol:** UBR5

**Accession Number(s):** NP\_056986.2

**Human GeneID(s):** [51366](#)

**Non-Human GeneID(s):** 70790 (mouse), 117060 (rat)

### Immunogen

Peptide with sequence C-LAIKTKNFGFV, from the C Terminus of the protein sequence according to NP\_056986.2.

Please note the [peptide](#) is available for sale.

### Purification and Storage

Purified from goat serum by ammonium sulphate precipitation followed by antigen affinity chromatography using the immunizing peptide.

Supplied at 0.5 mg/ml in Tris saline, 0.02% sodium azide, pH7.3 with 0.5% bovine serum albumin.

Aliquot and store at -20°C. Minimize freezing and thawing.

### Applications Tested

**Peptide ELISA:** antibody detection limit dilution 1:4000.

**IHC:** In paraffin embedded Human Testis shows nuclear staining in all germ cells.

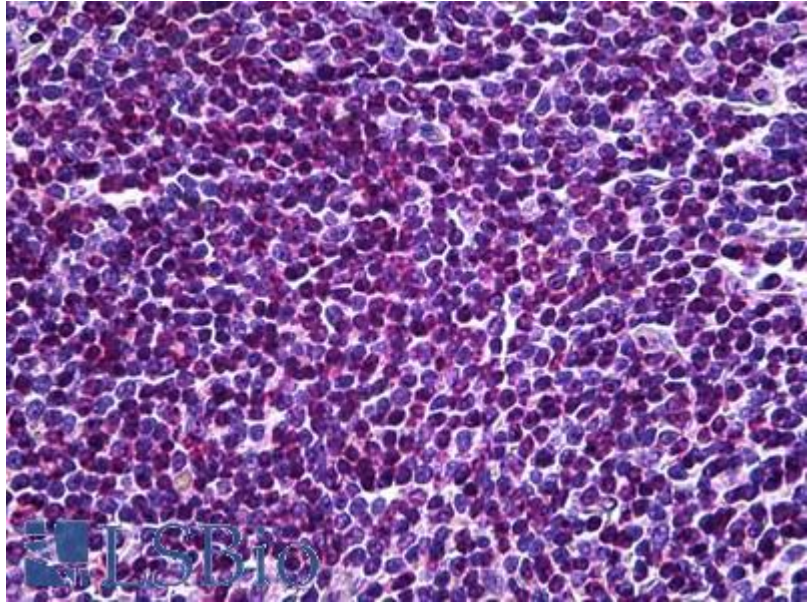
Recommended concentration: 1-2µg/ml. Paraffin embedded Human Spleen.

Recommended concentration: 1-2µg/ml.

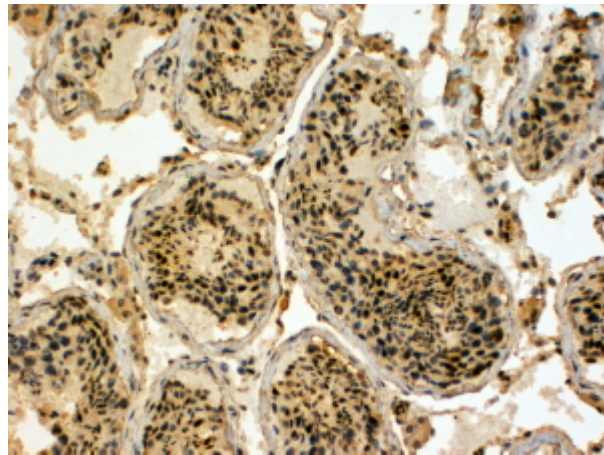
### Species Reactivity

**Tested:** Human

**Expected from sequence similarity:** Human, Mouse, Rat, Pig, Cow



EB05920 (3.75 $\mu$ g/ml) staining of paraffin embedded Human Spleen. Steamed antigen retrieval with citrate buffer pH 6, AP-staining.



EB05920 (4 $\mu$ g/ml) staining of paraffin embedded Human Testis. Steamed antigen retrieval with Tris/EDTA buffer pH 9, HRP-staining. These results could not be obtained after antigen retrieval at pH6.