

## UK Office

### Everest Biotech Ltd

Cherwell Innovation Centre  
77 Heyford Park  
Upper Heyford  
Oxfordshire  
OX25 5HD  
UK

Enquiries:

[info@everestbiotech.com](mailto:info@everestbiotech.com)

Sales:

[sales@everestbiotech.com](mailto:sales@everestbiotech.com)

Tech support:

[support@everestbiotech.com](mailto:support@everestbiotech.com)

Tel: +44 (0)1869 238326

[www.everestbiotech.com](http://www.everestbiotech.com)

**Research Use Only. Not for  
diagnostic or therapeutic use.**

## EB12263 - Goat Anti-EDF1 Antibody

Size: 100µg specific antibody in 200µl



### Target Protein

**Principal Names:** EDF1, endothelial differentiation-related factor 1, EDF-1, MBF1, multiprotein bridging factor 1

**Official Symbol:** EDF1

**Accession Number(s):** NP\_003783.1; NP\_694880.1

**Human GeneID(s):** [8721](#)

**Non-Human GeneID(s):** 59022 (mouse), 678956 (rat)

**Important Comments:** This antibody is expected to recognize both reported isoforms (NP\_003783.1; NP\_694880.1).

### Immunogen

Peptide with sequence C-NKQHSITKNTAKLDR, from the internal region of the protein sequence according to NP\_003783.1; NP\_694880.1.

Please note the [peptide](#) is available for sale.

### Purification and Storage

Purified from goat serum by ammonium sulphate precipitation followed by antigen affinity chromatography using the immunizing peptide.

Supplied at 0.5 mg/ml in Tris saline, 0.02% sodium azide, pH7.3 with 0.5% bovine serum albumin.

Aliquot and store at -20°C. Minimize freezing and thawing.

### Applications Tested

**Peptide ELISA:** antibody detection limit dilution 1:128000.

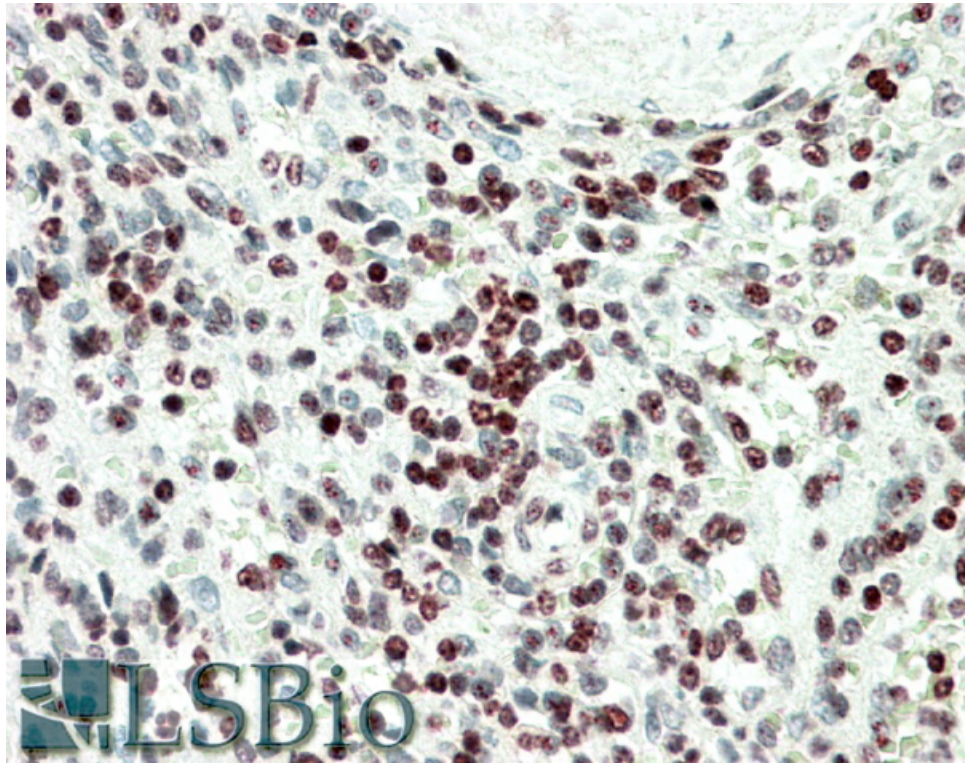
**Western blot:** Approx 17kDa band observed in lysates of cell line A549 (calculated MW of 16.4kDa according to NP\_003783.1). Recommended concentration: 0.3-1µg/ml.

**IHC:** In paraffin embedded Human Spleen shows nuclear staining of select lymphocytes in the marginal zone. Recommended concentration, 5-10µg/ml.

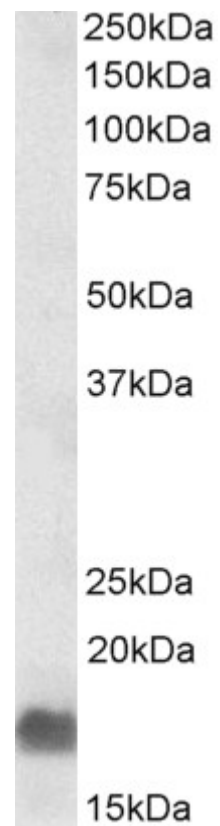
### Species Reactivity

**Tested:** Human

**Expected from sequence similarity:** Human, Mouse, Rat, Pig



EB12263 (5 $\mu$ g/ml) staining of paraffin embedded Human Spleen. Steamed antigen retrieval with citrate buffer pH 6, AP-staining.



EB12263 (0.3 $\mu$ g/ml) staining of A549 lysate (35 $\mu$ g protein in RIPA buffer). Primary incubation was 1 hour. Detected by chemiluminescence.