



## UK Office

### Everest Biotech Ltd

Cherwell Innovation Centre  
77 Heyford Park  
Upper Heyford  
Oxfordshire  
OX25 5HD  
UK

Enquiries:

[info@everestbiotech.com](mailto:info@everestbiotech.com)

Sales:

[sales@everestbiotech.com](mailto:sales@everestbiotech.com)

Tech support:

[support@everestbiotech.com](mailto:support@everestbiotech.com)

Tel: +44 (0)1869 238326

Fax: +44 (0)1869 238327

## US Office

### Everest Biotech c/o Abcore

405 Maple Street, Suite A106  
Ramona,  
CA 92065  
USA

Inquiries:

[info@everestbiotech.com](mailto:info@everestbiotech.com)

Sales:

[usasales@everestbiotech.com](mailto:usasales@everestbiotech.com)

Tech support:

[support@everestbiotech.com](mailto:support@everestbiotech.com)

Tel: 888-320-4628 (toll-free)

Fax: 888-841-9041

[www.everestbiotech.com](http://www.everestbiotech.com)

**Research Use Only. Not for  
diagnostic or therapeutic use.**

## EB09356 - Goat Anti-EDG3 Antibody

Size: 100µg specific antibody in 200µl



## Target Protein

**Principal Names:** S1PR3, sphingosine-1-phosphate receptor 3, EDG-3, EDG3, FLJ37523, FLJ93220, LPB3, MGC71696, S1P3, G protein-coupled receptor, endothelial differentiation gene-3, S1P receptor EDG3, endothelial differentiation, sphingolipid G-protein-coupled receptor, 3, sphingosine 1-phosphate receptor 3

**Official Symbol:** S1PR3

**Accession Number(s):** NP\_005217.2

**Human GeneID(s):** [1903](#)

## Immunogen

Peptide with sequence C-SSRKVANHHNSERS, from the internal region of the protein sequence according to NP\_005217.2.

Please note the [peptide](#) is available for sale.

## Purification and Storage

Purified from goat serum by ammonium sulphate precipitation followed by antigen affinity chromatography using the immunizing peptide.

Supplied at 0.5 mg/ml in Tris saline, 0.02% sodium azide, pH7.3 with 0.5% bovine serum albumin.

Aliquot and store at -20°C. Minimize freezing and thawing.

## Applications Tested

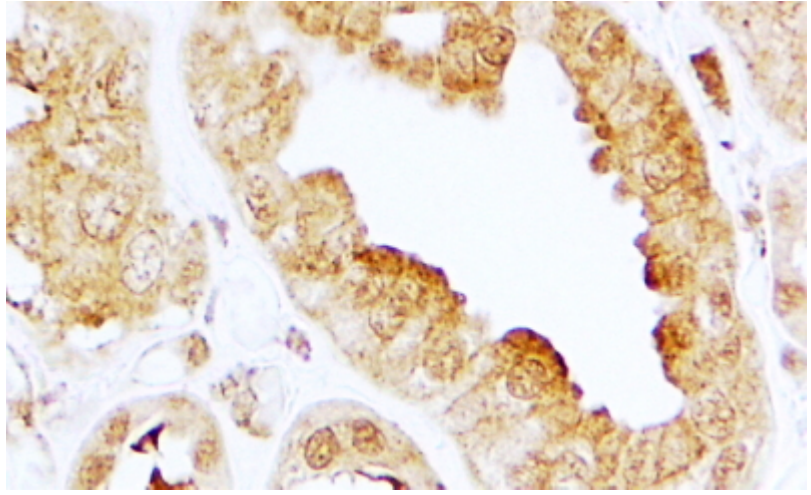
**Peptide ELISA:** antibody detection limit dilution 1:16000.

**IHC:** In paraffin embedded Human Kidney shows membrane staining in CT.  
Recommended concentration, 2-4µg/ml.

## Species Reactivity

**Tested:** Human

**Expected from sequence similarity:** Human



EB09356 (2 $\mu$ g/ml) staining of paraffin embedded Human Kidney. Steamed antigen retrieval with citrate buffer pH 6, HRP-staining.