



International Office

Everest Biotech Ltd

Vector Laboratories, Inc.
6737 Mowry Ave
Newark, CA 94560
United States

Customer Service:

customerservice@vectorlabs.com

Technical Service:

technical@vectorlabs.com

Tel: +1 (800) 227-6666

www.everestbiotech.com

**Research Use Only. Not for
diagnostic or therapeutic use.**

EB11854 - Goat Anti-EEF1A2 Antibody

Size: 100µg specific antibody in 200µl



Target Protein

Principal Names: EEF1A2, eEF1A-2, EEF1AL, EF1A, EF-1-alpha-2, elongation factor 1-alpha 2, elongation factor-1 alpha, eukaryotic elongation factor 1 A-2, eukaryotic translation elongation factor 1 alpha 2, FLJ41696, HS1, OTTHUMP00000031776, statin S1, statin-S1, STN, STNL

Official Symbol: EEF1A2

Accession Number(s): NP_001949.1

Human GeneID(s): [1917](#)

Non-Human GeneID(s): 13628 (mouse), 24799 (rat)

Immunogen

Peptide with sequence C-NPATVPFVPIS, from the internal region of the protein sequence according to NP_001949.1.

Please note the [peptide](#) is available for sale.

Purification and Storage

Purified from goat serum by ammonium sulphate precipitation followed by antigen affinity chromatography using the immunizing peptide.

Supplied at 0.5 mg/ml in Tris saline, 0.02% sodium azide, pH7.3 with 0.5% bovine serum albumin.

Aliquot and store at -20°C. Minimize freezing and thawing.

Applications Tested

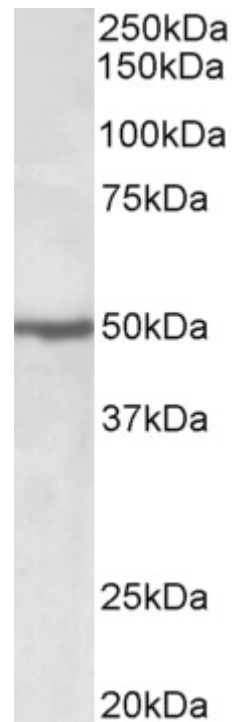
Peptide ELISA: antibody detection limit dilution 1:8000.

Western blot: Approx 50kDa band observed in lysates of cell lines Daudi and Jurkat (calculated MW of 50.5kDa according to NP_001949.1). The same band is observed in lysates of Mouse and Rat Heart and Skeletal Muscle. Recommended concentration: 0.5-2µg/ml.

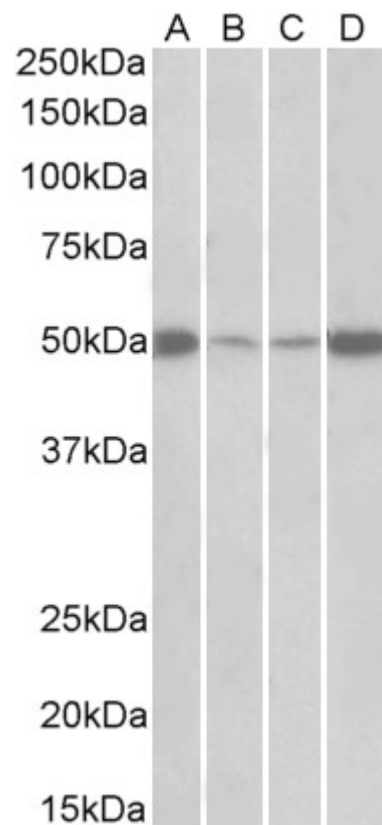
Species Reactivity

Tested: Human, Mouse, Rat

Expected from sequence similarity: Human, Mouse, Rat, Dog, Cow



EB11854 (0.5µg/ml) staining of Jurkat lysate (35µg protein in RIPA buffer). Primary incubation was 1 hour. Detected by chemiluminescence.



EB11854 (0.5µg/ml) staining of Mouse (A+C) and Rat (B+D) Skeletal Muscle (A+B) and Heart (C+D) lysates (35µg protein in RIPA buffer). Primary incubation was 1 hour. Detected by chemiluminescence.