



International Office

Everest Biotech Ltd

Vector Laboratories, Inc.
6737 Mowry Ave
Newark, CA 94560
United States

Customer Service:

customerservice@vectorlabs.com

Technical Service:

technical@vectorlabs.com

Tel: +1 (800) 227-6666

www.everestbiotech.com

**Research Use Only. Not for
diagnostic or therapeutic use.**

EB09784 - Goat Anti-EFNA5 Antibody

Size: 100µg specific antibody in 200µl



Target Protein

Principal Names: AF1, EFL5, eph-related receptor tyrosine kinase ligand 7, ephrin-A5, EPLG7, GLC1M, LERK7, RAGS, EFNA5

Official Symbol: EFNA5

Accession Number(s): NP_001953.1

Human GeneID(s): [1946](#)

Non-Human GeneID(s): 13640 (mouse), 116683 (rat)

Immunogen

Peptide with sequence C-DDTVHESAEPSR, from the internal region of the protein sequence according to NP_001953.1.

Please note the [peptide](#) is available for sale.

Purification and Storage

Purified from goat serum by ammonium sulphate precipitation followed by antigen affinity chromatography using the immunizing peptide.

Supplied at 0.5 mg/ml in Tris saline, 0.02% sodium azide, pH7.3 with 0.5% bovine serum albumin.

Aliquot and store at -20°C. Minimize freezing and thawing.

Applications Tested

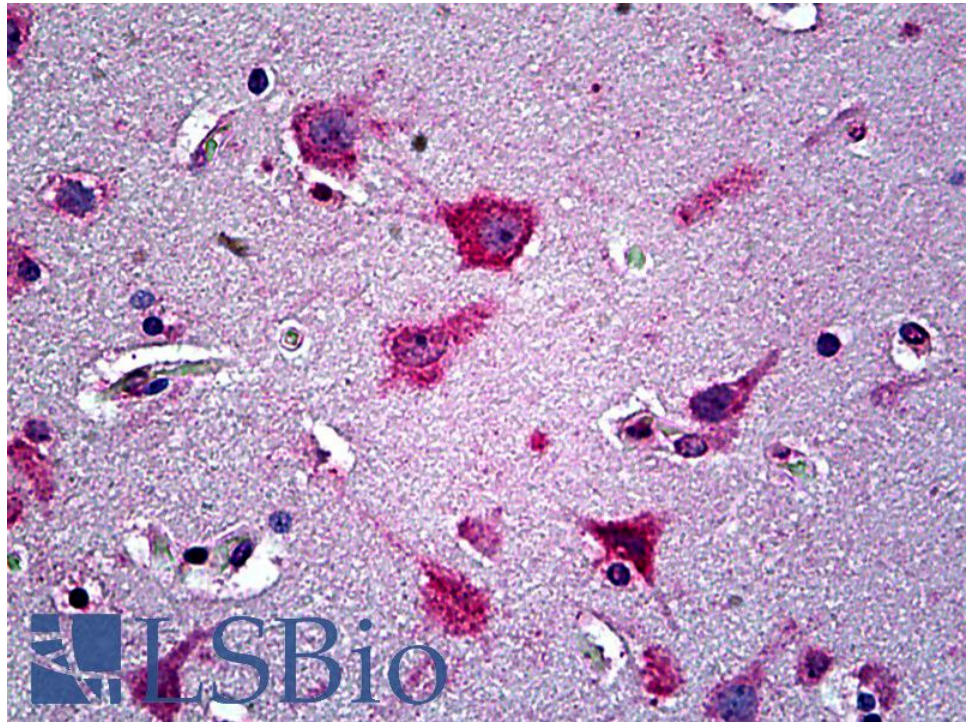
Peptide ELISA: antibody detection limit dilution 1:8000.

IHC: Paraffin embedded Human Brain (Cortex and Cerebellum). Recommended concentration: 3.75µg/ml.

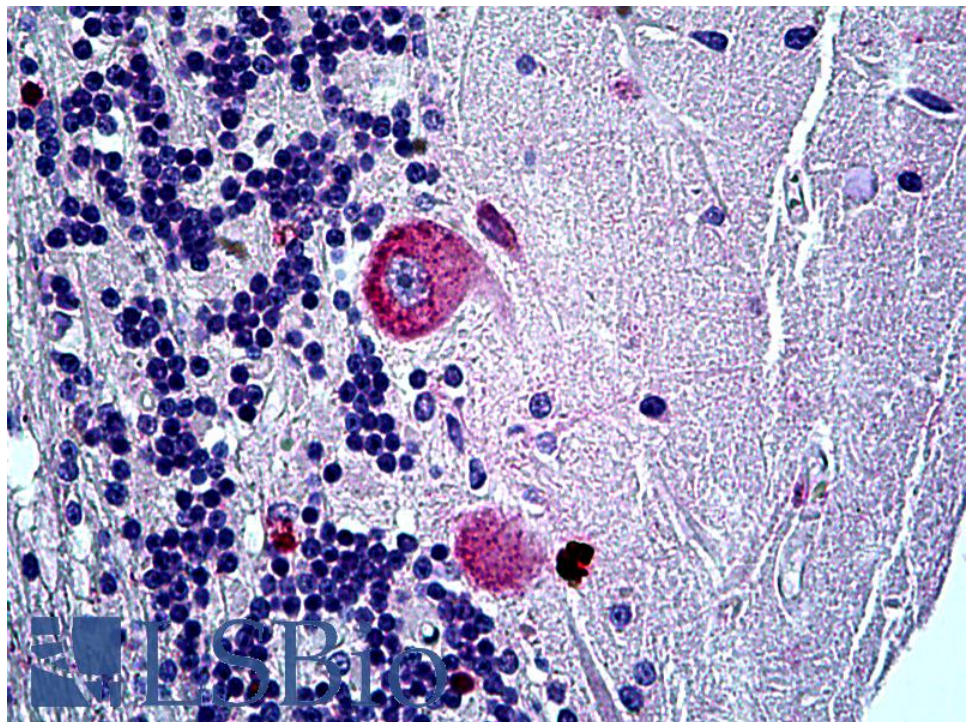
Species Reactivity

Tested: Human

Expected from sequence similarity: Human, Mouse, Rat, Dog, Cow



EB09784 (3.75µg/ml) staining of paraffin embedded Human Brain Cortex. Steamed antigen retrieval with citrate buffer Ph 6, AP-staining.



EB09784 (3.75µg/ml) staining of paraffin embedded Human Cerebellum. Steamed antigen retrieval with citrate buffer pH 6, AP-staining.