



International Office

Everest Biotech Ltd

Vector Laboratories, Inc.
6737 Mowry Ave
Newark, CA 94560
United States

Customer Service:

customerservice@vectorlabs.com

Technical Service:

technical@vectorlabs.com

Tel: +1 (800) 227-6666

www.everestbiotech.com

**Research Use Only. Not for
diagnostic or therapeutic use.**

EB10239 - Goat Anti-EFNB2 Antibody

Size: 100µg specific antibody in 200µl



Target Protein

Principal Names: eph-related receptor tyrosine kinase ligand 5, ephrin B2, ephrin-B2, EPLG5, HTK ligand, HTKL, Htk-L, LERK5, ligand of eph-related kinase 5, MGC126226, MGC126227, MGC126228, EFNB2

Official Symbol: EFNB2

Accession Number(s): NP_004084.1

Human GeneID(s): [1948](#)

Non-Human GeneID(s): 13642 (mouse), 306636 (rat)

Immunogen

Peptide with sequence CPKVDSKTVGQYE, from the internal region of the protein sequence according to NP_004084.1.

Please note the [peptide](#) is available for sale.

Purification and Storage

Purified from goat serum by ammonium sulphate precipitation followed by antigen affinity chromatography using the immunizing peptide.

Supplied at 0.5 mg/ml in Tris saline, 0.02% sodium azide, pH7.3 with 0.5% bovine serum albumin.

Aliquot and store at -20°C. Minimize freezing and thawing.

Applications Tested

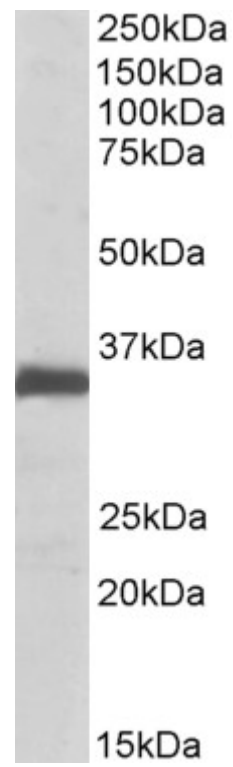
Peptide ELISA: antibody detection limit dilution 1:16000.

Western blot: Approx 35kDa band observed in Human, Mouse and Rat Lung lysates (calculated MW of 36.9kDa according to NP_004084.1). Recommended concentration: 0.1-0.3µg/ml.

Species Reactivity

Tested: Human, Mouse, Rat

Expected from sequence similarity: Human, Mouse, Rat, Dog, Cow, Pig



EB10239 (0.1 μ g/ml) staining of Rat Lung lysate (35 μ g protein in RIPA buffer). Primary incubation was 1 hour.
Detected by chemiluminescence.