



UK Office

Everest Biotech Ltd

Cherwell Innovation Centre
77 Heyford Park
Upper Heyford
Oxfordshire
OX25 5HD
UK

Enquiries:

info@everestbiotech.com

Sales:

sales@everestbiotech.com

Tech support:

support@everestbiotech.com

Tel: +44 (0)1869 238326

Fax: +44 (0)1869 238327

US Office

Everest Biotech c/o Abcore

405 Maple Street, Suite A106
Ramona,
CA 92065
USA

Inquiries:

info@everestbiotech.com

Sales:

usasales@everestbiotech.com

Tech support:

support@everestbiotech.com

Tel: 888-320-4628 (toll-free)

Fax: 888-841-9041

www.everestbiotech.com

**Research Use Only. Not for
diagnostic or therapeutic use.**

EB12753 - Goat Anti-EGFL7 Antibody

Size: 100µg specific antibody in 200µl



Target Protein

Principal Names: EGFL7, EGF-like-domain, multiple 7, NEU1, RP11-251M1.2, VE-STATIN, ZNEU1, EGF-like protein 7, NOTCH4-like protein, epidermal growth factor-like protein 7, multiple EGF-like domains protein 7, multiple epidermal growth factor-like domains protein 7,

Official Symbol: EGFL7

Accession Number(s): NP_057299.1

Human GeneID(s): [51162](#)

Important Comments: The immunizing peptide represents the N terminus of the mature protein. Reported variants represent identical protein: NP_057299.1, NP_958854.1.

Immunogen

Peptide with sequence C-HGDPVSESFVQR, from the internal region of the protein sequence according to NP_057299.1.

Please note the [peptide](#) is available for sale.

Purification and Storage

Purified from goat serum by ammonium sulphate precipitation followed by antigen affinity chromatography using the immunizing peptide.

Supplied at 0.5 mg/ml in Tris saline, 0.02% sodium azide, pH7.3 with 0.5% bovine serum albumin.

Aliquot and store at -20°C. Minimize freezing and thawing.

Applications Tested

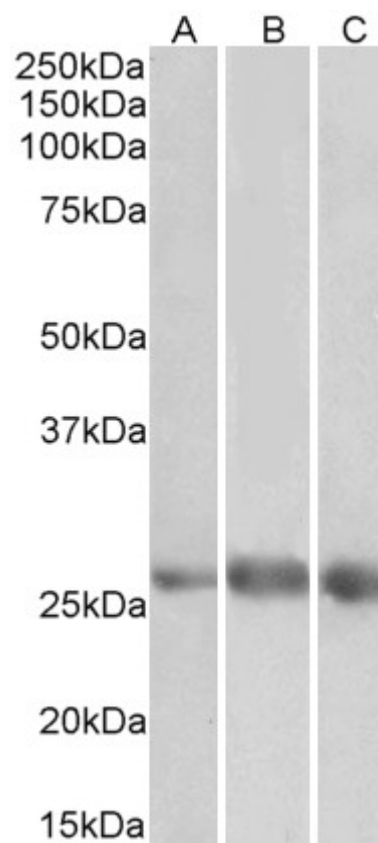
Peptide ELISA: antibody detection limit dilution 1:128000.

Western blot: Approx 26-27kDa band observed in Human Heart, Kidney and Lung lysates (calculated MW of 29.6kDa according to NP_057299.1). The observed molecular weight corresponds to the mature form (calc. MW 27.1kDa without its 23aa signal peptide). Recommended concentration: 1-3µg/ml. Primary incubation 1 hour at room temperature.

Species Reactivity

Tested: Human

Expected from sequence similarity: Human



EB12753 (1 μ g/ml) staining of Heart (A), Kidney (B) and Lung (C) lysates (35 μ g protein in RIPA buffer). Detected by chemiluminescence.