



## International Office

### Everest Biotech Ltd

Vector Laboratories, Inc.  
6737 Mowry Ave  
Newark, CA 94560  
United States

Customer Service:

[customerservice@vectorlabs.com](mailto:customerservice@vectorlabs.com)

Technical Service:

[technical@vectorlabs.com](mailto:technical@vectorlabs.com)

Tel: +1 (800) 227-6666

[www.everestbiotech.com](http://www.everestbiotech.com)

**Research Use Only. Not for  
diagnostic or therapeutic use.**

## EB08637 - Goat Anti-EGLN3 Antibody

Size: 100µg specific antibody in 200µl



### Target Protein

**Principal Names:** EGLN3, egl nine homolog 3 (C. elegans), FLJ21620, HIFPH3, MGC125998, MGC125999, PHD3, EGL nine (C.elegans) homolog 3, egl nine homolog 3, egl nine-like protein 3 isoform

**Official Symbol:** EGLN3

**Accession Number(s):** NP\_071356.1

**Human GeneID(s):** [112399](#)

**Non-Human GeneID(s):** 112407 (mouse), 54702 (rat)

### Immunogen

Peptide with sequence C-RLGKYVVKERSK, from the internal region of the protein sequence according to NP\_071356.1.

Please note the [peptide](#) is available for sale.

### Purification and Storage

Purified from goat serum by ammonium sulphate precipitation followed by antigen affinity chromatography using the immunizing peptide.

Supplied at 0.5 mg/ml in Tris saline, 0.02% sodium azide, pH7.3 with 0.5% bovine serum albumin.

Aliquot and store at -20°C. Minimize freezing and thawing.

### Applications Tested

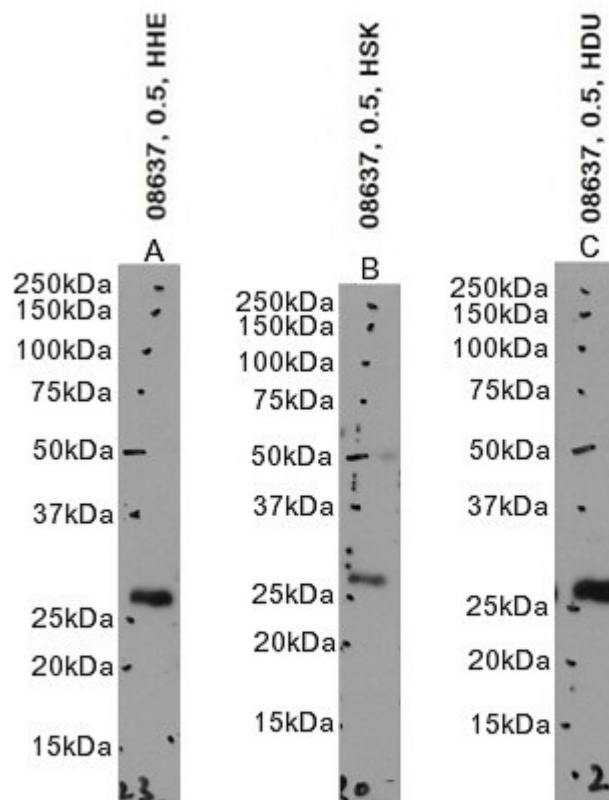
**Peptide ELISA:** antibody detection limit dilution 1:8000.

**Western blot:** Approx. 26kDa band observed in Human Skin and Duodenum lysates and approx. 27kDa on Human Heart lysates (calculated MW of 27.7kDa according to NP\_071356.1). Recommended concentration: 0.5-1µg/ml. Primary incubation 1 hour at room temperature.

### Species Reactivity

**Tested:** Human

**Expected from sequence similarity:** Human, Mouse, Rat, Dog, Cow



EB08637 optimised QC. Primary incubation 1 hour at room temperature.  
 Images A, B, C: Human Heart, Skin, Duodenum lysate at primary Ab concentration  
 0.5µg/ml. (Loaded 35µg protein in RIPA buffer, per lane). Detected by  
 chemiluminescence.