



International Office

Everest Biotech Ltd

Vector Laboratories, Inc.
6737 Mowry Ave
Newark, CA 94560
United States

Customer Service:

customerservice@vectorlabs.com

Technical Service:

technical@vectorlabs.com

Tel: +1 (800) 227-6666

www.everestbiotech.com

**Research Use Only. Not for
diagnostic or therapeutic use.**

EB07891 - Goat Anti-EGR2 Antibody

Size: 100µg specific antibody in 200µl



Target Protein

Principal Names: EGR2, early growth response 2 (Krox-20 homolog, Drosophila), CMT1D, CMT4E, DKFZp686J1957, FLJ14547, KROX20, KROX-20, Drosophila, homolog (early growth response-2), Krox-20 homolog, OTTHUMP00000062133, early growth response 2 protein

Official Symbol: EGR2

Accession Number(s): NP_000390.2

Human GeneID(s): [1959](#)

Non-Human GeneID(s): 13654 (mouse), 114090 (rat)

Immunogen

Peptide with sequence HGTAGPDRKPFPC, from the internal region of the protein sequence according to NP_000390.2.

Please note the [peptide](#) is available for sale.

Purification and Storage

Purified from goat serum by ammonium sulphate precipitation followed by antigen affinity chromatography using the immunizing peptide.

Supplied at 0.5 mg/ml in Tris saline, 0.02% sodium azide, pH7.3 with 0.5% bovine serum albumin.

Aliquot and store at -20°C. Minimize freezing and thawing.

Applications Tested

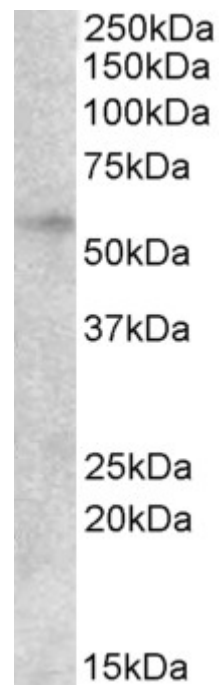
Peptide ELISA: antibody detection limit dilution 1:8000.

Western blot: Approx 55kDa band observed in lysates of cell line HepG2 (calculated MW of 50.3kDa according to NP_000390.2). Recommended concentration: 2-6µg/ml. Primary incubation was 1 hour.

Species Reactivity

Tested: Human

Expected from sequence similarity: Human, Mouse, Rat, Dog



EB07891 (2 μ g/ml) staining of lysates of cell line HepG2 (35 μ g protein in RIPA buffer). Detected by chemiluminescence.