



## UK Office

### Everest Biotech Ltd

Cherwell Innovation Centre  
77 Heyford Park  
Upper Heyford  
Oxfordshire  
OX25 5HD  
UK

Enquiries:

[info@everestbiotech.com](mailto:info@everestbiotech.com)

Sales:

[sales@everestbiotech.com](mailto:sales@everestbiotech.com)

Tech support:

[support@everestbiotech.com](mailto:support@everestbiotech.com)

Tel: +44 (0)1869 238326

[www.everestbiotech.com](http://www.everestbiotech.com)

**Research Use Only. Not for  
diagnostic or therapeutic use.**

## EB06492 - Goat Anti-EHD1 Antibody

Size: 100µg specific antibody in 200µl



### Target Protein

**Principal Names:** EHD1, PAST, PAST1, H-PAST, HPAST1, EH-domain containing 1, testilin, FLJ42622, FLJ44618, OTTHUMP00000069747

**Official Symbol:** EHD1

**Accession Number(s):** NP\_001269373.1; NP\_001269374.1

**Human GeneID(s):** [10938](#)

### Immunogen

Peptide with sequence FSWVSKDARRKKEPC, from the N Terminus of the protein sequence according to NP\_001269373.1; NP\_001269374.1.

Please note the [peptide](#) is available for sale.

### Purification and Storage

Purified from goat serum by ammonium sulphate precipitation followed by antigen affinity chromatography using the immunizing peptide.

Supplied at 0.5 mg/ml in Tris saline, 0.02% sodium azide, pH7.3 with 0.5% bovine serum albumin.

Aliquot and store at -20°C. Minimize freezing and thawing.

### Applications Tested

**Peptide ELISA:** antibody detection limit dilution 1:32000.

**Western blot:** Approx 60kDa band observed in lysates of cell line NIH3T3 (calculated MW of 60.6kDa according to Mouse NP\_0342491) Preliminary testing also showed a band at approx 60kDa in Human Lymph node and Rat Kidney lysate and in HeLa cell lysate. Recommended concentration: 0.03-0.1µg/ml. Primary incubation 1 hour at room temperature.

**IHC:** Paraffin embedded Human Thymus and Brain (Cortex). Recommended concentration: 3.75µg/ml.

**Immunofluorescence:** Strong expression of the protein seen in the membranes and cytoplasm of HeLa and U2OS cells. Recommended concentration: 10µg/ml.

**Flow Cytometry:** Flow cytometric analysis of HeLa cells. Recommended concentration: 10ug/ml.

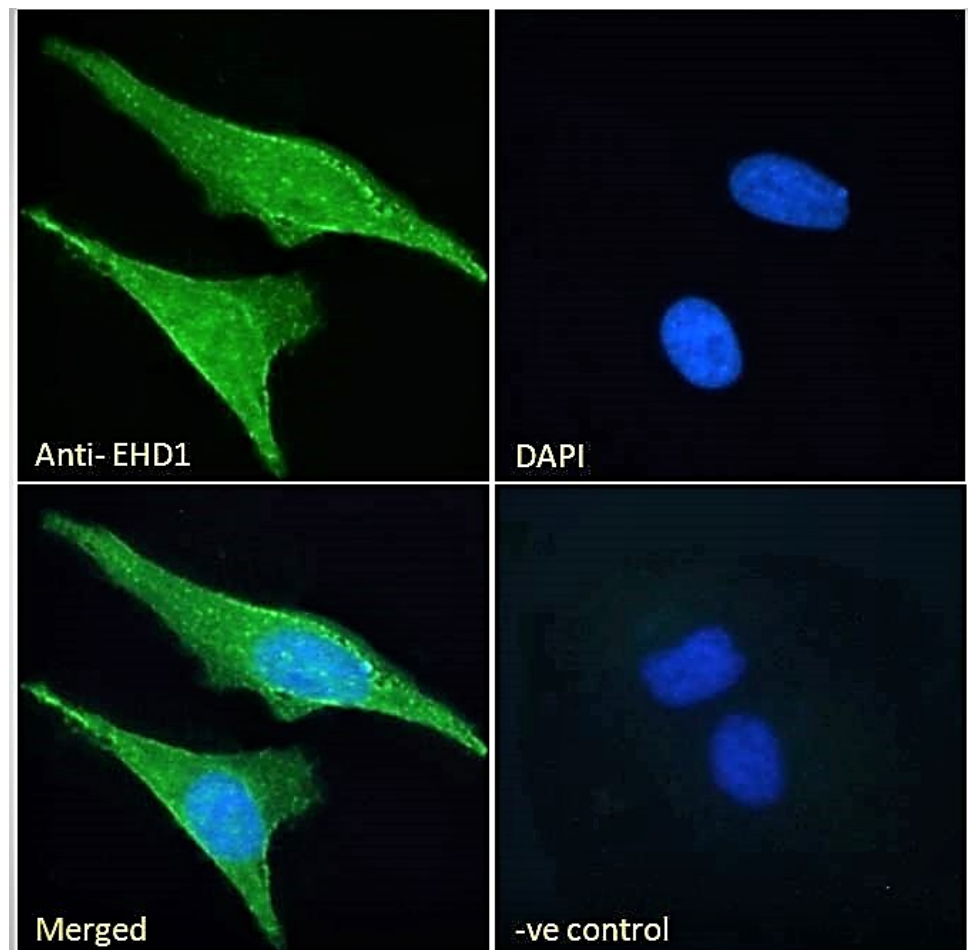
### Species Reactivity

**Tested:** Human, Mouse

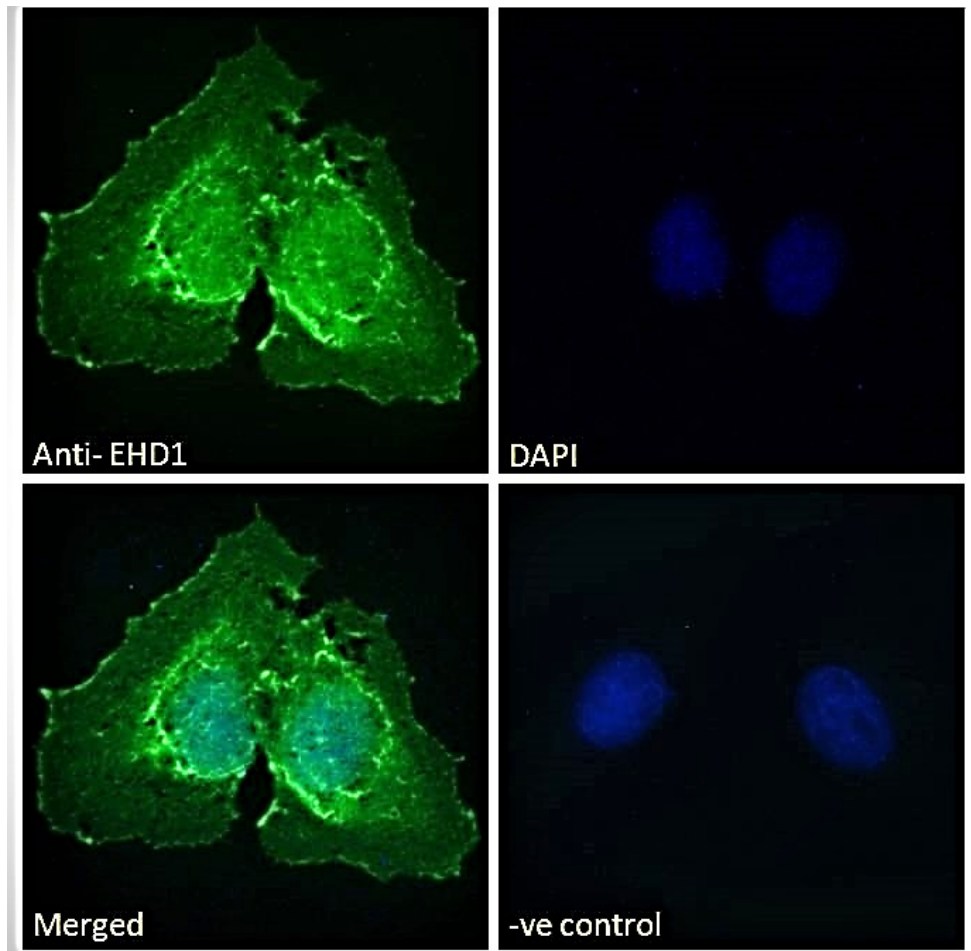
**Expected from sequence similarity:** Human, Mouse, Rat, Cow



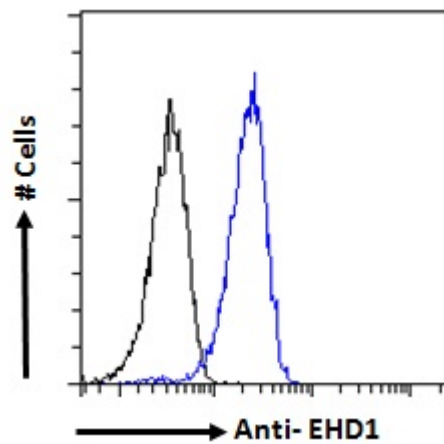
EB06492 (0.1  $\mu\text{g/ml}$ ) staining of NIH3T3 cell lysate (35  $\mu\text{g}$  protein in RIPA buffer). Detected by chemiluminescence.



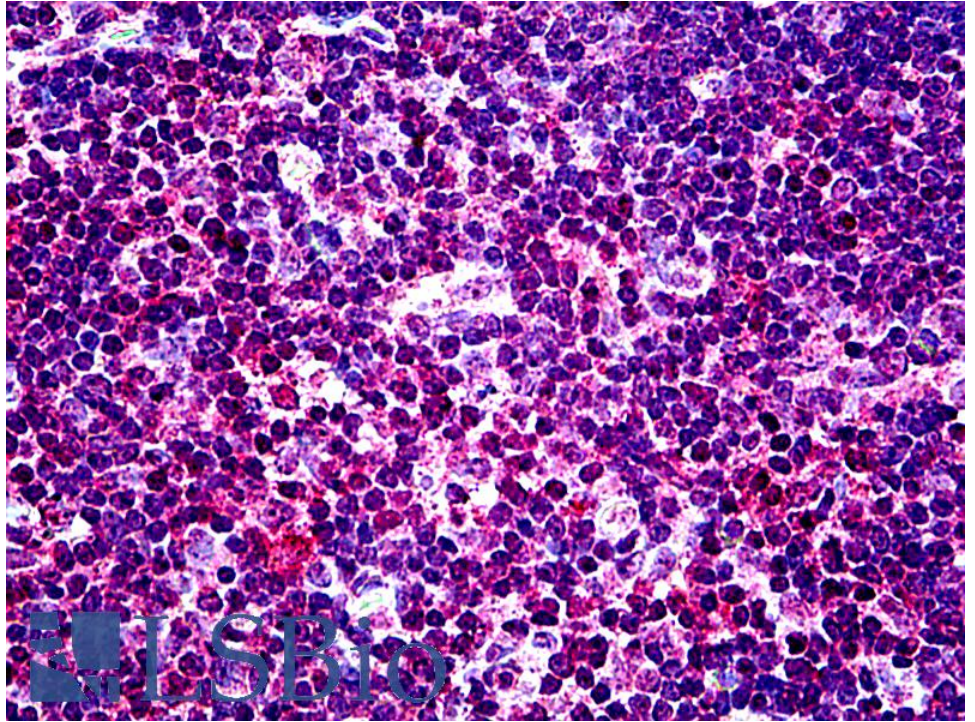
EB06492 Immunofluorescence analysis of paraformaldehyde fixed HeLa cells, permeabilized with 0.15% Triton. Primary incubation 1hr (10  $\mu\text{g/ml}$ ) followed by Alexa Fluor 488 secondary antibody (2  $\mu\text{g/ml}$ ), showing membrane and cytoplasmic staining. The nuclear stain is DAPI (blue). Negative control: Unimmunized goat IgG (10  $\mu\text{g/ml}$ ) followed by Alexa Fluor 488 secondary antibody (2  $\mu\text{g/ml}$ ).



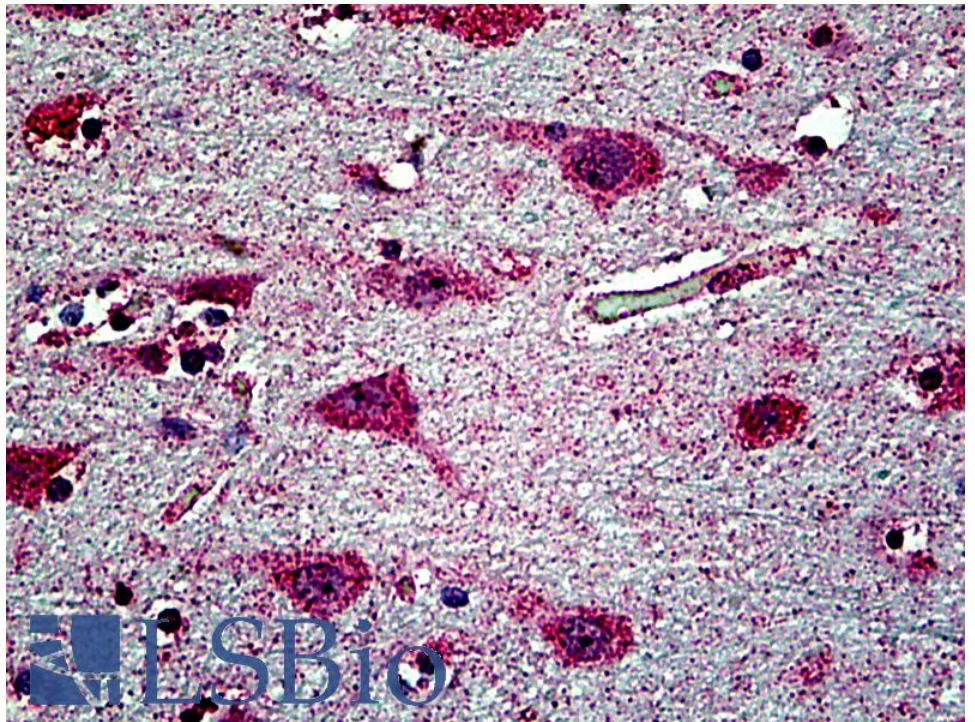
EB06492 Immunofluorescence analysis of paraformaldehyde fixed U2OS cells, permeabilized with 0.15% Triton. Primary incubation 1hr (10ug/ml) followed by Alexa Fluor 488 secondary antibody (2ug/ml), showing membrane, nuclear and cytoplasmic staining. The nuclear stain is DAPI (blue). Negative control: Unimmunized goat IgG (10ug/ml) followed by Alexa Fluor 488 secondary antibody (2ug/ml).



EB06492 Flow cytometric analysis of paraformaldehyde fixed HeLa cells (blue line), permeabilized with 0.5% Triton. Primary incubation 1hr (10ug/ml) followed by Alexa Fluor 488 secondary antibody (1ug/ml). IgG control: Unimmunized goat IgG (black line) followed by Alexa Fluor 488 secondary antibody.



EB06492 (3.75µg/ml) staining of paraffin embedded Human Thymus. Steamed antigen retrieval with citrate buffer pH 6, AP-staining.



EB06492 (3.75µg/ml) staining of paraffin embedded Human Cortex. Steamed antigen retrieval with citrate buffer pH 6, AP-staining.